



Railway Cottage, Approach Road, Taplow, Maidenhead, Berkshire, SL6 0NP

Asking Price | £2,300

Property Features

- Semi Detached
- Three Bedrooms
- Large Kitchen/Breakfast Room
- Private Garden
- Well Presented
- Parking for several vehicles
- Walking distance of the train station
- Flexible Furnishing
- Available Now

Full Description

A delightful three bedroom semi detached family home which is perfectly situated for commuters and those seeking a blend of modern living and convenience.

The property has two reception plus a large kitchen/breakfast room with a separate utility area. To the first floor there's three bedrooms and a modern bathroom.

Outsides there's a private garden with a terrace area and lawn. To the front there's a long driveway with parking available for several vehicles.

The property is within walking distance of Taplow train station and local amenities.

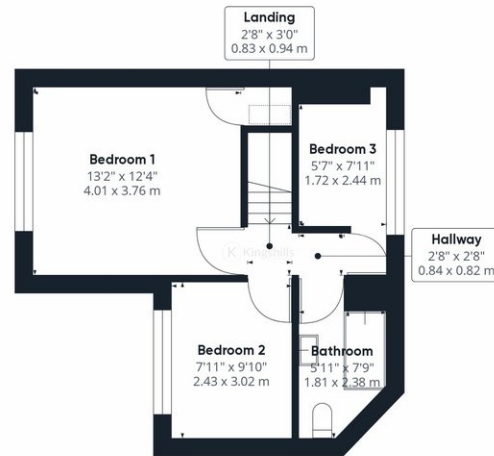
Available Now on a flexible furnishing basis.







Ground Floor



Floor 1

Approximate total area⁽¹⁾

1010.83 ft²
93.91 m²

Reduced headroom

5.43 ft²
0.5 m²

(1) Excluding balconies and terraces

 Reduced headroom
(below 1.5m/4.92ft)

While every attempt has been made to ensure accuracy, all measurements are approximate, not to scale. This floor plan is for illustrative purposes only.

GIRAFFE360