



29 Combe Rise, High Wycombe, Buckinghamshire, HP12 4JE

Asking Price | £435,000

Property Features

- Spacious Semi Detached Home
- Great Order Throughout
- Landscaped tiered garden.
- 3 Good sized Bedrooms
- Living/Dining Room flooded with natural light
- Modern Kitchen
- Shower room and bathroom
- Garage with driveway parking
- Double Glazing
- Gas Radiator Heating

Full Description

Welcome to this spacious semi-detached house located in sought-after cul-de-sac to the west of High Wycombe, this delightful property offers an ideal blend of modern comfort and classic elegance, perfect for families or professionals seeking a tranquil yet convenient lifestyle.

Each bedroom is generously sized, providing ample space for rest and relaxation. The main bedroom and 3rd bedroom are situated on the ground floor and feature large windows that flood the room with natural light, creating a bright and airy atmosphere. There is also a shower room on the same floor servicing both bedrooms.

On the first floor the property includes a large living/dining room with multi fuel burner perfect for family gatherings, and a separate dining area that flows seamlessly into the modern kitchen. The kitchen is fully equipped with contemporary appliances and plenty of storage space, ideal for culinary enthusiasts. The 2nd double double bedroom and modern family bathroom are also located on this floor.

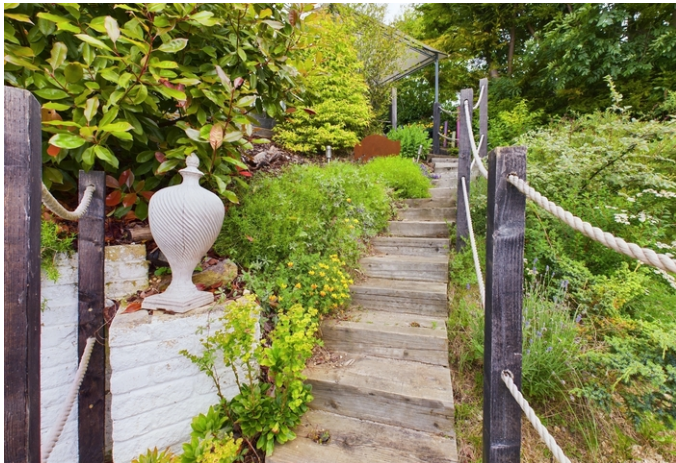
Garage and Driveway Parking: Benefit from the convenience of a private garage, providing secure storage or parking space, along with additional driveway parking for multiple vehicles.

The house is surrounded by meticulously maintained gardens featuring various seating areas. Each area offers a unique aspect, whether it's a sunny spot for morning coffee or a shaded nook for afternoon relaxation.

There is the added benefit of a dedicated home gym. This versatile space can be tailored to suit your needs whether it be a gym, office or simply for storage.

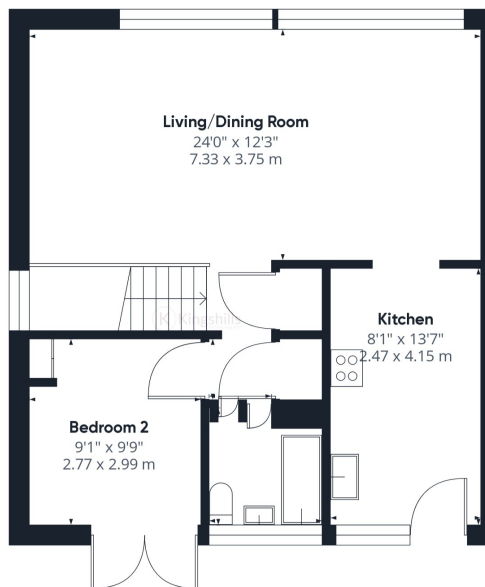
Situated in a peaceful neighborhood, this home is within easy reach of local amenities, schools, and transport links, ensuring convenience for daily commutes and weekend activities.



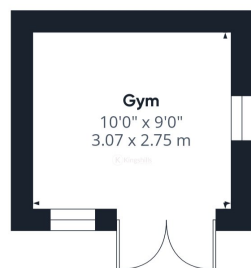




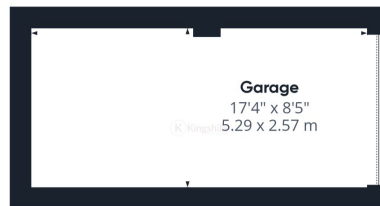
Ground Floor Building 1



Floor 1 Building 1



Ground Floor Building 2



Ground Floor Building 3

Approximate total area⁽¹⁾
1206.18 ft²
112.06 m²

(1) Excluding balconies and terraces

While every attempt has been made to ensure accuracy, all measurements are approximate, not to scale. This floor plan is for illustrative purposes only.

GIRAFFE360