



Property Features

- Shared Ownership - price indicates a 50% share.
- Two Bedroom Duplex Apartment - arranged over 2 floors
- Light & Bright Apartment with plenty of natural light
- Contemporary Kitchen with Integrated
- Converted Historic Victorian Building
- Prime Central Location in High Wycombe town centre
- Walking Distance to the Train Station
- Underground Allocated Parking Set within Secure Gates

Full Description

Flat 77 is an industrial style 2 bed duplex apartment - arranged over two floors. As you enter the apartment into the hallway, you will find a well-appointed main bathroom - complete with tiled walls, white sanitaryware and a shower over bath. The hallway enjoys a storage cupboard - where the washer/dryer is housed. The open plan kitchen/living room is of good size, with defined areas for eating and relaxing. Upstairs you will find 2 double bedrooms - ideal for a couple wanting some extra space or a study - or for a family looking to take a step onto the housing ladder.

Enjoying a prime location that perfectly complements urban living, The Old Works is situated within walking distance of High Wycombe's vibrant town centre where residents can easily access a plethora of shops, bars, and restaurants. Whether you crave a leisurely stroll, a shopping spree, or a night out on the town, everything you desire is right at your doorstep.

Shared Ownership:

The Old Works apartments are offered for sale on a Shared Ownership basis. This is a fantastic opportunity to take your first step on the property ladder. See brief overview of costs below:

50% Shared Ownership Price £149,999.50 (full price £299,999)

Rent on The Remaining 50% Share £344 per month

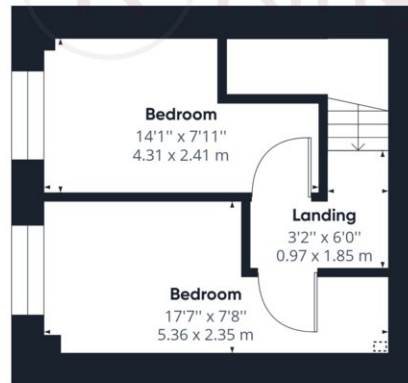
Service Charge £1,317 per annum Lease: 250 years







Ground Floor



Floor 1



Kingshills Estate Agents
 Comet Studios
 Amersham
 Buckinghamshire
 HP7 0PX

01494 939868
 hello@kingshills.co.uk
 kingshills.co.uk

Agents Note: Whilst every care has been taken to prepare these particulars, they are for guidance purposes only. All measurements are for general guidance purposes only and whilst every care has been taken to ensure accuracy, they should not be relied upon and potential buyers/tenants are advised to recheck the measurements