



1 Leo Crescent, Princes Risborough, Buckinghamshire, HP27 9FR

Asking Price | £550,000

Property Features

- Modern Semi-Detached Home
- Convenient access to the high street
- Well presented throughout
- 3 Good Sized Bedrooms
- 2 Bathrooms
- Private balcony
- Open Plan Kitchen/Dining/Living
- Landscaped Gardens
- Driveway Parking and Garage
- EPC: B

Full Description

Welcome to Leo Crescent, a spacious semi-detached home available in the coveted Kite Meadows development, Princes Risborough. Don't miss this opportunity to own a modern residence in a prime location. With 3 good sized bedrooms and 2 bathrooms, this house is not to be missed.

As you step into this property, you are greeted by a light and airy entrance hall that sets the tone for the entire home. The open plan Living/Dining/Kitchen/Breakfast Room is a spacious and versatile area. The well-appointed kitchen boasts modern appliances, including an Oven, Hob, Fridge, Freezer, Washing Machine, and Dishwasher, complemented by sleek worktops and under cupboard lighting. There is also a cloakroom on this floor for convenience.

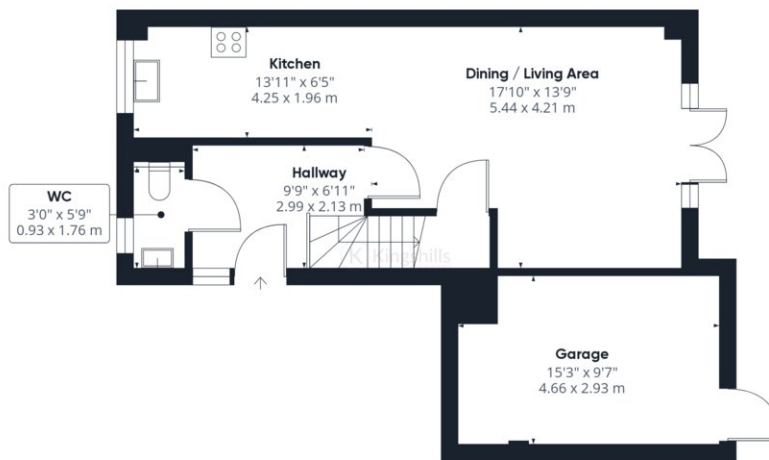
The first floor is dedicated to two generous bedrooms, with bedroom 2 offering the luxury of a Juliet balcony. These bedrooms share access to a modern family bathroom. Ascending to the second floor, you'll discover the principal bedroom, complete with a contemporary ensuite shower room and a balcony, providing a private retreat.

Outside, the landscaped gardens at the rear of the property offer a delightful space for relaxation, featuring decking and seating areas. The front of the property boasts a convenient driveway leading to a large single garage which is currently utilized as a gym/study. There is ample driveway parking and storage space.

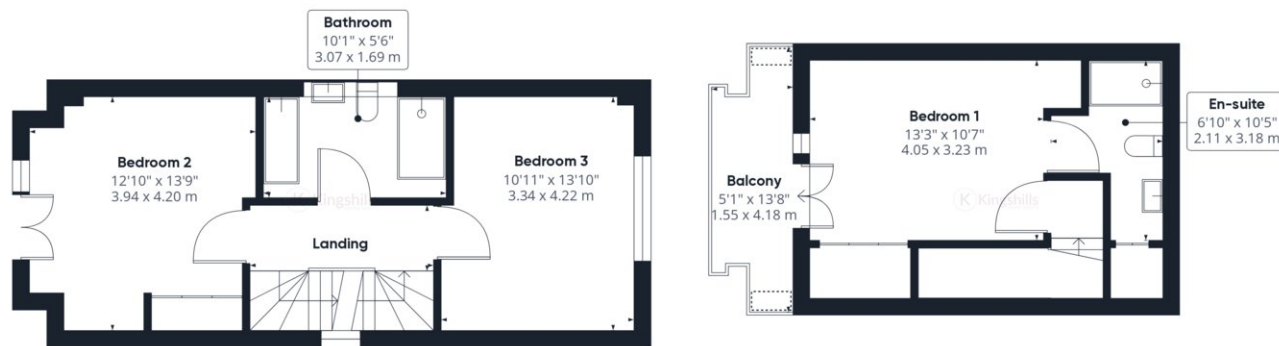
Education is a key highlight of this location, with reputable schools in close proximity, providing excellent options for families. Princes Risborough town center and train station are also just a stone's throw away, offering convenient access to local amenities and easy commuting options. Enjoy the perfect blend of modern living and accessibility at Leo Crescent.







Ground Floor



Floor 1

Floor 2

Approximate total area⁽¹⁾
1258.12 ft²
116.88 m²

(1) Excluding balconies and terraces

While every attempt has been made to ensure accuracy, all measurements are approximate, not to scale. This floor plan is for illustrative purposes only.

GIRAFFE360