



Property Description

Welcome to this charming ground floor maisonette located in High Wycombe, Buckinghamshire. This delightful property offers a comfortable and convenient lifestyle, perfect for first-time buyers, investors or those looking to downsize.

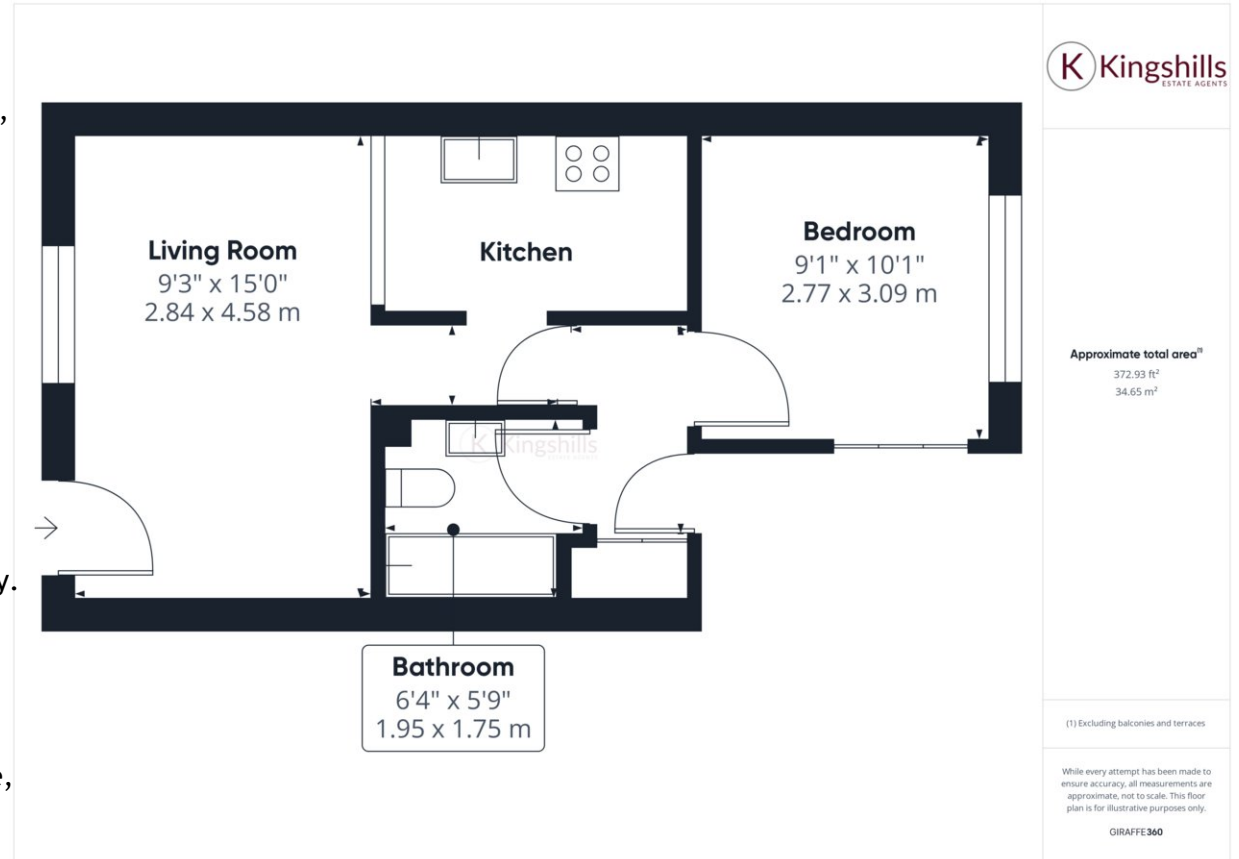
As you enter, you're greeted by a cozy living space with plenty of natural light, creating a bright and airy atmosphere. The interior features neutral tones, providing a versatile canvas for personalization.

The well-appointed kitchen has modern appliances and ample storage, making meal preparation a breeze.

The property comprises one generously sized bedroom with large built in wardrobe, offering a peaceful retreat at the end of the day. With ample space for a good sized bed and additional furnishings, you'll have no trouble creating a tranquil haven to unwind in. Adjacent to the bedroom is the bathroom.

One of the standout features of this maisonette is its healthy lease, providing peace of mind for years to come. Additionally, allocated parking ensures convenient access to your vehicle at all times.

Situated close to Desborough Park, residents can enjoy leisurely strolls, or recreational activities in this open green space. With its convenient location, this property presents a fantastic opportunity to embrace the vibrant lifestyle High Wycombe has to offer.



Kingshills Estate Agents
Comet Studios
Amersham
Buckinghamshire
HP7 0PX

01494 939868
hello@kingshills.co.uk
kingshills.co.uk

Agents Note: Whilst every care has been taken to prepare these particulars, they are for guidance purposes only. All measurements are for general guidance purposes only and whilst every care has been taken to ensure accuracy, they should not be relied upon and potential buyers/tenants are advised to recheck the measurements