



Mill Brook Cottage, Lower Icknield Way, Longwick, Princes Risborough,
Duckinhampton HP27 6GA

Asking Price | £795,000

Property Features

- Brick and Flint Detached Cottage
- Plot of approximately 2/3 of an Acre.
- Potential for Further Expansion (STPP)
- 3/4 Bedrooms
- 2/3 Receptions
- Stream running close to the property
- Good commuting to London
- Great School Catchment
- EPC 34 F / Council Tax Band F

Full Description

Nestled in the picturesque village of Longwick, just a short distance away from Princes Risborough in Buckinghamshire, Mill Brook Cottage sits on a plot of approximately 2/3 of an acre.

The detached cottage is constructed with a beautiful combination of brick and flint. With 3/4 bedrooms and 2/3 reception rooms, it presents an exciting opportunity for potential expansion (STPP).

Main House:

As you approach Mill Brook Cottage, you are greeted by the warm and inviting brick and flint facade. The interior provides a blend of traditional features and contemporary updates. The spacious reception rooms offer flexibility for various living arrangements, from a cozy family room to an elegant dining area.

Bedrooms:

The main house features 3/4 bedrooms, with bedroom 4 located on the ground floor and doubling up as a family room, each bedroom exuding its own unique character. The bedrooms provide the perfect retreat for rest and relaxation.

Bathrooms:

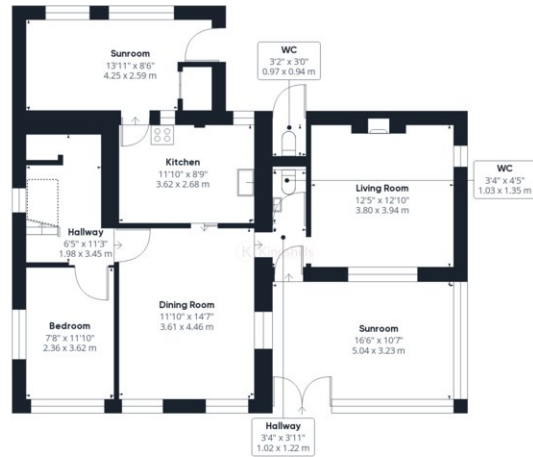
The family bathroom is located on the first floor with a cloakroom located on the ground floor and a 'Gardeners Toilet' located on the outside behind the kitchen.

Cabin:

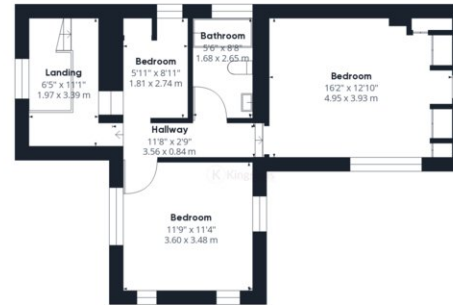
The log cabin on the property is a true gem, perfect for a range of uses. There is a studio and gym providing a versatile space.







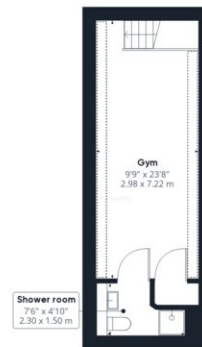
Ground Floor Building 1



Floor 1 Building 1



Ground Floor Building 2



Floor 1 Building 2

Approximate total area⁽¹⁾

2389.43 ft²
221.99 m²

Reduced headroom

54.77 ft²
5.09 m²

(1) Excluding balconies and terraces

Reduced headroom
(below 1.5m/4.92ft)

While every attempt has been made to ensure accuracy, all measurements are approximate, not to scale. This floor plan is for illustrative purposes only.

GIRAFFE360