



13 Payton Gardens, Cookham, Berkshire, SL6 9FF

Asking Price | £695,000

## Property Features

---

- Stylish Semi Detached Home
- No Onward Chain
- 3 Bedrooms
- Principal with en suite
- Contemporary Kitchen with AEG appliances
- Lounge/Dining Room with Patio Doors to Garden
- Driveway Parking
- Walking Distance of Town Centre & Train Station
- Close to Countryside Walks
- EPC 85 B / Council Tax Band D

## Full Description

---

Nestled in the picturesque village of Cookham, Berkshire, this exquisite semi-detached house offers a perfect blend of contemporary style and functional design. Built in 2016 by the renowned Shanly Homes, this three-storey residence was once a show home, showcasing the epitome of modern living.

The ground floor is home to a generously sized lounge/dining room, adorned with natural light and enhanced by French doors that seamlessly connect the indoor and outdoor spaces. This creates an inviting atmosphere and provides easy access to the well-maintained garden. The heart of the home is a stylish and fully-equipped kitchen with integrated AEG appliances, sleek cabinetry, and ample counter space which make this kitchen the perfect space for culinary enthusiasts. A downstairs WC adds to the overall functionality of the home.

This charming property boasts three bedrooms, including a principal bedroom with its own en-suite bathroom, providing a luxurious and private retreat. In addition to the en-suite, residents can enjoy the convenience of a well-appointed family bathroom. All bathrooms are fitted with tasteful Villeroy & Boch sanitary ware .

Access to the rear garden is via the French doors in the living room, creating an extension of the living space, offering a tranquil outdoor retreat for relaxation, al fresco dining, or entertaining guests. There is parking for 3 cars.

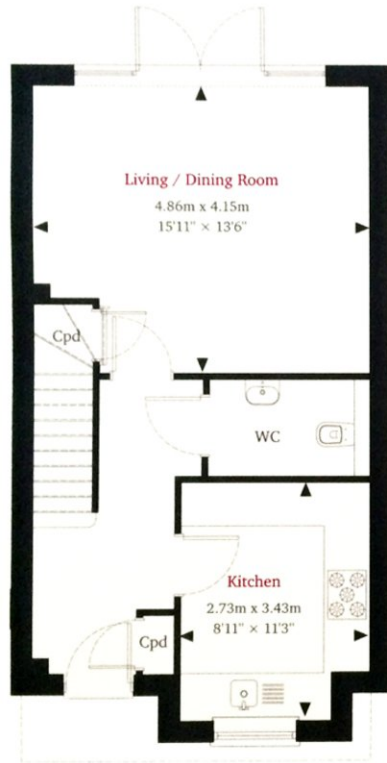
Please note that the property is currently tenanted and the photographs shown were taken prior to this tenancy.

In summary, this semi-detached house in Cookham, not only presents an elegant and comfortable living space but also provides an opportunity for a vibrant village lifestyle, where history, culture, and modern convenience seamlessly converge. Don't miss the opportunity to make this stylish residence your new home in the heart of Cookham.

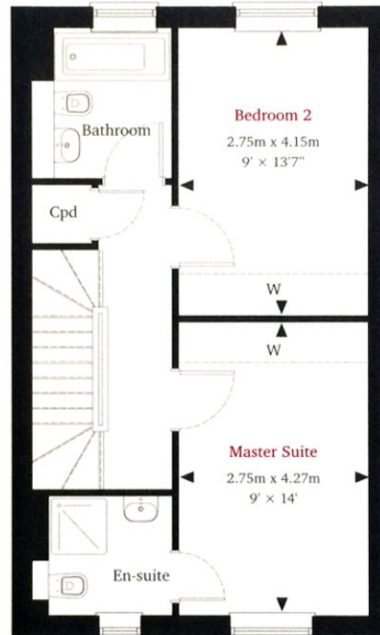




Ground Floor



First Floor



Second Floor



◀ Point from which maximum dimensions are measured. Dimensions are intended for guidance only and may vary by plus or minus 7.6cm/3". The plots indicate general layout only which may vary slightly. Floorplan scale may vary from other plots.  
W denotes wardrobe, Cpd denotes cupboard. Please consult sales adviser for more information.