



Selbon

Residential sales & lettings

Harvey Road, Farnborough,
Hampshire, GU14 9TW
Offers over £375,000 Freehold

 3  1  2  D

01252 979300
Selbonproperty.co.uk

- Three Bedroom Semi-Detached Family Home
- Bay Fronted, Front Aspect Living Room
- South-Westerly Aspect Rear Garden
- Gas Central Heating And Double Glazing
- Short Drive To Farnborough Town Centre And Train Station
- Open Plan Kitchen/Dining Room
- Bonus Loft Room, Ideal For A Study
- Outbuilding In A Block (Formally A Garage) With Garden Access
- Close To Well Regarded Schools
- Close To Amenities

Selbon Estate Agents are delighted to welcome to the market this three bedroom semi-detached family home.

The current school catchment for the area includes: Cove Infant School, Parsonage Farm Infant School, Guillemont Junior School, Cove Junior School and Cove Secondary School.

On approach, the property offers a laid to lawn front garden with a flowerbed meeting the start of the home. Stepping inside, the hallway gives access to a spacious front aspect, bay fronted living room and a semi-tiled four piece bathroom suite with a walk in glass panelled corner shower cubicle, WC, wash basin, heated towel rail, extractor fan and a bathtub with hand shower. The downstairs accommodation also includes an extended, open plan kitchen dining room, with dual aspect windows, a range of base level and wall mounted storage cupboards, a built in oven with grill, gas four burner hob and extractor fan and a dishwasher.

Upstairs there are three well sized bedrooms, with bedroom one and two benefitting from fitted wardrobes. From the landing there is also a study area, airing cupboard, and a padded staircase to a bonus loft room, ideal for an additional study.

The south-westerly facing rear garden is mainly laid to lawn with a patio area meeting the home, with a pathway leading through to the end of the garden, which gives rear access into an outbuilding (formally a garage) which benefits from lighting and power.

We are advised that the property suffered subsidence in the 1980's and that the home has been underpinned in 1985 to rectify the issue.





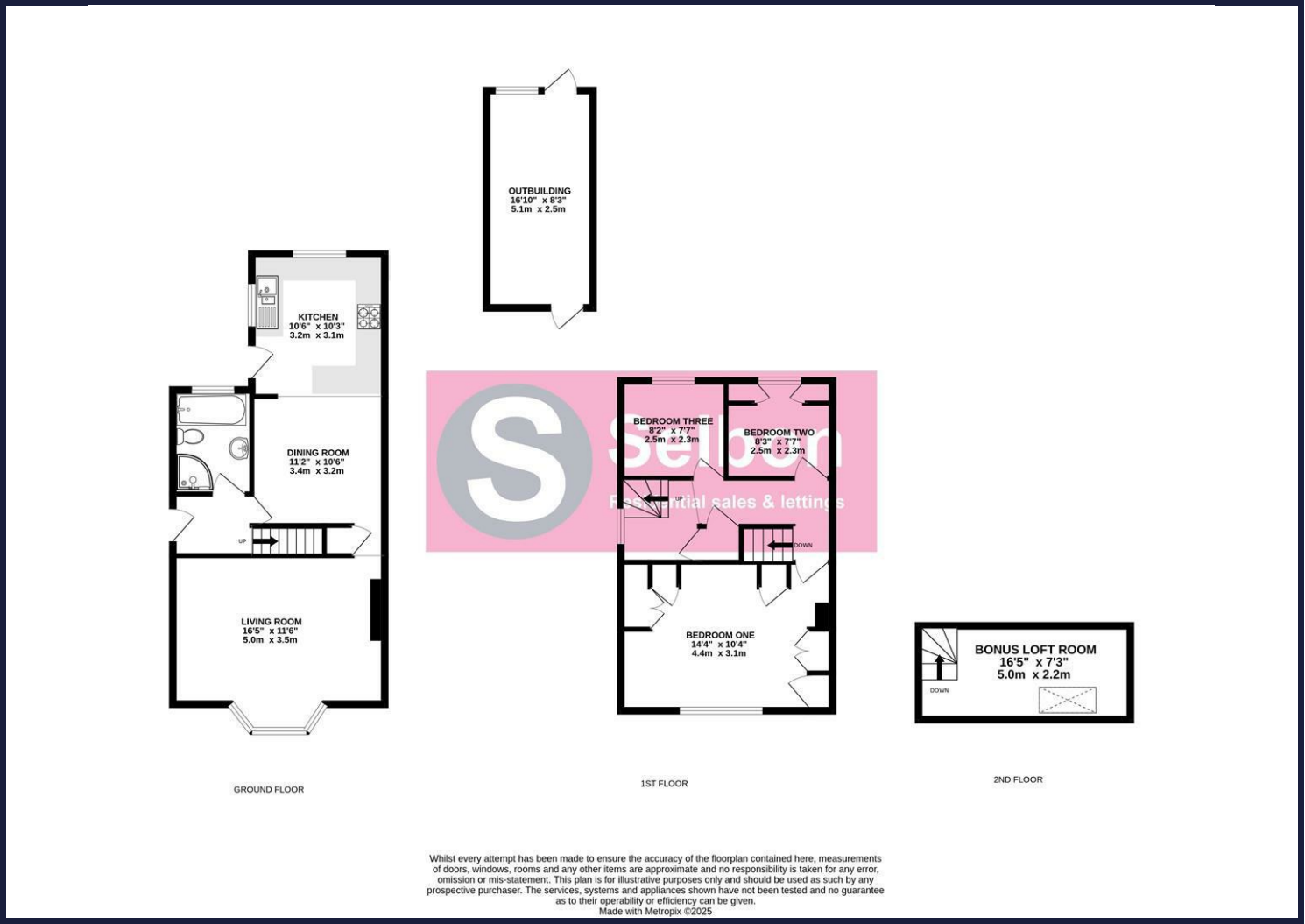




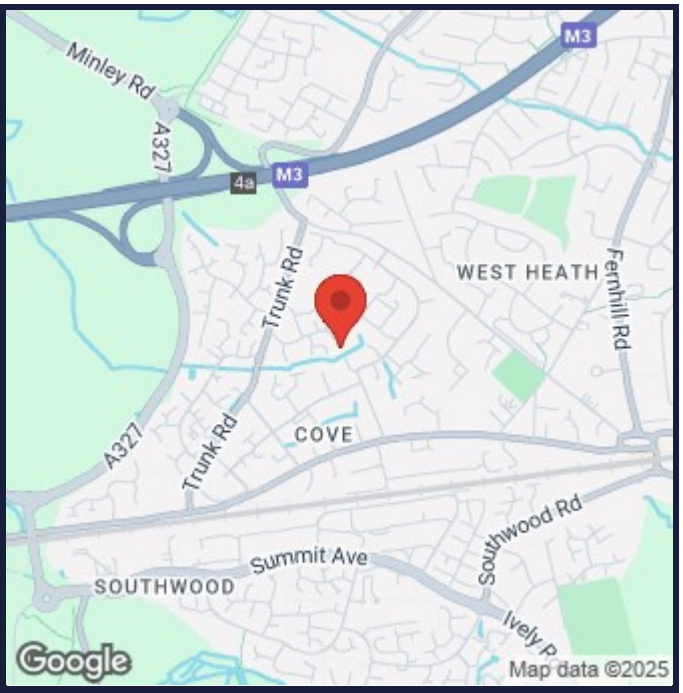




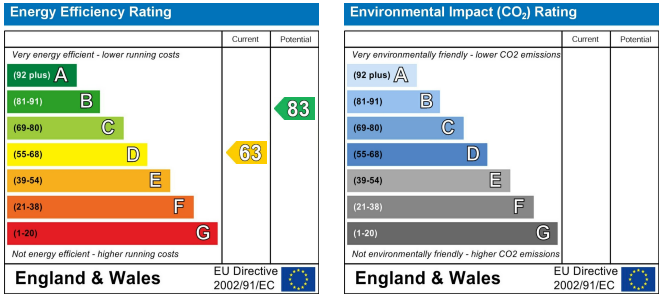
Floor Plans



Area Map



Energy Performance Graph



Viewing

For further information on this property or to arrange a viewing please contact Selbon Estate Agents on 01252 979300

We give notice that these particulars are produced in good faith and in accordance with the Consumer Protection from Unfair Trading Regulations 2008 (CPR). They are set out as a general guide only and do not constitute any part of a contract or warranty whatsoever. Intending purchasers should not rely on them as statements of representation of fact, but must satisfy themselves by inspection or otherwise as to their accuracy. No person in the employment of Selbon has any authority to make or give any representation or warranty whatever in relation to the property. A detailed survey has not been carried out nor have the services, heating systems, appliances or specific fittings been tested. Any photograph incorporated within these particulars shows only certain parts of the property and it must not be assumed that any contents or fixtures and fittings shown in the photographs are either included with the property or indeed remain in it. Room sizes shown and any floor plans should not be relied upon for carpets and furnishings. If there is any point which is of particular importance to you we will be pleased to check the information for you and confirm that the property remains available. This is particularly important if you are contemplating travelling some distance to view the property.

Council Tax Band: C