



Selbon

Residential sales & lettings

Lilyville Road, Fulham,
London, SW6 5DP

Guide price £2,250,000 Freehold



01252 979300

Selbonproperty.co.uk

- Substantial Semi Detached Home
- 2 Receptions Room & Kitchen (Ground Floor)
- 3 Bedrooms, Kitchen/Bedroom, Shower Room & WC (1st Floor)
- Gas Radiator Heating & Wooden Sash Windows
- Opportunity For Modernising & Remodeling
- Versatile Living Accomodation Over 3 Floors
- Rear Lobby/Shower Room & WC (Ground Floor)
- 2 Bedrooms & Eaves Storage (2nd Floor)
- Enclosed Courtyard Style Garden
- Scope To Extend (STPP), Including Potential Basement Development

Selbon Estate Agents are delighted to offer this substantial semi detached family home to the market with circa 2139 sq ft versatile living accommodation, set over 3 floors, situated on this highly desirable street, off the Fulham Road.

Having been in the same family since the late 1800's, this wonderful home is coming to the market for the first time. Offering an exciting opportunity to modernise and remodel the existing home as well as having the potential for extension, including a basement development. The property is ideal for an investment buyer or a family looking to design the perfect family home.

Accessed via the courtyard style front garden, the front door leads to the entrance hall with stairs to the first floor landing and doors to the bay fronted lounge, dining room with double doors to the rear garden, the kitchen as well as a door leading to steps to the basement.

The ground floor accommodation is complimented by a rear lobby/shower room with doors to a separate WC and the rear garden.

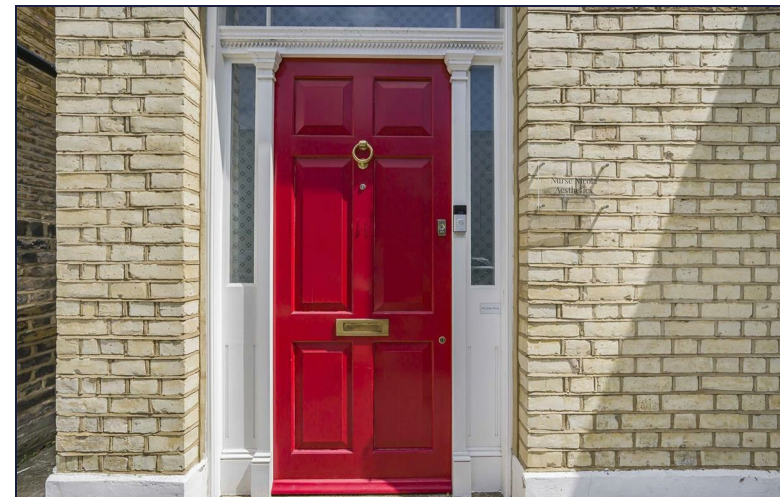
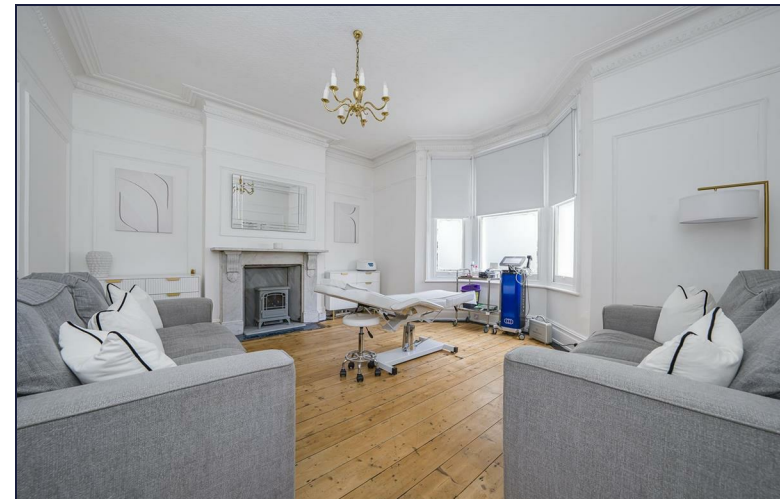
The first floor landing has doors to 3 bedrooms, a kitchen/bedroom, shower room, separate WC and stairs to the second floor landing, which in turn has 2 bedrooms.

Further benefits include, gas radiator heating, sash windows, a court yard style rear garden, there is on street parking subject to parking restrictions (Ringo Parking App). We are advised that you can apply for residents and visitor parking permits.

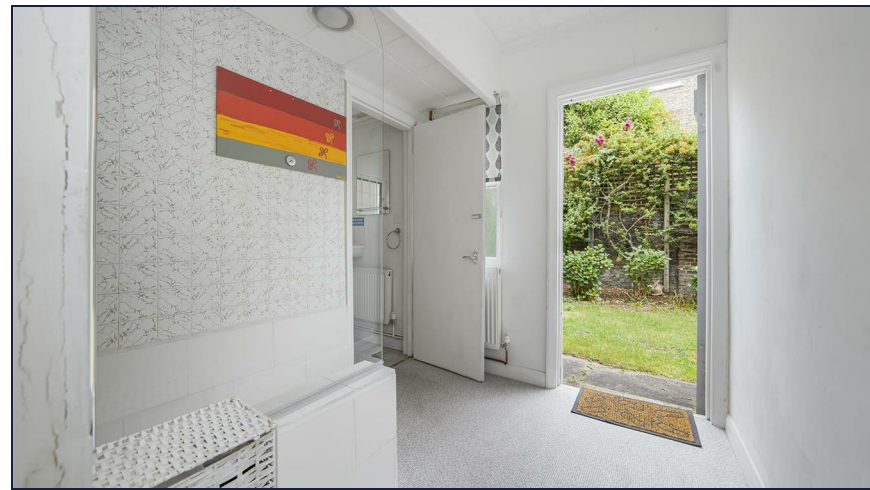
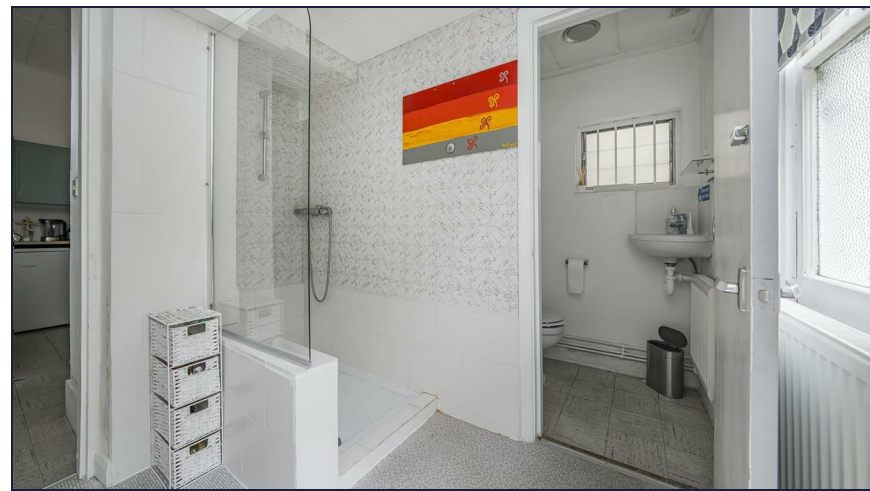
Lilyville Road is located off the Fulham Road, offering convenient access to a variety of local shops, cafes, restaurants and Fulham Broadway. The scenic Bishops Park, with its lush green spaces and riverside walks, are within close proximity with Chelsea's football ground Stamford Bridge, a short distance away.

There is convenient road links into the City, as well as underground stations at Parsons Green and Putney Bridge both served by the District Line.

The home is offered with no onward chain and a viewing is highly recommended.







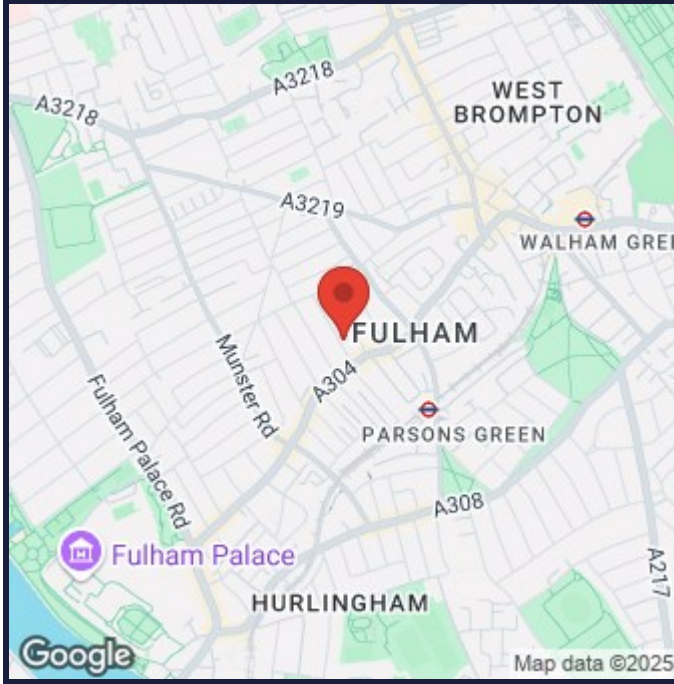
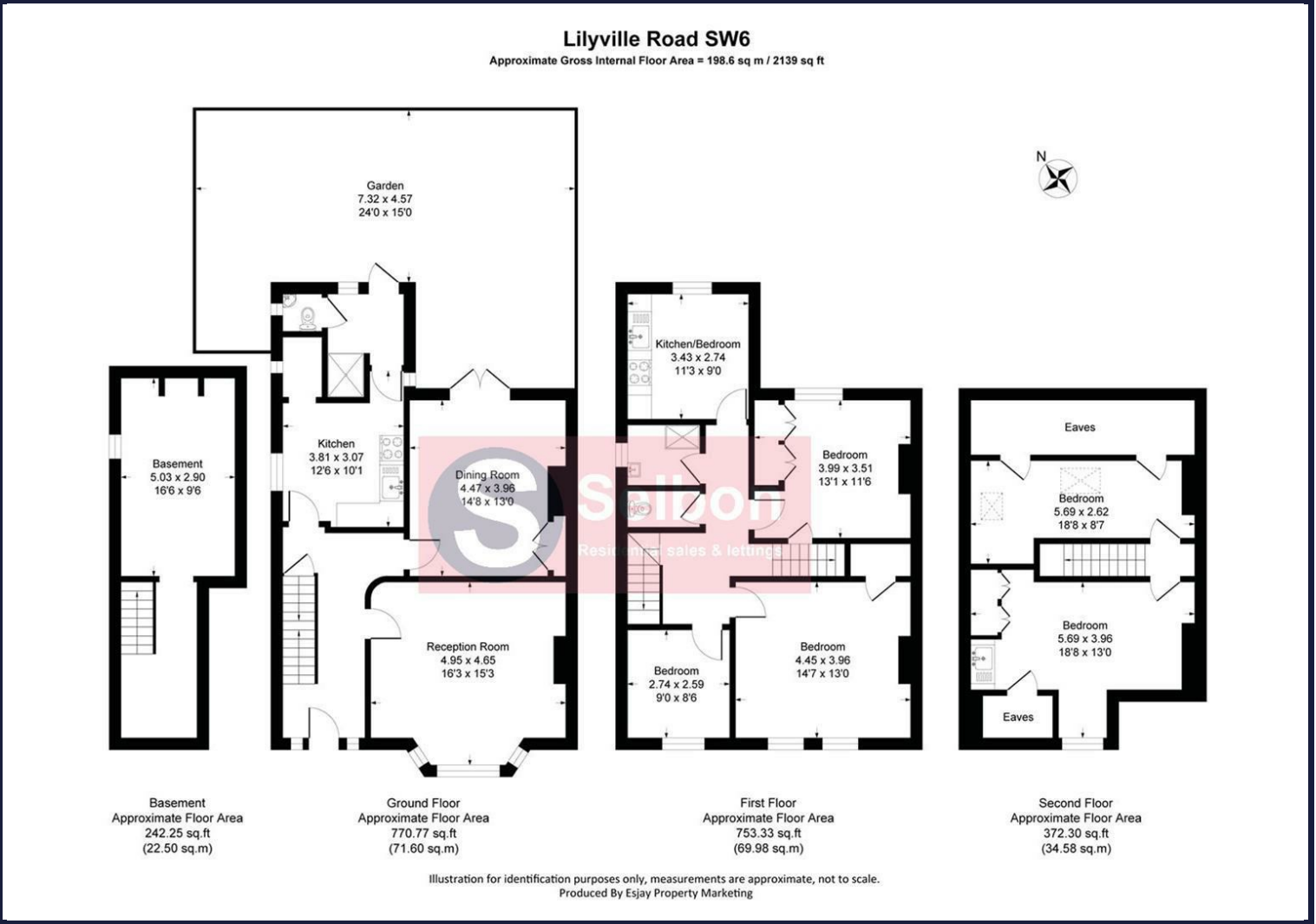




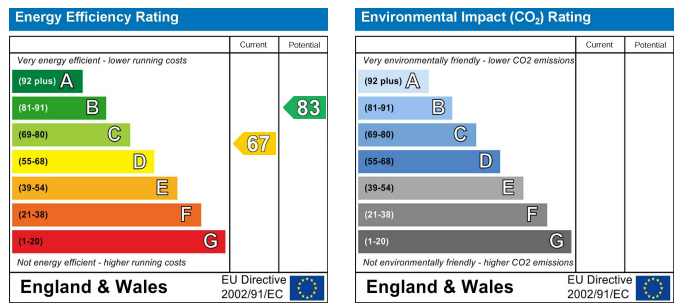








Energy Performance Graph



Viewing

For further information on this property or to arrange a viewing please contact Selbon Estate Agents on 01252 979300

Council Tax Band: H

We give notice that these particulars are produced in good faith and in accordance with the Consumer Protection from Unfair Trading Regulations 2008 (CPR). They are set out as a general guide only and do not constitute any part of a contract or warranty whatsoever. Intending purchasers should not rely on them as statements of representation of fact, but must satisfy themselves by inspection or otherwise as to their accuracy. No person in the employment of Selbon has any authority to make or give any representation or warranty whatever in relation to the property. A detailed survey has not been carried out nor have the services, heating systems, appliances or specific fittings been tested. Any photograph incorporated within these particulars shows only certain parts of the property and it must not be assumed that any contents or fixtures and fittings shown in the photographs are either included with the property or indeed remain in it. Room sizes shown and any floor plans should not be relied upon for carpets and furnishings. If there is any point which is of particular importance to you we will be pleased to check the information for you and confirm that the property remains available. This is particularly important if you are contemplating travelling some distance to view the property.