



Eriswell Drive

Lakenheath, IP27

Offers over £220,000

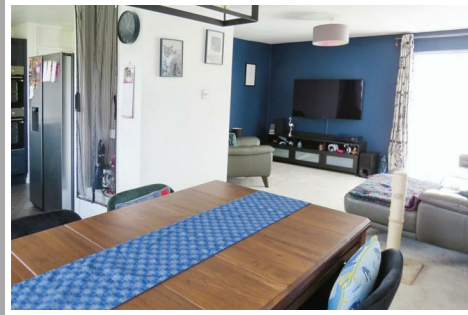
 2  1  1  D



Eriswell Drive

Lakenheath, IP27

Offers over £220,000



Description

This superb link-detached home benefits from a spacious open plan design and enjoys pleasant COUNTRYSIDE VIEWS across open fields to the rear. The property has been improved by the current sellers and includes a newly fitted kitchen, new carpets, new windows and new French doors as well as app controlled Rointe electric wall radiators.

Downstairs the house includes a welcoming entrance hall with ample space to remove coats and shoes, understairs storage cupboard housing an updated fuse board and a generous sized storage cupboard. There is an impressive open plan lounge/ dining room with French doors that open into the rear garden and a fully fitted kitchen which offers a range of wall and base level units, stainless steel sink and drainer, two useful pantry storage cupboards, Samsung double oven and induction hob, integrated dishwasher as well as space for an American style fridge freezer. The property also benefits from a separate UTILITY ROOM which includes a butler sink, additional space for appliances and a door leading outside.

Stairs lead to a bright and airy first floor landing with a useful storage cupboard, an airing cupboard housing the hot water cylinder as well as a loft access hatch. There are two double bedrooms, the larger of which overlooks open fields, whilst both benefit from BUILT IN WARDROBES. The internal accommodation is concluded by a FAMILY BATHROOM which comprises W.C, wash hand basin, bath with shower over and heated towel rail.

Outside the property includes a double length driveway which provides ample off street parking for two cars. There is a brick built storage cupboard to the front of the property and a side access gate which leads into the fully enclosed rear garden. The rear garden has been laid to lawn for ease of maintenance and includes a small concrete patio for seating/ entertaining.

Measurements

Lounge - 14'10" x 10'10"

Dining Area - 10'03" x 8'11"

Kitchen - 12'01" x 9'09"

Utility Room - 7'11" x 7'05"

Bedroom - 15'01" x 9'03"

Bedroom - 12'02" x 9'09"

Family Bathroom - 6'10" x 5'11"

Agents Note

Council Tax Band - West Suffolk, A.

Molyneux Estate Agents has not tested any fixtures and fittings, services or appliances in this property and cannot guarantee that they are in working order.

Whilst we intend to make our particulars as accurate as possible, measurements and statements are provided as a general guidance, they are not factual and should not be relied upon. Before ordering any carpets or built in furniture please contact the agent to verify any specific measurements.

Floor plans are not to scale. They are provided for indication purposes and their accuracy should not be relied upon.

Items shown in photographs are not included unless they are detailed within the sales particulars. They may be available by separate negotiation. Please contact the agent with regards to this.

The Buyer is advised to obtain verification of the tenure from their Solicitor. The agent has not reviewed the title documents for this property.

Tel: 01842 818282

