



Wheatfield Court, Hare Way, St. Leonards-On-Sea,
£1,275 Per Calendar Month



Oliver & Bailey

01424 834000 | 01424 533 555

Info@oliverbaileylettings.co.uk
www.oliverbaileylettings.co.uk

Entrance hallway

Living Room

14'2" x 11'8" (4.34m x 3.58m)

Kitchen

9'8" x 7'4" (2.95m x 2.26m)

Landing

Bedroom

12'2" x 8'7" (3.71m x 2.64m)

Bedroom

12'2" x 8'3" (3.71m x 2.54m)

Bathroom

Rear garden



Furnished Options: Unfurnished

Council Tax Band: B

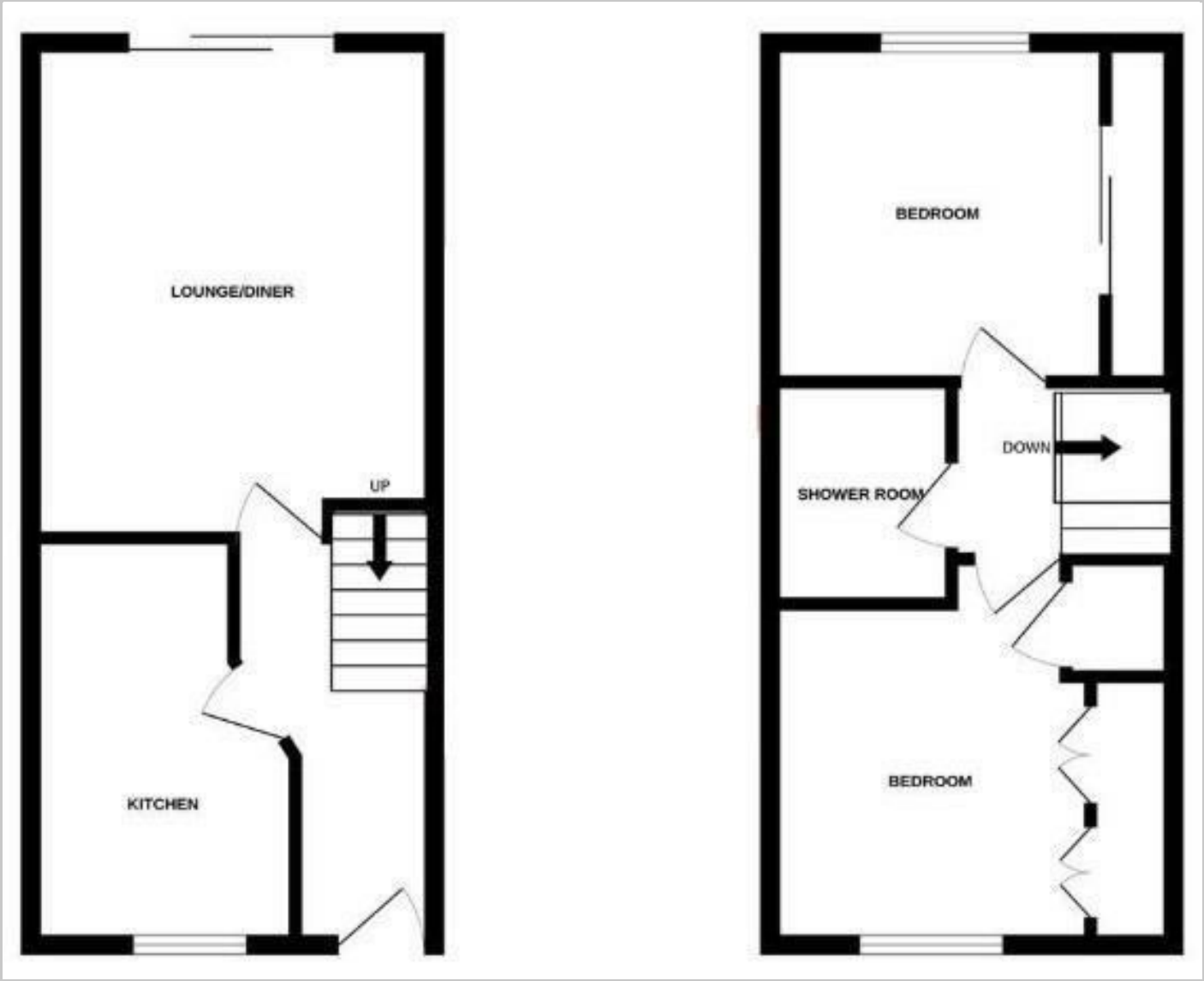
Available Date: 4th December 2025

Oliver & Bailey

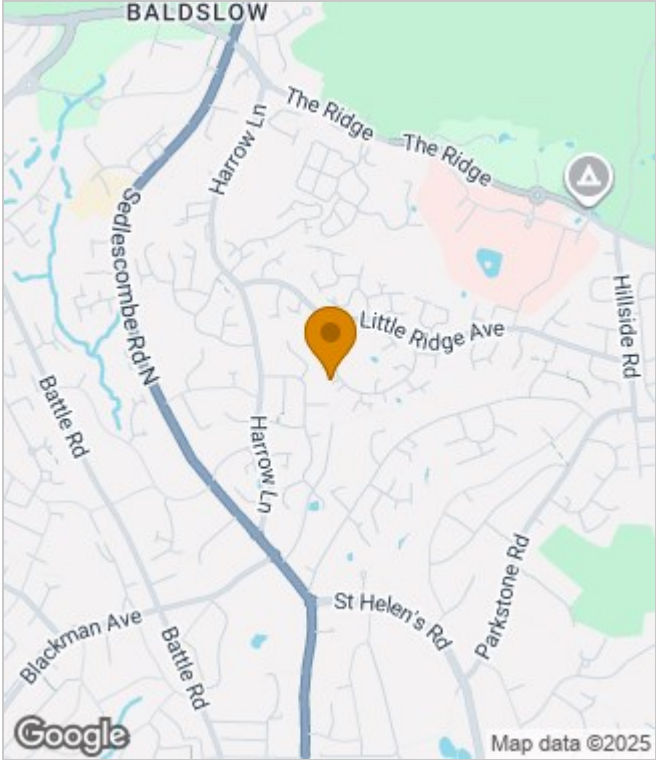
HOUSE LOCATED CLOSE TO THE HOSPITAL AND SCHOOLS. Call Robyn or Georgia at Oliver & Bailey to view this two bedroom neutrally decorated terraced house. The family home is situated just off Hare Way in a quiet cul de sac walking distance to the conquest hospital, local schools and bus routes to Hastings Town Centre.

The property boasts allocated parking, gas central heating and double glazing. Comprising hallway, living room/diner, separate kitchen with integral oven and hob, two good size bedrooms and bathroom with shower over bath, there is also an enclosed rear garden.

FLOORPLAN



AREA MAP



Energy Efficiency Rating			Environmental Impact (CO ₂) Rating		
	Current	Potential		Current	Potential
Very energy efficient - lower running costs			Very environmentally friendly - lower CO ₂ emissions		
(92 plus) A			(92 plus) A		
(81-91) B			(81-91) B		
(69-80) C			(69-80) C		
(55-68) D			(55-68) D		
(39-54) E			(39-54) E		
(21-38) F			(21-38) F		
(1-20) G			(1-20) G		
Not energy efficient - higher running costs			Not environmentally friendly - higher CO ₂ emissions		
England & Wales	EU Directive 2002/91/EC		England & Wales	EU Directive 2002/91/EC	

These particulars, whilst believed to be accurate are set out as a general outline only for guidance and do not constitute any part of an offer or contract. Intending purchasers should not rely on them as statements of representation of fact, but must satisfy themselves by inspection or otherwise as to their accuracy. No person in this firms employment has the authority to make or give any representation or warranty in respect of the property.