



 3  1  1  B

Endeavour Way, Hastings, TN34 3FA
£1,300 Per Calendar Month



Oliver & Bailey

01424 834000 | 01424 533 555

Info@oliverbaileylettings.co.uk
www.oliverbaileylettings.co.uk

Entrance Hallway

Cloakroom

Kitchen

12'11" x 9'3" (3.94m x 2.84m)

Living Room

13'10" x 13'8" (4.22m x 4.17m)

Landing

Bedroom

13'1" x 9'6" (4.01m x 2.92m)

Bedroom

11'5" x 6'9" (3.48m x 2.08m)

Bedroom

7'4" x 6'5" (2.26m x 1.96m)

Bathroom

Garden



Furnished Options: Unfurnished

Council Tax Band: C

Available Date: 30th September 2024

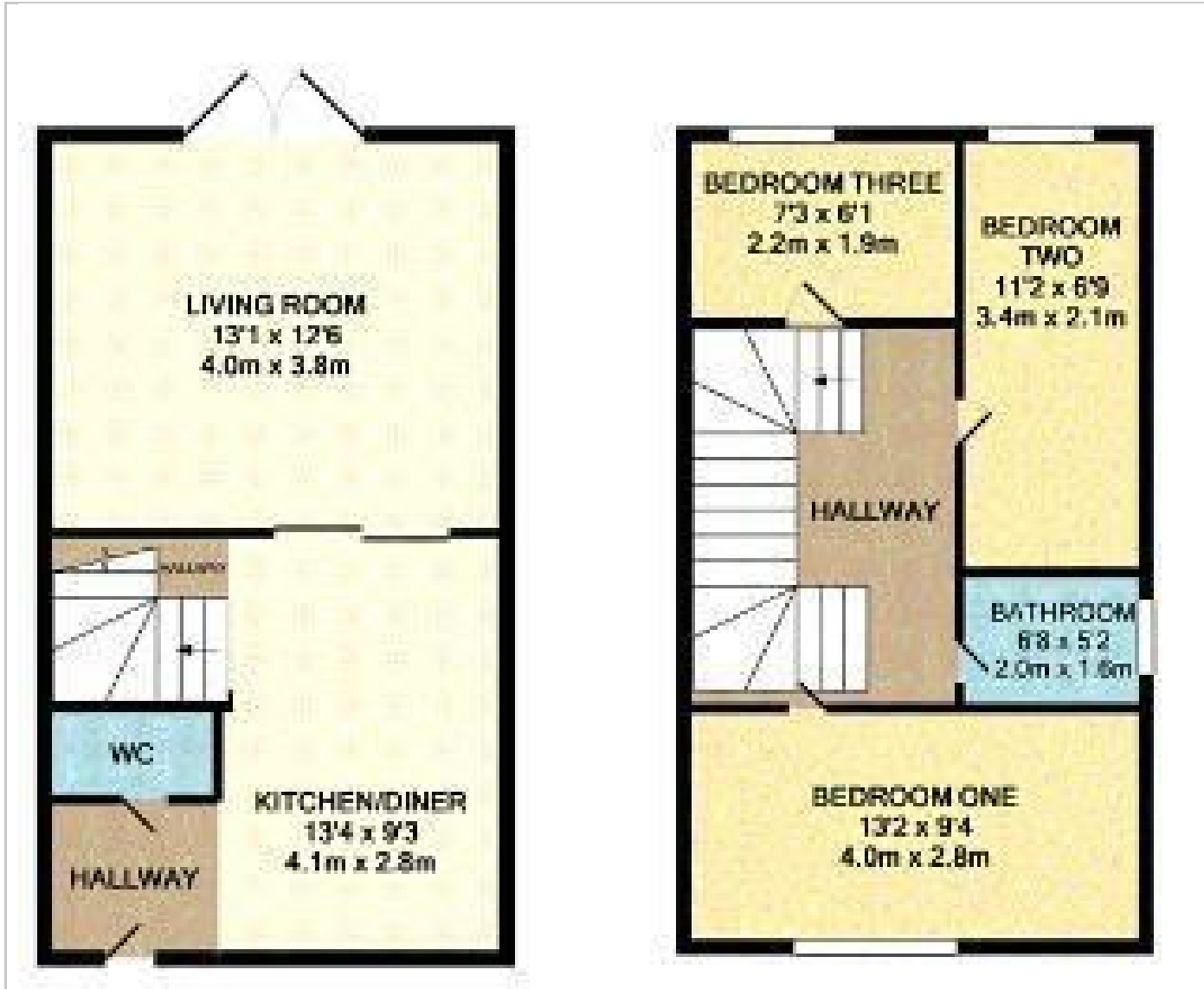
Oliver & Bailey

THREE BEDROOM HOUSE WITH WRAP ROUND GARDEN - LOCATED JUST OFF THE RIDGE CLOSE TO THE CONQUEST HOSPITAL. Call Acacia or Ellie at Oliver & Bailey to view this well presented three bedroom end of terrace family home. The modern property is located in Endeavour Way, a small close just off the Ridge. Situated within easy access to the Conquest Hospital, Bus Routes to Hastings Town Centre and Popular Local Schooling.

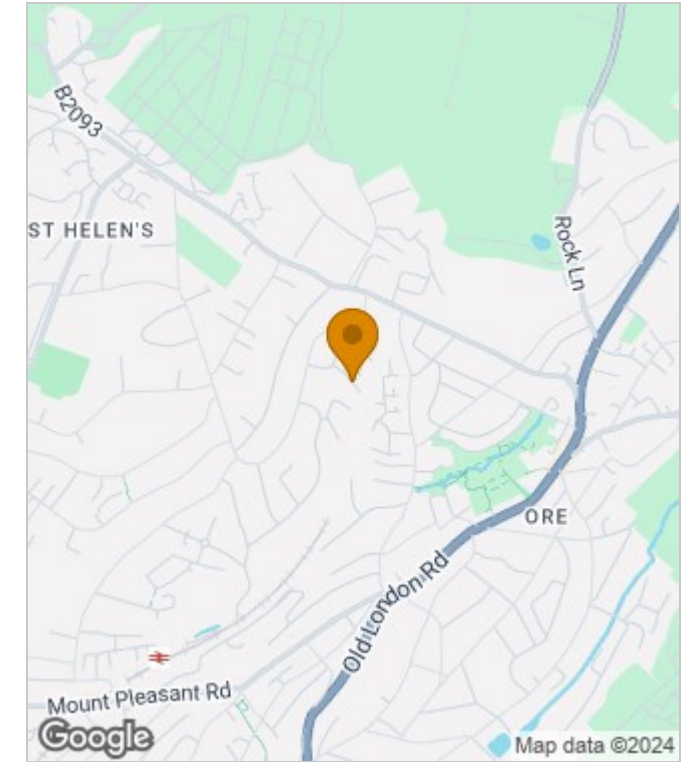
The family home comprises a modern fitted kitchen with integrated oven/hob, a living room with patio doors onto a well maintained garden and a downstairs cloakroom. There are three good sized bedrooms on the first floor and a bathroom with shower over bath.

Further benefits to the property are off road parking for one car and a wrap round garden.

FLOORPLAN



AREA MAP



Energy Efficiency Rating		Current	Potential
Very energy efficient - lower running costs			
(92 plus) A			96
(81-91) B		82	
(69-80) C			
(55-68) D			
(39-54) E			
(21-38) F			
(1-20) G			
Not energy efficient - higher running costs			
England & Wales		EU Directive 2002/91/EC	

Environmental Impact (CO ₂) Rating		Current	Potential
Very environmentally friendly - lower CO ₂ emissions			
(92 plus) A			
(81-91) B			
(69-80) C			
(55-68) D			
(39-54) E			
(21-38) F			
(1-20) G			
Not environmentally friendly - higher CO ₂ emissions			
England & Wales		EU Directive 2002/91/EC	

These particulars, whilst believed to be accurate are set out as a general outline only for guidance and do not constitute any part of an offer or contract. Intending purchasers should not rely on them as statements of representation of fact, but must satisfy themselves by inspection or otherwise as to their accuracy. No person in this firm's employment has the authority to make or give any representation or warranty in respect of the property.