



1 1 1 C

Susans Road, Eastbourne, BN21 3TJ
£800 Per Calendar Month Per



Oliver & Bailey

01424 834000 | 01424 533 555

Info@oliverbaileylettings.co.uk
www.oliverbaileylettings.co.uk

Entrance Hallway

Living Room

13'5" x 13'8" (4.09m x 4.19m)

Open plan kitchen

6'4" x 6'3" (1.94m x 1.92m)

Bedroom

11'9" x 7'8" (3.60m x 2.35m)

Shower Room

4'6" x 4'9" (1.39m x 1.47m)



Furnished Options: Unfurnished

Council Tax Band: A

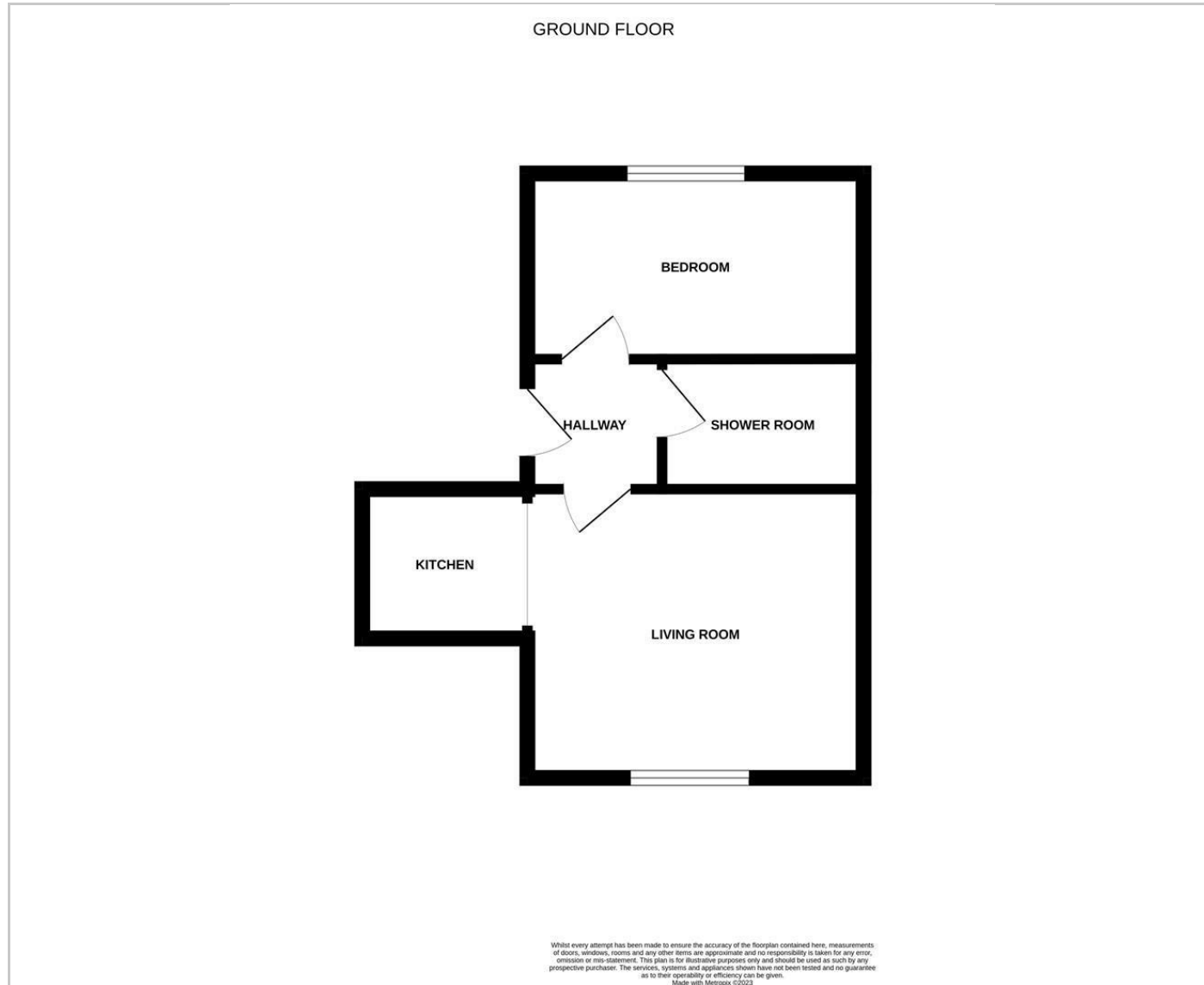
Available Date: 17th August 2024

Oliver & Bailey

BRIGHT ACCOMODATION IN A CENTRAL LOCATION... Call Acacia or Ellie at Oliver & Bailey to view this neutrally decorated first floor flat which is in an excellent location for commuters....

The well presented and contemporary accommodation comprises open plan living room/kitchen with modern fitted units and integrated oven & hob. One double bedroom and shower room with low level w.c & wash hand basin. Further benefits include gas central heating, double glazing, entry phone system.

FLOORPLAN



AREA MAP



Energy Efficiency Rating		Current	Potential
Very energy efficient - lower running costs			
(92 plus) A			
(81-91) B			
(69-80) C			
(55-68) D			
(39-54) E			
(21-38) F			
(1-20) G			
Not energy efficient - higher running costs			
England & Wales		EU Directive 2002/91/EC	

Environmental Impact (CO ₂) Rating		Current	Potential
Very environmentally friendly - lower CO ₂ emissions			
(92 plus) A			
(81-91) B			
(69-80) C			
(55-68) D			
(39-54) E			
(21-38) F			
(1-20) G			
Not environmentally friendly - higher CO ₂ emissions			
England & Wales		EU Directive 2002/91/EC	

These particulars, whilst believed to be accurate are set out as a general outline only for guidance and do not constitute any part of an offer or contract. Intending purchasers should not rely on them as statements of representation of fact, but must satisfy themselves by inspection or otherwise as to their accuracy. No person in this firm's employment has the authority to make or give any representation or warranty in respect of the property.