



- Fantastic location
- Two good size bedrooms
- Modern kitchen
- Modern bathroom

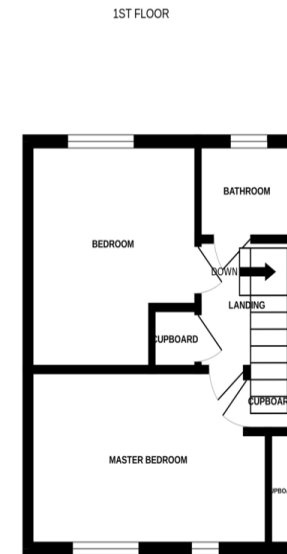
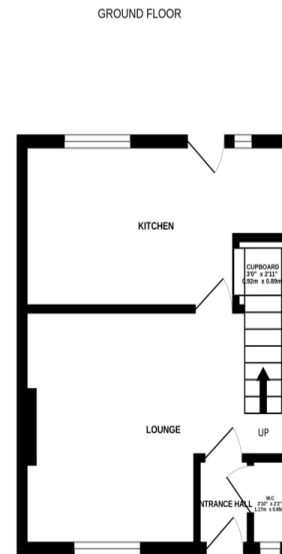
Longley Lane, Manchester, M22 4LA

£255,000

South Manchester Homes are pleased to offer for sale this well presented, modern terrace in Northenden, Manchester. This well presented two double bedroom terrace briefly comprises of a welcoming hallway, WC, good size living room, separate modern kitchen and dining area. Upstairs there are two good size bedrooms the main with fitted wardrobes, family bathroom with shower above the bath. Externally there is a well presented garden. The property has access to park one car and is offered with no onward chain.

Freehold

Council tax band: A



Whilst every attempt has been made to ensure the accuracy of the floorplans contained here, measurements of doors, windows, rooms and any other items are approximate and no responsibility is taken for any error, omission or mis-statement. This plan is for illustrative purposes only and should be used as such by any prospective purchaser. The services, systems and appliances shown have not been tested and no guarantee as to their operability or efficiency can be given.
Made with Metroplan 6/2014



Score	Energy rating	Current	Potential
92+	A		
81-91	B		89 B
69-80	C	74 C	
55-68	D		
39-54	E		
21-38	F		
1-20	G		

Suite 97, 792 Wilmslow Road,
Manchester, Lancashire, M20
6UG

www.southmanchesterhomes.co.uk
0161 434 2000
info@smcrhomes.co.uk

Agents Note: Whilst every care has been taken to prepare these particulars, they are for guidance purposes only. All measurements are approximate and for general guidance purposes only and whilst every care has been taken to ensure their accuracy, they should not be relied upon and potential buyers/tenants are advised to recheck the measurements