

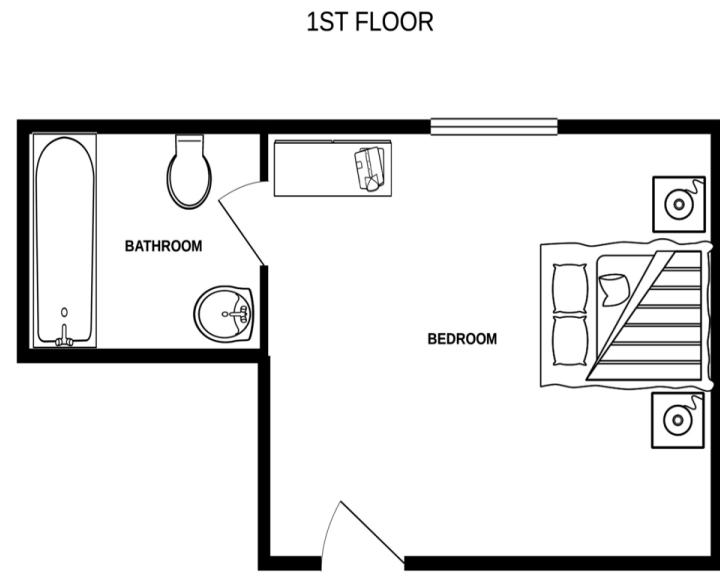


- All Inclusive bills
- Excellent condition
- New furniture
- En-suite facilities

Room 29 Victoria House, 55 Manchester Road, Knutsford, WA16 0LX

£750 pcm

South Manchester Homes are pleased to offer for rent this large studio room in Victoria House, Knutsford. A self contained room in a beautiful converted Victorian semi detached house including gas, water, electricity, council tax and the internet. The property is located on the 1st floor



Whilst every attempt has been made to ensure the accuracy of the floorplan contained here, measurements of doors, windows, rooms and any other items are approximate and no responsibility is taken for any error, omission or mis-statement. This plan is for illustrative purposes only and should be used as such by any prospective purchaser. The services, systems and appliances shown have not been tested and no guarantee as to their operability or efficiency can be given.
Made with Metropix. ©2020



Suite 97, 792 Wilmslow Road,
Manchester, Lancashire, M20
6UG

www.southmanchesterhomes.co.uk
0161 434 2000
info@smcrhomes.co.uk

Agents Note: Whilst every care has been taken to prepare these particulars, they are for guidance purposes only. All measurements are approximate and are for general guidance purposes only and whilst every care has been taken to ensure their accuracy, they should not be relied upon and potential buyers/tenants are advised to recheck the measurements.