

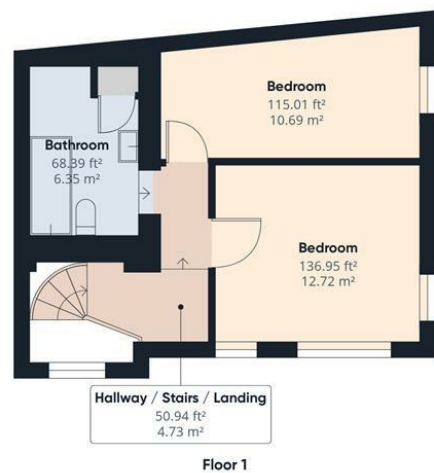
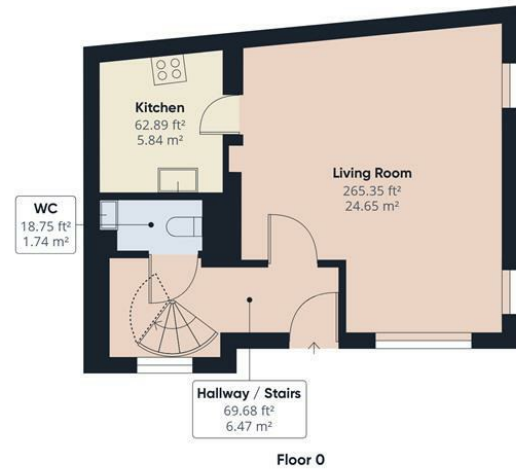


Charles Louis Homes Ltd
4 Bolton Street
Ramsbottom
Bury
BLO 9HX

CHARLES LOUIS

HOMES LIMITED

E propertyenquiries@charleslouis.co.uk
T 0161 959 0166
www.charleslouishomes.co.uk



Approximate total area⁽¹⁾

792.40 ft²
73.62 m²

Reduced headroom

0.07 ft²
0.01 m²

(1) Excluding balconies and terraces

Reduced headroom (below 1.5m/4.92ft)

While every attempt has been made to ensure accuracy, all measurements are approximate, not to scale. This floor plan is for illustrative purposes only.

GIRAFFE360



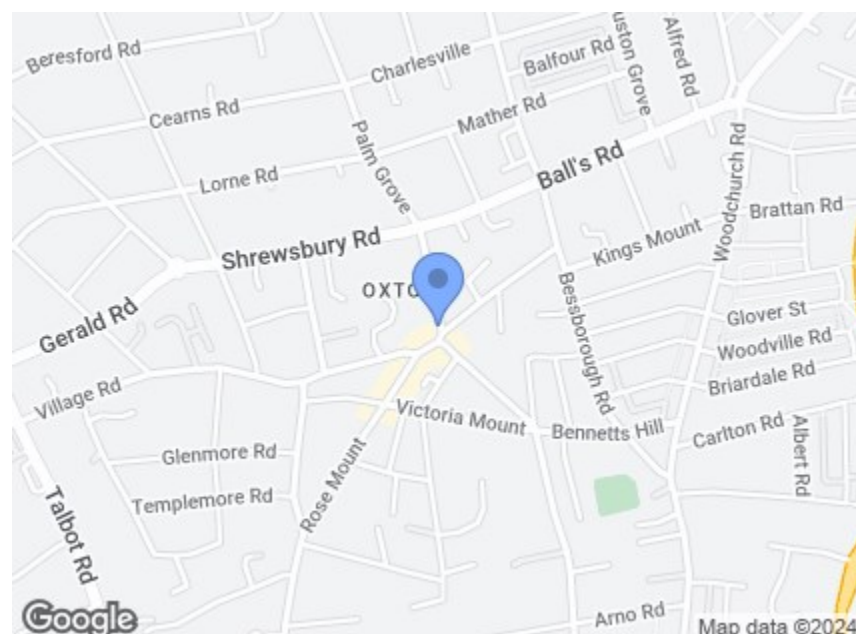
18 Palm Hill Prenton, CH43 5SP

£1,100 Per month

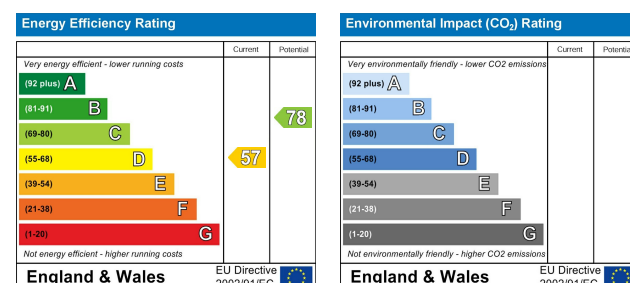


- Newly Refurbished & Stylish Terrace
- Sought After Location in Oxtton Village
- Easy Access to the Centre of Liverpool
- Two Double Bedrooms & Two Bathrooms

- Fully Furnished & Ready to Occupy
- Fantastic Amenities at your Door Step
- Open Plan Lounge & Diner, Fitted Kitchen
- Must be Viewed to be Appreciated



Directions



These particulars, whilst believed to be accurate are set out as a general outline only for guidance and do not constitute any part of an offer or contract. Intending purchasers should not rely on them as statements of representation of fact, but must satisfy themselves by inspection or otherwise as to their accuracy. No person in this firm's employment has the authority to make or give any representation or warranty in respect of the property.

18 Palm Hill

, Prenton, CH43 5SP

NEWLY REFURBISHED AND FULLY FURNISHED, this stunning terraced house is situated in the heart of the charming village of Oxtan, ten minutes from the centre of Liverpool. This stylish house is close to a host of chic bars, cafes, boutiques and a Michelin Star restaurant and offers two spacious double bedrooms, a light and modern living space, fully equipped kitchen, two bathrooms and feature spiral staircase. Ideal for a professional couple commuting into the city, the property is available to occupy as soon as possible, and viewing is strongly recommended.

COUNCIL TAX BAND TO BE CONFIRMED