



## 23 Torentun Close

Thornton, Liverpool, L23 4TD

Prices from **£254,995**



CASTLE GREEN HOMES \*\*INCENTIVES Plot 173 to include flooring throughout and 5% deposit contribution for First Time Buyers! \*\*Plot 174 - 5% deposit contribution for First Time Buyers!

OPEN PLAN KITCHEN, DINING and LIVING area. TWO BEDROOMS with EN SUITE to the large primary bedroom and FAMILY BATHROOM.

The Ashton  
This delightful two bedroom terraced home is perfect for first time buyers. With a welcoming hallway leading to a spacious open plan kitchen, dining, living area which is perfect for entertaining or relaxing with family. Two spacious bedrooms are located on the top floor along with en-suite to master and a separate family bathroom. Downstairs cloaks and off road parking complete this wonderful family home.

\*\*Assisted Move Scheme Available, call for details!\*\*



**Kitchen/Dining 15'0" x 10'11" (4.58 x 3.33)**

**Lounge 15'7" x 11'1" (4.75 x 3.39)**

**Cloaks 5'1" x 3'7" (1.56 x 1.10)**

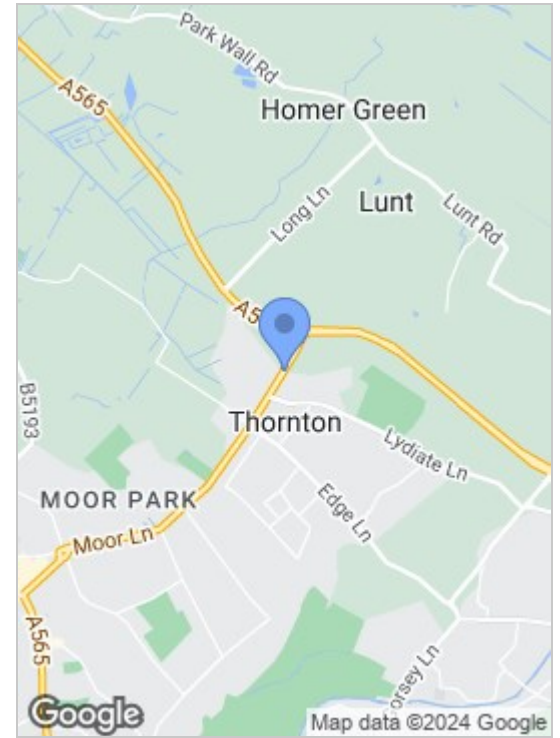
**Bedroom 1 15'0" x 10'7" (4.58 x 3.25)**

**En-Suite 7'10" x 3'10" (2.40 x 1.18)**

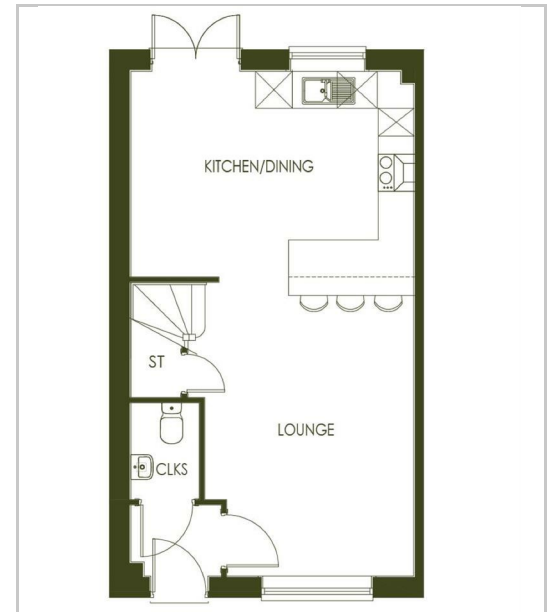
**Bedroom 2 11'8" x 7'10" (3.56 x 2.40)**

**Bathroom 6'10" x 6'1" (2.09 x 1.87)**

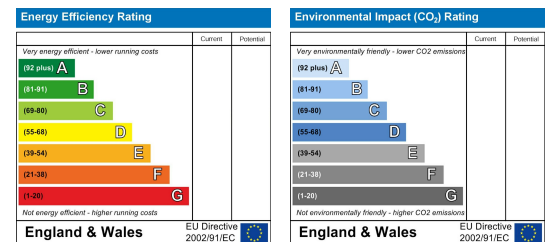
## Area Map



## Floor Plans



## Energy Efficiency Graph



These particulars, whilst believed to be accurate are set out as a general outline only for guidance and do not constitute any part of an offer or contract. Intending purchasers should not rely on them as statements of representation of fact, but must satisfy themselves by inspection or otherwise as to their accuracy. No person in this firm's employment has the authority to make or give any representation or warranty in respect of the property.

82 Coronation Road, Crosby, Liverpool L23 5RH

6 Allerton Road, Mossley Hill, Liverpool, L18 1LN

2 Chapel Lane, Formby, Liverpool, L37 4DU

**Tel:** 0151 909 3003

**Email:** crosby@abode.group.co.uk

**Web:** www.abode-group.co.uk

**Tel:** 0151 601 3003

**Email:** allerton@abode-group.co.uk

**Web:** www.abode-group.co.uk

**Tel:** 01704 827 402

**Email:** formby@abode-group.co.uk

**Web:** www.abode-group.co.uk