



## 19 Hollow Drive

Thornton, Liverpool, L23 4TD

Prices from **£414,995**



CASTLE GREEN HOMES - OPEN-PLAN living with its KITCHEN/DINING area. A cloakroom, UTILITY room, EN-SUITE bathroom and a single INTEGRATED GARAGE combine to create the ultimate family home.

About The Wentworth

The Wentworth fuses elegant design with contemporary features to create a comfortable home of distinction. The welcoming hallway leads to the spacious living area, while the open-plan kitchen/dining area forms the beating heart of this beautiful house. The en suite master bedroom is one of four first-floor bedrooms offering plenty of space. Finally, the cloakroom and an integrated garage are desirable features fit for modern family life.

\*\*Assisted Move Scheme available, call to discuss\*\*



**Kitchen/Dining 19'3" x 12'3" (5.89 x 3.74)**

**Lounge 17'7" x 10'5" (5.38 x 3.18)**

**Utility 8'4" x 6'5" (2.56 x 1.98)**

**Cloaks 6'5" x 3'7" (1.98 x 1.10)**

**Garage 18'0" x 8'6" (5.50 x 2.60)**

**Bedroom 1 15'8" x 9'10" (4.78 x 3.00)**

**Bedroom 2 13'6" x 8'9" (4.13 x 2.68)**

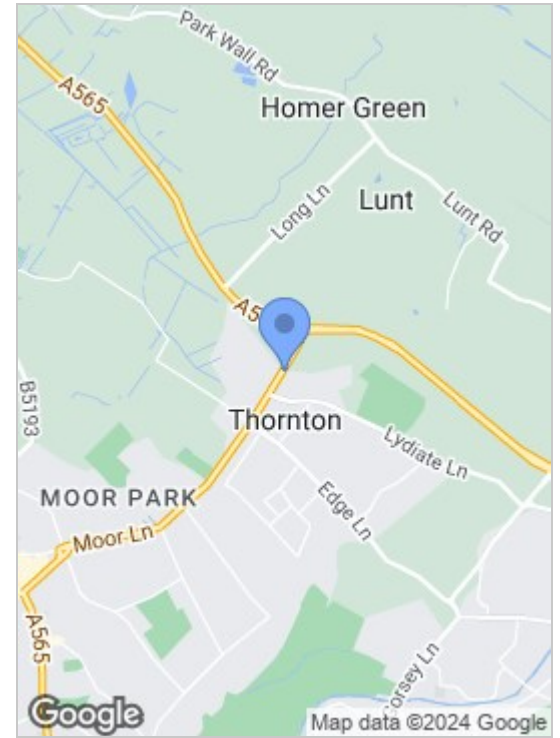
**Bedroom 3 13'0" x 9'8" (3.97 x 2.96)**

**Bedroom 4 10'6" x 9'4" (3.21 x 2.85)**

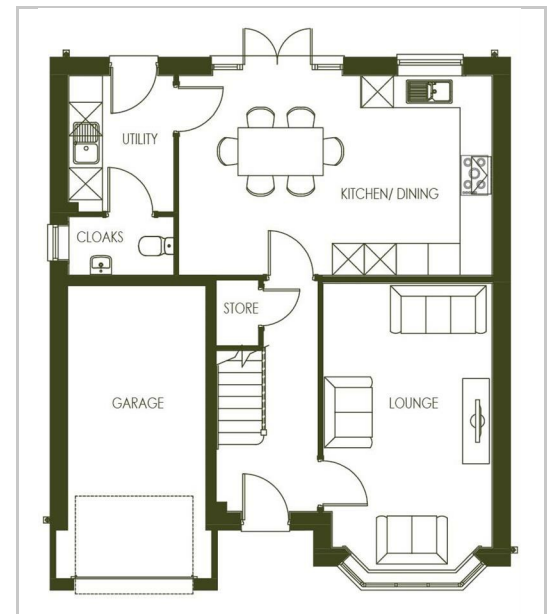
**Bathroom 9'4" x 6'2" (2.85 x 1.88)**

**En Suite 8'0" x 6'10" (2.45 x 2.09)**

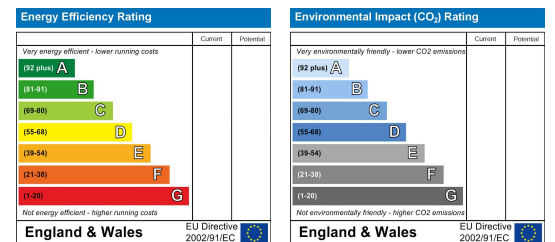
## Area Map



## Floor Plans



## Energy Efficiency Graph



These particulars, whilst believed to be accurate are set out as a general outline only for guidance and do not constitute any part of an offer or contract. Intending purchasers should not rely on them as statements of representation of fact, but must satisfy themselves by inspection or otherwise as to their accuracy. No person in this firm's employment has the authority to make or give any representation or warranty in respect of the property.

82 Coronation Road, Crosby, Liverpool L23 5RH

6 Allerton Road, Mossley Hill, Liverpool, L18 1LN

2 Chapel Lane, Formby, Liverpool, L37 4DU

**Tel:** 0151 909 3003

**Email:** crosby@abode-group.co.uk

**Web:** www.abode-group.co.uk

**Tel:** 0151 601 3003

**Email:** allerton@abode-group.co.uk

**Web:** www.abode-group.co.uk

**Tel:** 01704 827 402

**Email:** formby@abode-group.co.uk

**Web:** www.abode-group.co.uk