



428 Liverpool Road

Ainsdale, PR8 3BA

£795,000

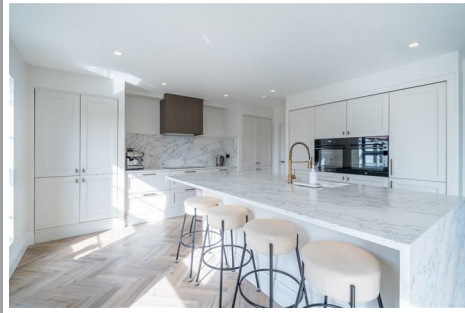
 4  3  3  C



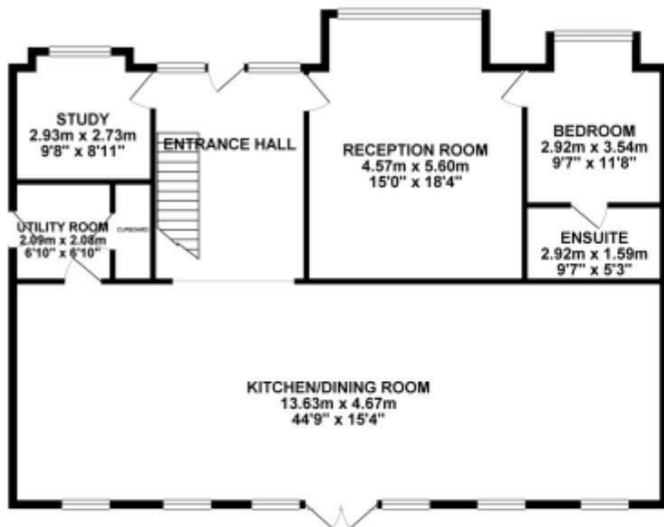
428 Liverpool Road

Ainsdale, PR8 3BA

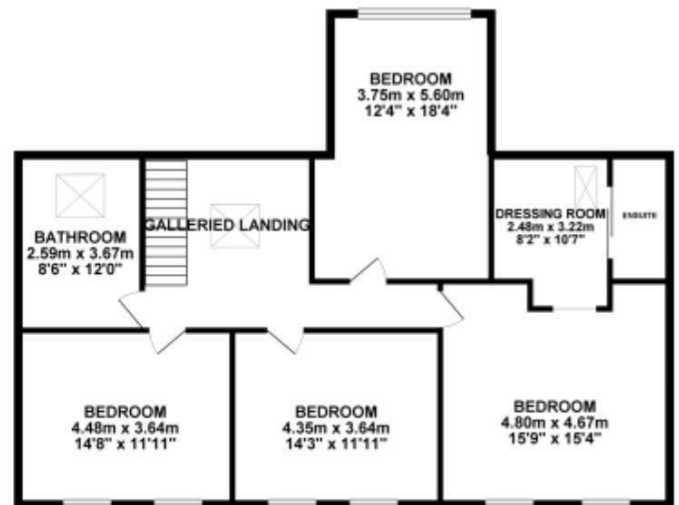
£795,000



GROUND FLOOR 130.23 sq. m.
(1401.76 sq. ft.)



1ST FLOOR 109.57 sq. m.
(1179.36 sq. ft.)

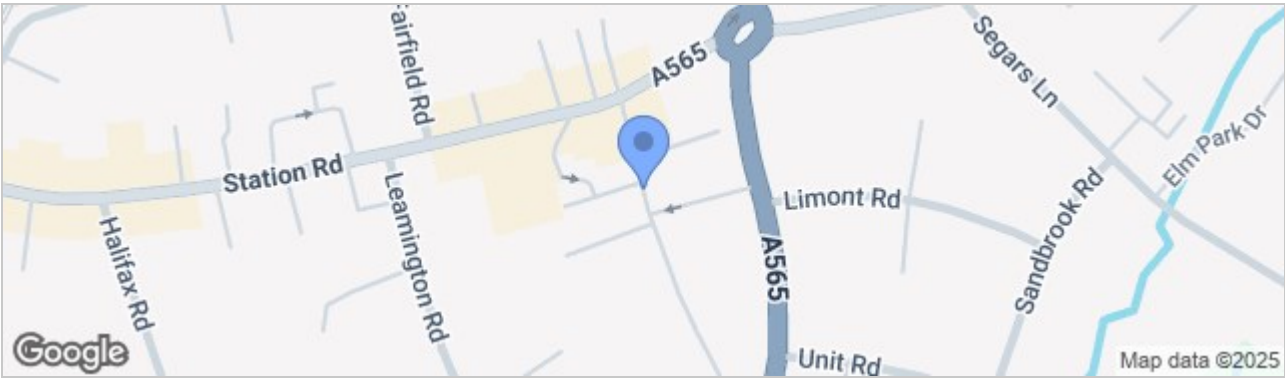


TOTAL FLOOR AREA : 257.00 sq. m. (2766.32 sq. ft.) approx.

Whilst every attempt has been made to ensure the accuracy of the floorplan contained here, measurements of doors, windows, rooms and any other items are approximate and no responsibility is taken for any error, omission or mis-statement. This plan is for illustrative purposes only and should be used as such by any prospective purchaser. The services, systems and appliances shown have not been tested and no guarantee as to their operability or efficiency can be given.
Made with Metropix 60325



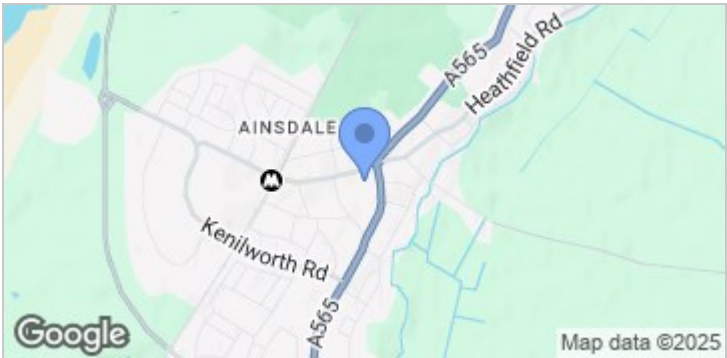
Road Map



Hybrid Map



Terrain Map



- A SIMPLY STUNNING FOUR/ FIVE BEDROOM DETACHED HOUSE
- THREE BEAUTIFUL BATHROOMS
- A MAGNIFICENT OPEN PLAN KITCHEN & FAMILY ROOM
- UTILITY ROOM & HOME OFFICE
- ARCHITECTURALLY DESIGNED WITH HIGH SPECIFICATION FIXTURES & FITTINGS
- LANDSCAPED REAR GARDENS & CONVERTED GARAGE
- EQUIDISTANT TO AINSDALE & BIRKDALE VILLAGES
- TENURE FREEHOLD - COUNCIL TAX BAND E

Viewing

Please contact our Formby Office on 01704827402 if you wish to arrange a viewing appointment for this property or require further information.

These particulars, whilst believed to be accurate are set out as a general outline only for guidance and do not constitute any part of an offer or contract. Intending purchasers should not rely on them as statements of representation of fact, but must satisfy themselves by inspection or otherwise as to their accuracy. No person in this firms employment has the authority to make or give any representation or warranty in respect of the property.

Energy Efficiency Graph

