



## 8 Wayside Close

Thornton, Liverpool, L23 4TD

Prices from **£409,995**



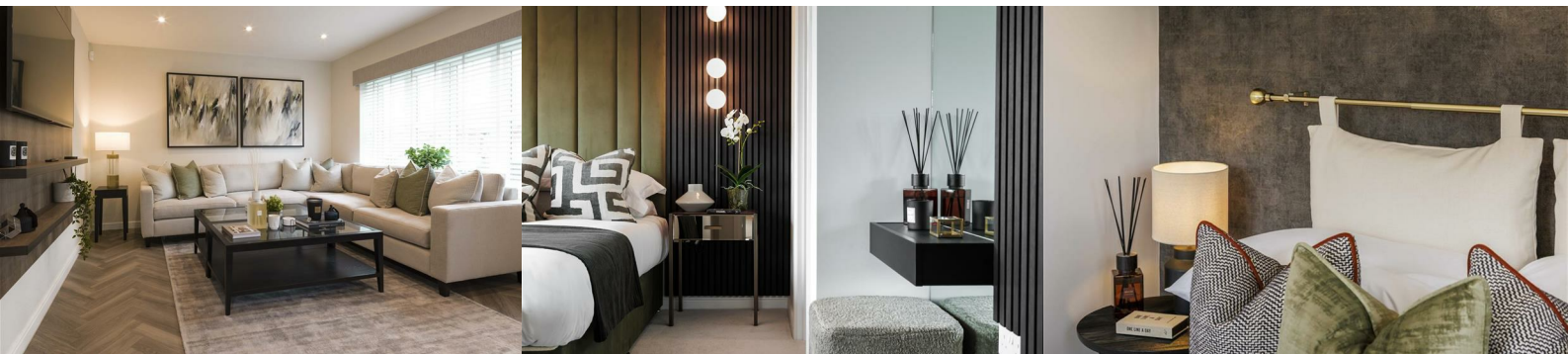
Castle Green Homes \*PLOT 21 Ready to Move In To\*\* Includes FLOORING THROUGHOUT, QUARTZ WORKTOPS and TURF TO REAR GARDEN\*\* OPEN-PLAN KITCHEN, DINING area, separate UTILITY room, EN SUITE bathroom in the primary bedroom.

Buy Now to Avoid Stamp Duty Increases on 1st April - Plots READY TO RESERVE COMPLETION BY MARCH 2025

\*\*Home Assisted Move Scheme Available, call to discuss\*\*

About The Heatherington

As you open the door to the Heatherington you are welcomed with a spacious hallway. To one side you will find a large living room spanning the whole length of the house, perfect for relaxing after a long day. While to the



**Kitchen/Dining 12'5" x 11'3" (3.80 x 3.45)**

**Family 11'6" x 11'3" (3.51 x 3.45)**

**Lounge 20'2" x 12'0" (6.15 x 3.68)**

**Utility 6'8" x 5'6" (2.05 x 1.70)**

**Cloaks 5'2" x 3'6" (1.58 x 1.08)**

**Bedroom 1 11'8" x 11'6" (3.58 x 3.51)**

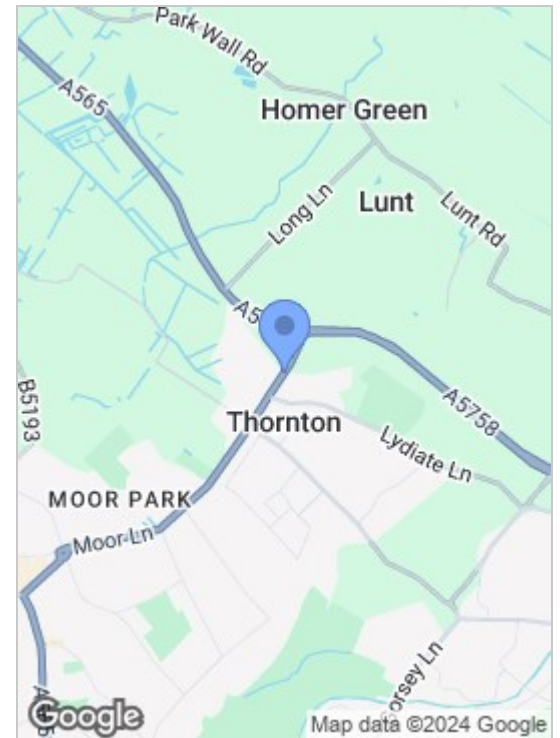
**Bedroom 2 12'2" x 10'9" (3.73 x 3.28)**

**Bedroom 3 11'5" x 11'3" (3.49 x 3.45)**

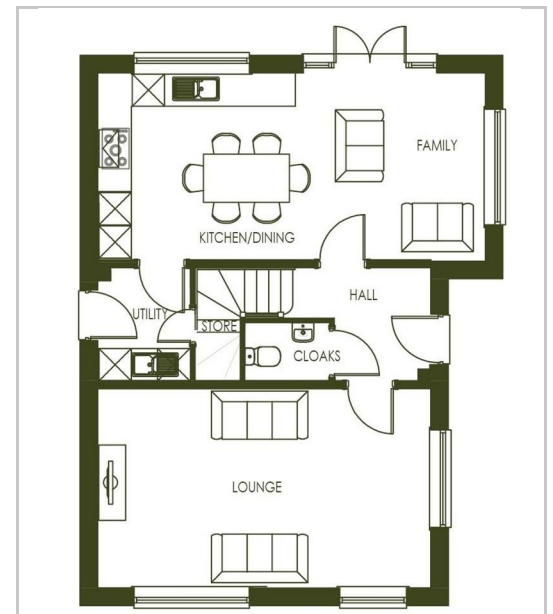
**Bathroom 7'0" x 5'6" (2.15 x 1.70)**

**En Suite 8'1" x 5'6" (2.48 x 1.70)**

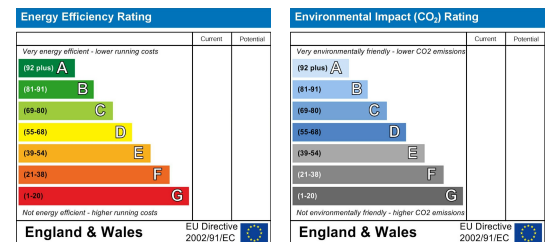
## Area Map



## Floor Plans



## Energy Efficiency Graph



These particulars, whilst believed to be accurate are set out as a general outline only for guidance and do not constitute any part of an offer or contract. Intending purchasers should not rely on them as statements of representation of fact, but must satisfy themselves by inspection or otherwise as to their accuracy. No person in this firm's employment has the authority to make or give any representation or warranty in respect of the property.

82 Coronation Road, Crosby, Liverpool L23 5RH

6 Allerton Road, Mossley Hill, Liverpool, L18 1LN

2 Chapel Lane, Formby, Liverpool, L37 4DU

**Tel:** 0151 909 3003

**Email:** crosby@abode.group.co.uk

**Web:** www.abode-group.co.uk

**Tel:** 0151 601 3003

**Email:** allerton@abode-group.co.uk

**Web:** www.abode-group.co.uk

**Tel:** 01704 827 402

**Email:** formby@abode-group.co.uk

**Web:** www.abode-group.co.uk