



## 6 Stock Close

Thornton, Liverpool, L23 4TD

Prices from **£454,995**



CASTLE GREEN HOMES - OPEN-PLAN KITCHEN, DINING & FAMILY area, THREE EN SUITE BATHROOMS, WALK THROUGH DRESSING AREA to primary bedroom, single integrated GARAGE & Separate UTILITY.

Buy Now to Avoid Stamp Duty Increases on 1st April - Plots READY TO RESERVE COMPLETION BY MARCH 2025

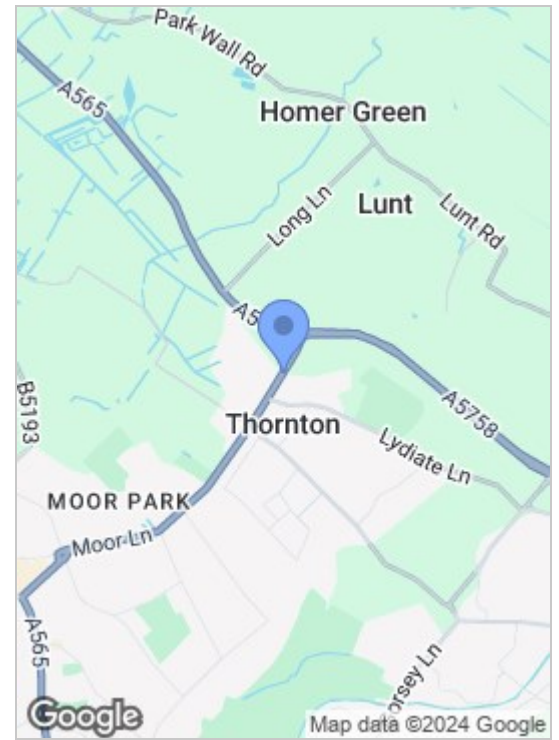
About The Windsor

The Windsor fuses elegant design with contemporary features to create the ultimate family home. A welcoming hallway leads to the spacious living area with a standout bay window that allows natural light to flood in. The open-plan kitchen, dining and family area forms the beating heart of this beautiful house, perfect for entertaining guests or relaxing with all the family. The lavish primary bedroom has a walk through dressing area to the en-suite, with an additional two en-suites to the two bedrooms offering plenty of space. Finally, the cloakroom, utility area and an integrated garage are desirable features fit for modern family life.

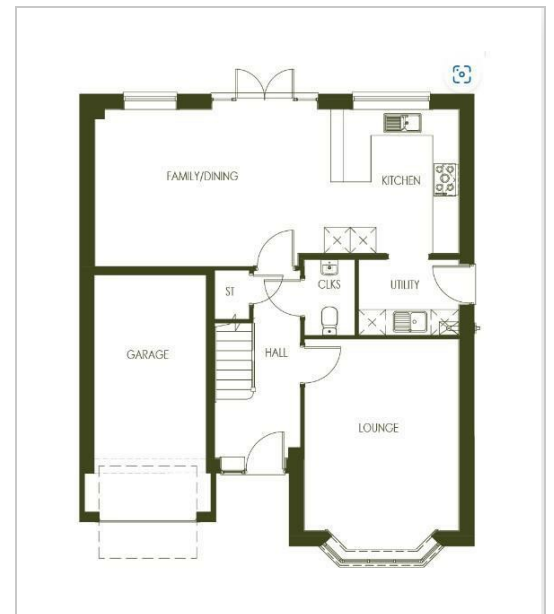


- Kitchen 10'11" x 10'8" (3.33 x 3.26)**
- Family/Dining 16'10" x 11'10" (5.14 x 3.63)**
- Lounge 16'1" x 11'8" (4.91 x 3.57)**
- Cloaks 5'8" x 3'9" (1.75 x 1.16)**
- Utility 7'7" x 5'8" (2.32 x 1.75)**
- Garage 18'0" x 8'6" (5.50 x 2.60)**
- Bedroom 1 16'5" x 11'8" (5.02 x 3.57)**
- Dressing Area 8'2" x 7'6" (2.50 x 2.29)**
- En Suite 10'0" x 8'9" (3.07 x 2.69)**
- Bedroom 2 12'9" x 8'9" (3.89 x 2.69)**
- En Suite 2 6'6" x 4'7" (1.99 x 1.42)**
- Bedroom 3 12'0" x 8'9" (3.67 x 2.69)**
- En Suite 3 8'9" x 4'10" (2.69 x 1.49)**

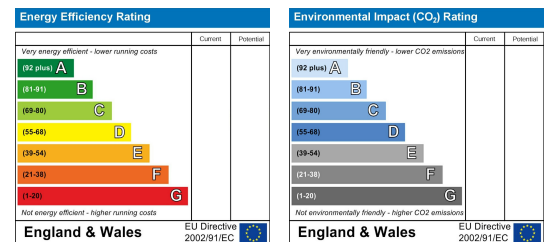
## Area Map



## Floor Plans



## Energy Efficiency Graph



These particulars, whilst believed to be accurate are set out as a general outline only for guidance and do not constitute any part of an offer or contract. Intending purchasers should not rely on them as statements of representation of fact, but must satisfy themselves by inspection or otherwise as to their accuracy. No person in this firm's employment has the authority to make or give any representation or warranty in respect of the property.

82 Coronation Road, Crosby, Liverpool L23 5RH

**Tel:** 0151 909 3003  
**Email:** crosby@abode.group.co.uk  
**Web:** www.abode-group.co.uk

6 Allerton Road, Mossley Hill, Liverpool, L18 1LN

**Tel:** 0151 601 3003  
**Email:** allerton@abode-group.co.uk  
**Web:** www.abode-group.co.uk

2 Chapel Lane, Formby, Liverpool, L37 4DU

**Tel:** 01704 827 402  
**Email:** formby@abode-group.co.uk  
**Web:** www.abode-group.co.uk