



2 Torentun Close

Thornton, Liverpool, L23 4TD

Prices from **£383,995**



Castle Green Homes *Cheltenham* Plot 54 to include excellent sales incentives to include QUARTZ WORKTOPS, FLOORING THROUGHOUT and TURF to rear garden. THREE EN-SUITE BATHROOMS, OPEN-PLAN kitchen, dining and family area, single INTEGRATED GARAGE and CLOAKROOM.

Buy Now to Avoid Stamp Duty Increases on 1st April - Plots READY TO RESERVE COMPLETION BY MARCH 2025

Assisted Move Scheme Available

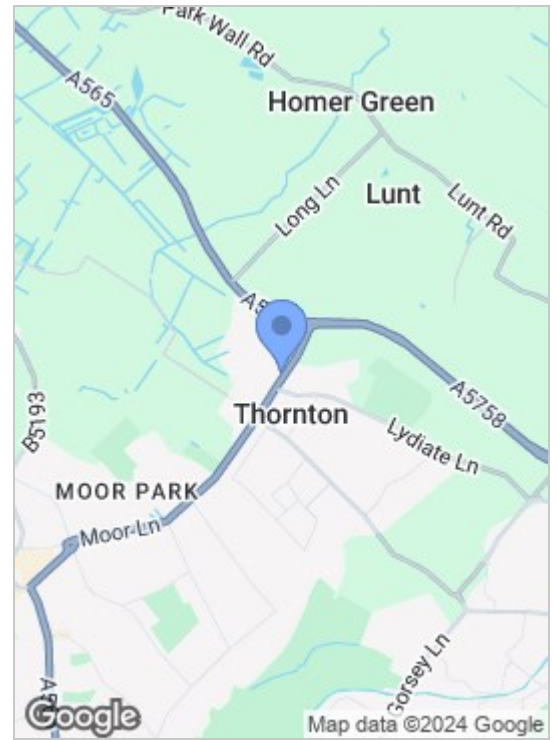
About The Cheltenham

The Cheltenham at Orchard Place, Thornton is an ideal choice for those looking for open plan living. To the rear of the ground floor you'll find a spacious kitchen & dining room, where French doors open out onto the garden.

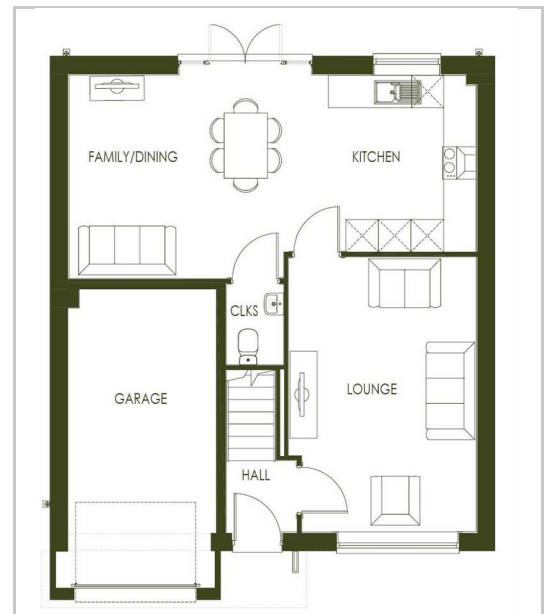


- kitchen 10'8" x 8'11" (3.26 x 2.72)**
- Family/Dining 15'8" x 12'3" (4.78m x 3.74m)**
- Lounge 16'7" x 11'4" (5.06m x 3.46m)**
- Cloaks 4'11" x 3'5" (1.50m x 1.06m)**
- Garage 18'0" x 8'11" (5.50m x 2.74m)**
- Bedroom 1 11'9" x 11'1" (3.59m x 3.39m)**
- Bedroom 2 12'5" x 9'7" (3.81m x 2.93m)**
- Bedroom 3 12'0" x 8'9" (3.68m x 2.68m)**
- En-Suite 1 8'9" x 8'0" (2.68m x 2.45m)**
- En-Suite 2 5'10" x 4'9" (1.80m x 1.46m)**
- En-Suite 3 8'9" x 5'7" (2.68m x 1.72m)**
- Dress Area 8'9" x 7'1" (2.67m x 2.16m)**

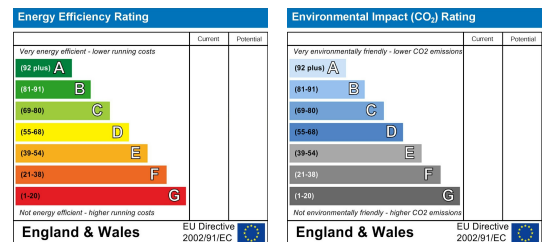
Area Map



Floor Plans



Energy Efficiency Graph



These particulars, whilst believed to be accurate are set out as a general outline only for guidance and do not constitute any part of an offer or contract. Intending purchasers should not rely on them as statements of representation of fact, but must satisfy themselves by inspection or otherwise as to their accuracy. No person in this firm's employment has the authority to make or give any representation or warranty in respect of the property.

82 Coronation Road, Crosby, Liverpool L23 5RH

6 Allerton Road, Mossley Hill, Liverpool, L18 1LN

2 Chapel Lane, Formby, Liverpool, L37 4DU

Tel: 0151 909 3003

Email: crosby@abode.group.co.uk

Web: www.abode-group.co.uk

Tel: 0151 601 3003

Email: allerton@abode-group.co.uk

Web: www.abode-group.co.uk

Tel: 01704 827 402

Email: formby@abode-group.co.uk

Web: www.abode-group.co.uk