



8 Whitefield Close

Hightown, L38 9GF

Asking price £320,000



8 Whitefield Close

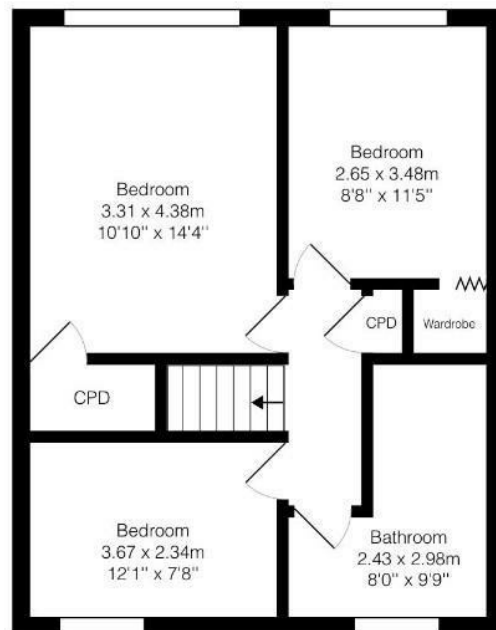
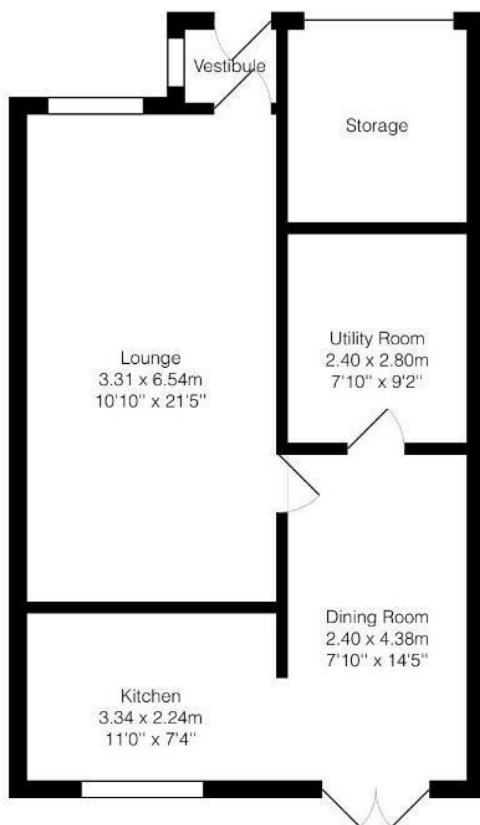
Hightown, L38 9GF

Asking price £320,000



Ground Floor

1st Floor

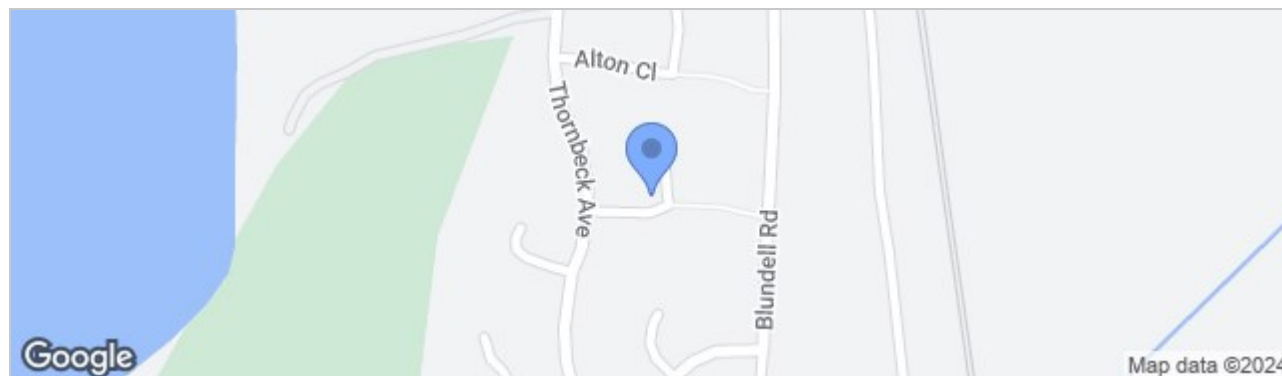


Total Area: 105.6 m² ... 1136 ft²

All measurements are approximate and for display purposes only.



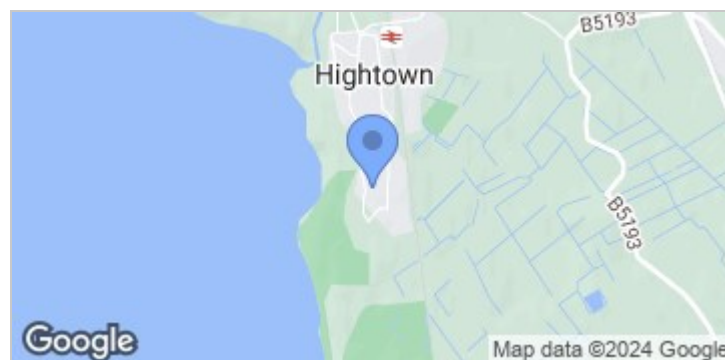
Road Map



Hybrid Map



Terrain Map



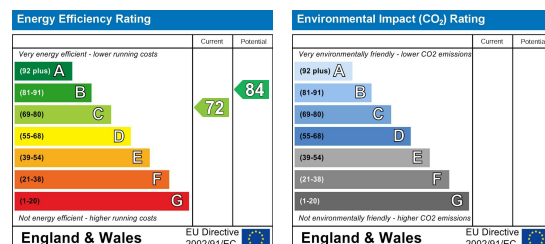
- **THREE BEDROOM DETACHED HOME**
- **IMMACULATE CONDITION**
- **LOUNGE WITH FRONT ASPECT**
- **SEPARATE UTILITY ROOM**
- **DINING AREA**
- **BEAUTIFUL NEW MODERN FITTED KITCHEN**
- **WELL ESTABLISHED GARDEN**
- **GREAT STORAGE SPACE TO THE FRONT**
- **DRIVEWAY FOR MULTIPLE CARS**
- **SOUTH FACING GARDEN**

Viewing

Please contact our Formby Office on 01704827402 if you wish to arrange a viewing appointment for this property or require further information.

These particulars, whilst believed to be accurate are set out as a general outline only for guidance and do not constitute any part of an offer or contract. Intending purchasers should not rely on them as statements of representation of fact, but must satisfy themselves by inspection or otherwise as to their accuracy. No person in this firm's employment has the authority to make or give any representation or warranty in respect of the property.

Energy Efficiency Graph



82 Coronation Road, Crosby, Liverpool L23 5RH

Tel: 0151 909 3003
Email: crosby@abode.group.co.uk
Web: www.abode-group.co.uk

6 Allerton Road, Mossley Hill, Liverpool, L18 1LN

Tel: 0151 601 3003
Email: allerton@abode-group.co.uk
Web: www.abode-group.co.uk

2 Chapel Lane, Formby, Liverpool, L37 4DU

Tel: 01704 827 402
Email: formby@abode-group.co.uk
Web: www.abode-group.co.uk