



## 4 Walnut Way, Scunthorpe, DN17 3UU

£299,950

Sit in a quiet position at the back of the Macleans Estate in Messingham, is this four bed detached family home that has great room sizes throughout and a lovely private rear garden. With potential to make a fantastic open plan kitchen to the rear, the property has a layout that can be flexible on both the ground floor and the first floor.

Downstairs there is a central entrance hall, lounge leading through to the sitting room, neutral kitchen diner, W.C. and integral garage. Upstairs the main bedroom is particularly generous with fitted wardrobes and an En suite, there are two further double bedrooms, one with an En suite, a further well proportioned bedroom and a family bathroom. With off road parking for a couple of cars at the front of the property and close to local amenities and great school catchments, this would make an ideal family home!

To book a viewing, please give the office a call!



Entrance hall



Bedroom one 12'4" x 15'2" (3.76 x 4.64)



En-suite 5'6" x 8'10" (1.68 x 2.71)



Lounge 20'1" x 10'5" (6.13 x 3.18)



Sitting room 11'10" x 8'11" (3.61 x 2.73)

Kitchen diner 12'9" x 13'3" (3.89 x 4.05)



Downstairs W.C.

Integral garage 18'2" x 8'3" (5.54 x 2.54)

Landing



Bedroom two 12'7" x 8'7" (3.85 x 2.63)



En-suite



Family bathroom 5'2" x 8'6" (1.58 x 2.61)



Bedroom three 9'9" x 8'7" (2.99 x 2.63)



Outside

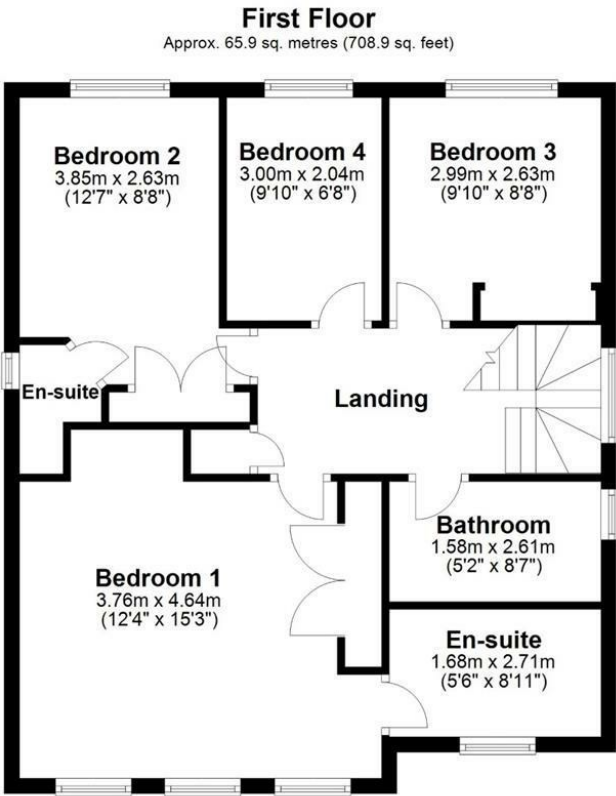
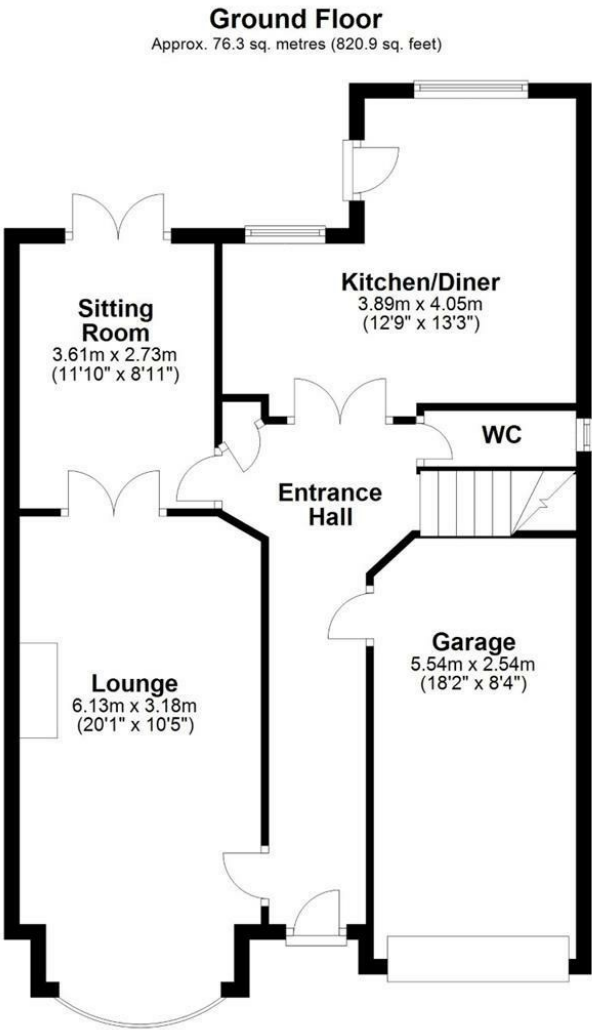


Bedroom four 9'10" x 6'8" (3.00 x 2.04)



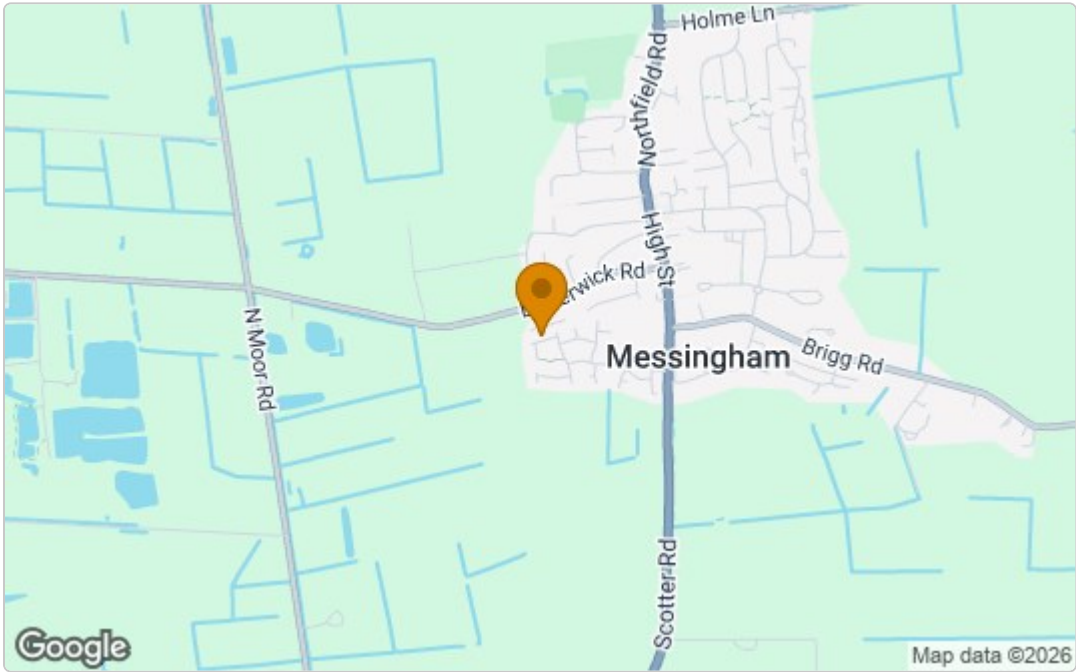


Floor Plan

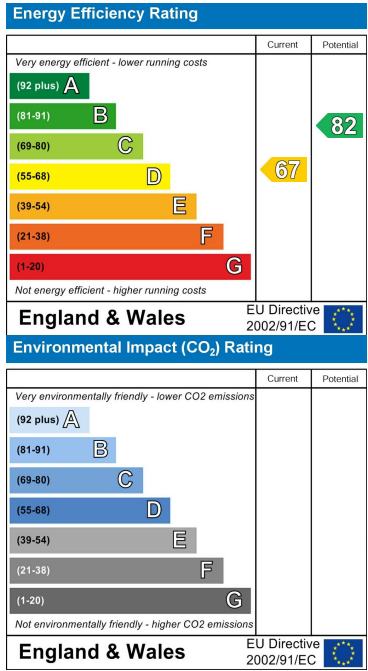


Total area: approx. 142.1 sq. metres (1529.8 sq. feet)

Area Map



Energy Efficiency Graph



These particulars, whilst believed to be accurate are set out as a general outline only for guidance and do not constitute any part of an offer or contract. Intending purchasers should not rely on them as statements of representation of fact, but must satisfy themselves by inspection or otherwise as to their accuracy. No person in this firm's employment has the authority to make or give any representation or warranty in respect of the property.