



5 Juno Close, Scunthorpe, DN17 2FP

£140,000

A well presented two bed semi detached home located in a quiet cul de sac at the top of Ashby. Great for first time buyers or investors it is neutrally decorated, modern throughout and ready to move straight into!

The property has a good size lounge, kitchen diner, two double bedrooms and bathroom. Outside there is a low maintenance secure rear garden and off road parking.

Available for viewings now, please call the office to book your appointment.



Entrance

Lounge 15'1" x 10'0" (4.61m x 3.06m)



Kitchen 13'5" x 7'9" (4.10m x 2.37m)



Downstairs W.C

Landing



Bathroom 7'4" x 5'10" (2.24m x 1.80m)



Outside



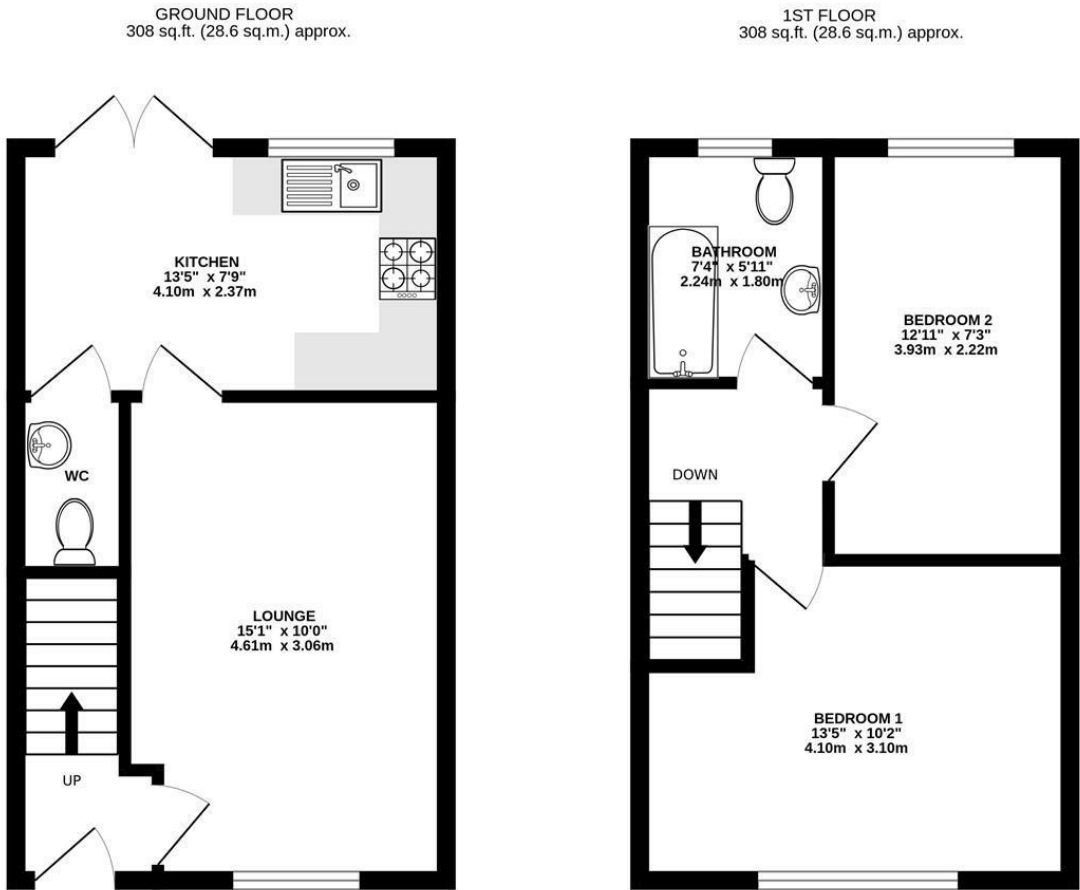
Bedroom one 13'5" x 10'2" (4.10m x 3.10m)



Bedroom two 12'10" x 7'3" (3.93m x 2.22m)



Floor Plan



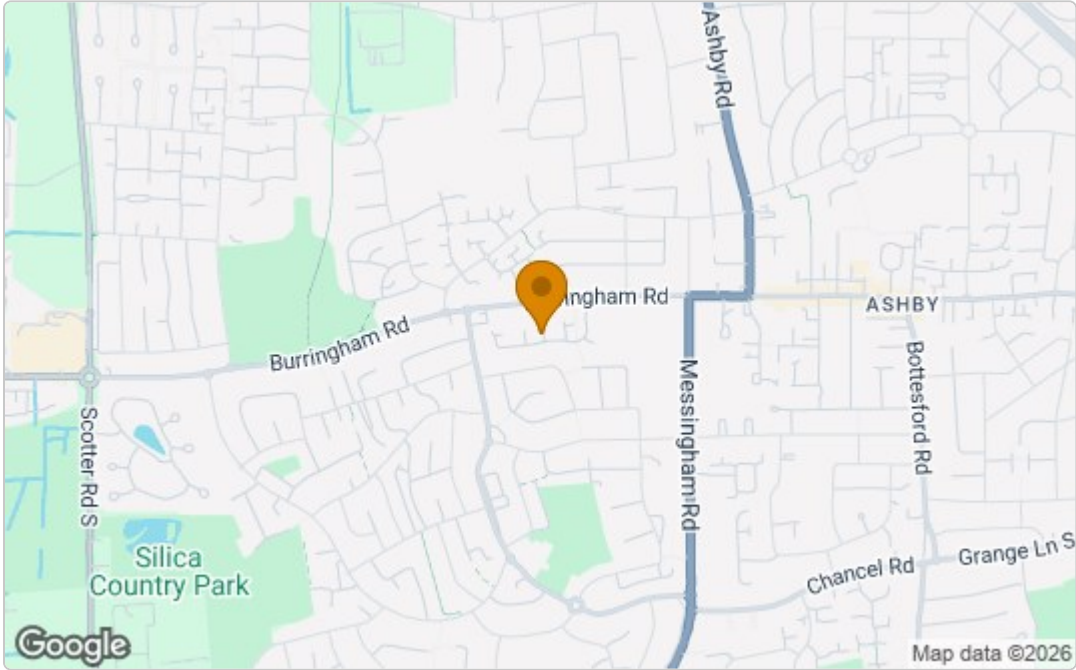
TOTAL FLOOR AREA : 616 sq.ft. (57.2 sq.m.) approx.

Whilst every attempt has been made to ensure the accuracy of the floorplan contained here, measurements of doors, windows, rooms and any other items are approximate and no responsibility is taken for any error, omission or mis-statement. This plan is for illustrative purposes only and should be used as such by any prospective purchaser. The services, systems and appliances shown have not been tested and no guarantee as to their operability or efficiency can be given.

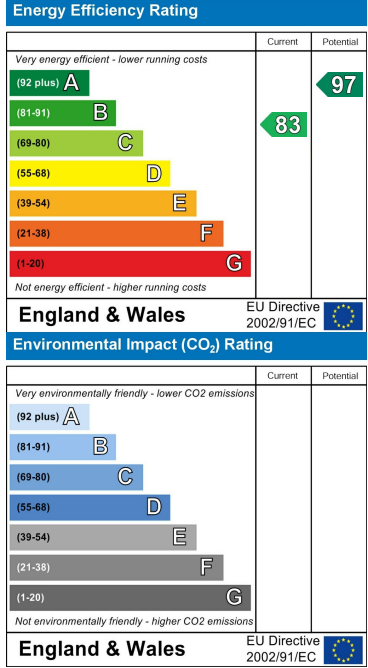
Made with Metropix 6/2025



Area Map



Energy Efficiency Graph



These particulars, whilst believed to be accurate are set out as a general outline only for guidance and do not constitute any part of an offer or contract. Intending purchasers should not rely on them as statements of representation of fact, but must satisfy themselves by inspection or otherwise as to their accuracy. No person in this firms employment has the authority to make or give any representation or warranty in respect of the property.