



36 Ennerdale Lane, Scunthorpe, DN16 2RW

£315,000

Quite possibly the perfect well rounded family home. The Kingston design by Keigar Homes has four double bedrooms, two bathrooms, a proper hall way, generous lounge and that open plan living kitchen diner that's perfect for modern family life. There's also a utility and w.c., secure garden and a garage, all immaculately maintained inside and out. This area has also become increasingly sought after from families, there's a real community feel and school catchments are also very popular.

Available for viewings now, please call to book your appointment.

Entrance hall



Lounge 15'6" x 11'0" (4.73 x 3.37)



Kitchen diner 25'9" x 13'1" (7.87 x 4.00)



Sitting room 11'10" x 8'10" (3.62 x 2.71)

Utility room 6'0" x 6'0" (1.84 x 1.83)



W.C.

Landing

Bedroom one 13'10" x 11'0" (4.24 x 3.37)



En-suite



Bedroom two 14'9" x 13'6" (4.50 x 4.13)



Bedroom three 11'10" x 10'0" (3.62 x 3.06)



Bedroom four 10'3" x 8'0" (3.13 x 2.46)



Family bathroom 11'1" x 6'0" (3.38 x 1.83)



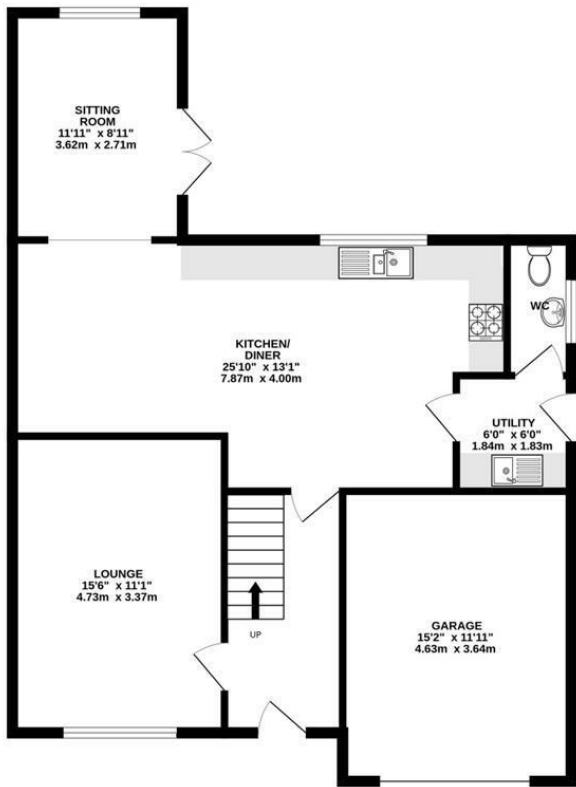
Garage

Outside

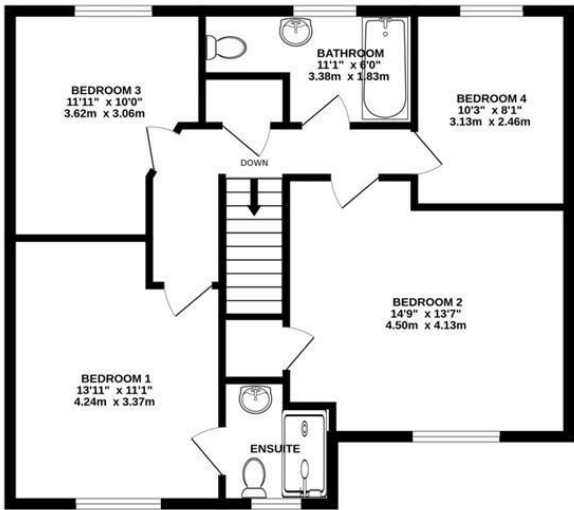


Floor Plan

GROUND FLOOR
888 sq.ft. (82.5 sq.m.) approx.



1ST FLOOR
709 sq.ft. (65.8 sq.m.) approx.

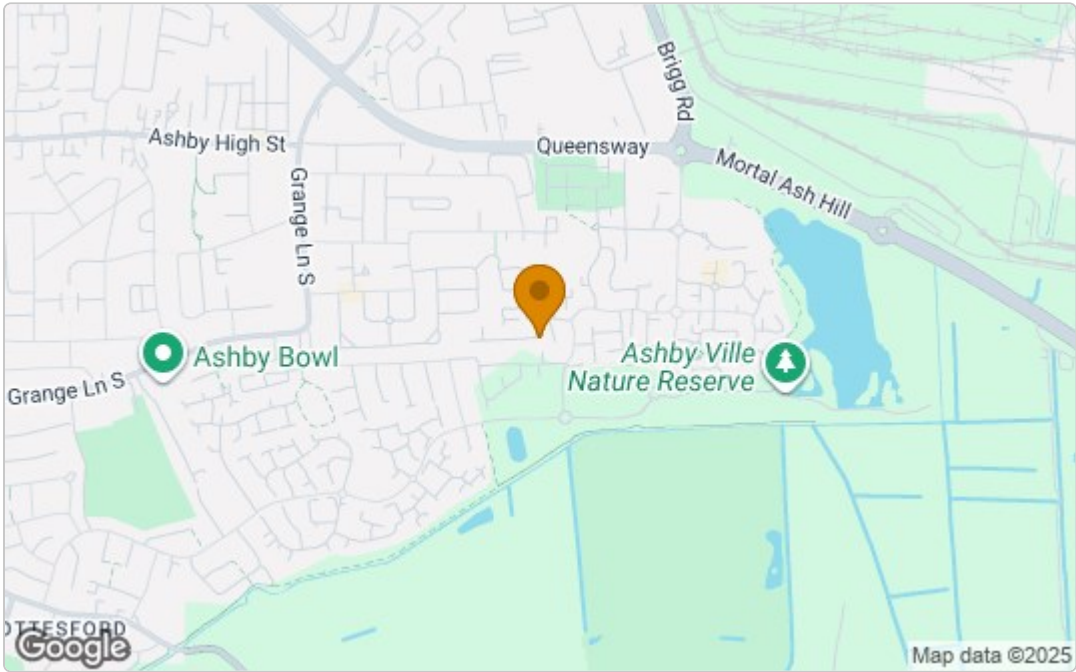


TOTAL FLOOR AREA : 1597 sq.ft. (148.3 sq.m.) approx.

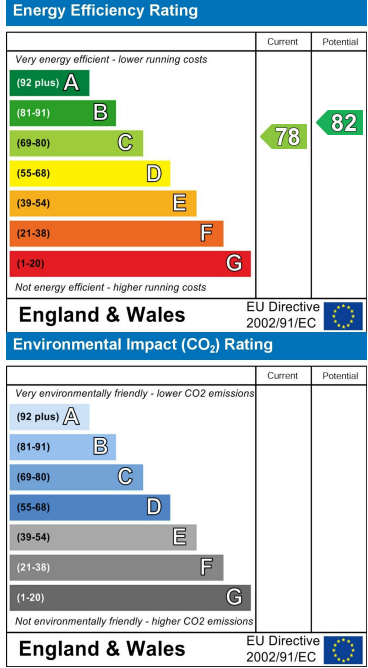
Whilst every attempt has been made to ensure the accuracy of the floorplan contained here, measurements of doors, windows, rooms and any other items are approximate and no responsibility is taken for any error, omission or mis-statement. This plan is for illustrative purposes only and should be used as such by any prospective purchaser. The services, systems and appliances shown have not been tested and no guarantee as to their operability or efficiency can be given.
Made with Metropix ©2025



Area Map



Energy Efficiency Graph



These particulars, whilst believed to be accurate are set out as a general outline only for guidance and do not constitute any part of an offer or contract. Intending purchasers should not rely on them as statements of representation of fact, but must satisfy themselves by inspection or otherwise as to their accuracy. No person in this firm's employment has the authority to make or give any representation or warranty in respect of the property.