



Linwood Sherwood Vale, Scunthorpe, DN15 7EB

£215,000

On an elevated plot this traditional bay fronted four bedroom semi detached house in a popular and sought after spot in Scunthorpe. The property itself is a great size split over three floors with three reception rooms to the ground floor and four good size bedrooms over the first and second floor. There is also a kitchen and two bathrooms making a great family home. The property has steps up to the house itself, off road parking and a garage at the front and the rear garden that is on a split level with patio area and lawned section. For further information and to organise a viewing, please get in touch.



Entrance hall

Lounge



Sitting room



Kitchen



Conservatory



W.C.

Landing

Bedroom one



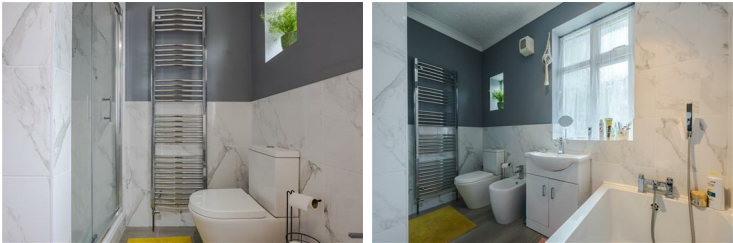
Bedroom two



Bedroom three



Bathroom



Landing

Bedroom four



Shower room



Outside

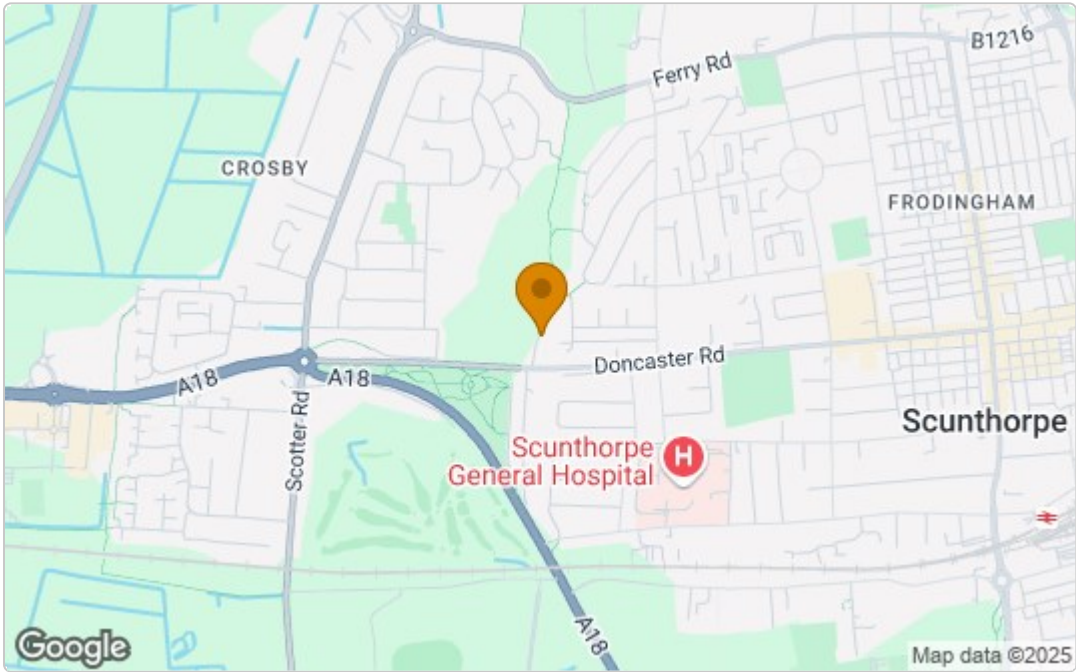




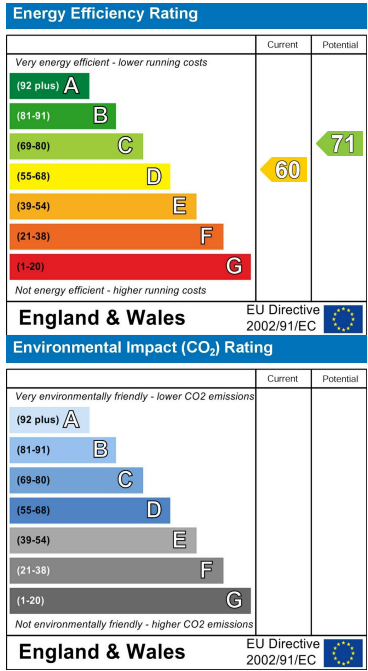
Floor Plan



Area Map



Energy Efficiency Graph



These particulars, whilst believed to be accurate are set out as a general outline only for guidance and do not constitute any part of an offer or contract. Intending purchasers should not rely on them as statements of representation of fact, but must satisfy themselves by inspection or otherwise as to their accuracy. No person in this firms employment has the authority to make or give any representation or warranty in respect of the property.