



16 Hillcrest Drive, Scunthorpe, DN15 9HL

£290,000

An incredible opportunity to own a family home in one of Burton upon Stathers best positions, tucked away at the end of a cul de sac with a south west facing plot looking out over the Trent Valley.

This detached home has three bedrooms upstairs with a w.c. and a flexible ground floor with four reception rooms with a potential to have one of these as a bedroom. And an open plan kitchen diner, with lots of the rooms making the most of the view. The gardens are a nice size with ample parking and a double garage at the front with a lawned rear garden.

Available to buy with no chain this is a rare chance to get a property with this view.



Entrance



Conservatory 20'2" x 12'10" (6.17 x 3.92)



Utility 10'4" x 5'10" (3.16 x 1.78)

Landing

Bedroom one 12'11" x 10'11" (3.96 x 3.34)



Lounge 21'8" x 12'2" (6.61 x 3.71)



Bathroom 7'3" x 6'10" (2.23 x 2.09)



Bedroom two 13'8" x 10'4" (4.18 x 3.16)



Kitchen diner 16'1" x 14'7" (4.92 x 4.46)



Bedroom three 12'2" x 8'6" (3.71 x 2.60)



Office 10'10" x 8'0" (3.32 x 2.46)

Bedroom four 12'2" x 8'6" (3.71 x 2.60)



Upstairs W.C.



Outside

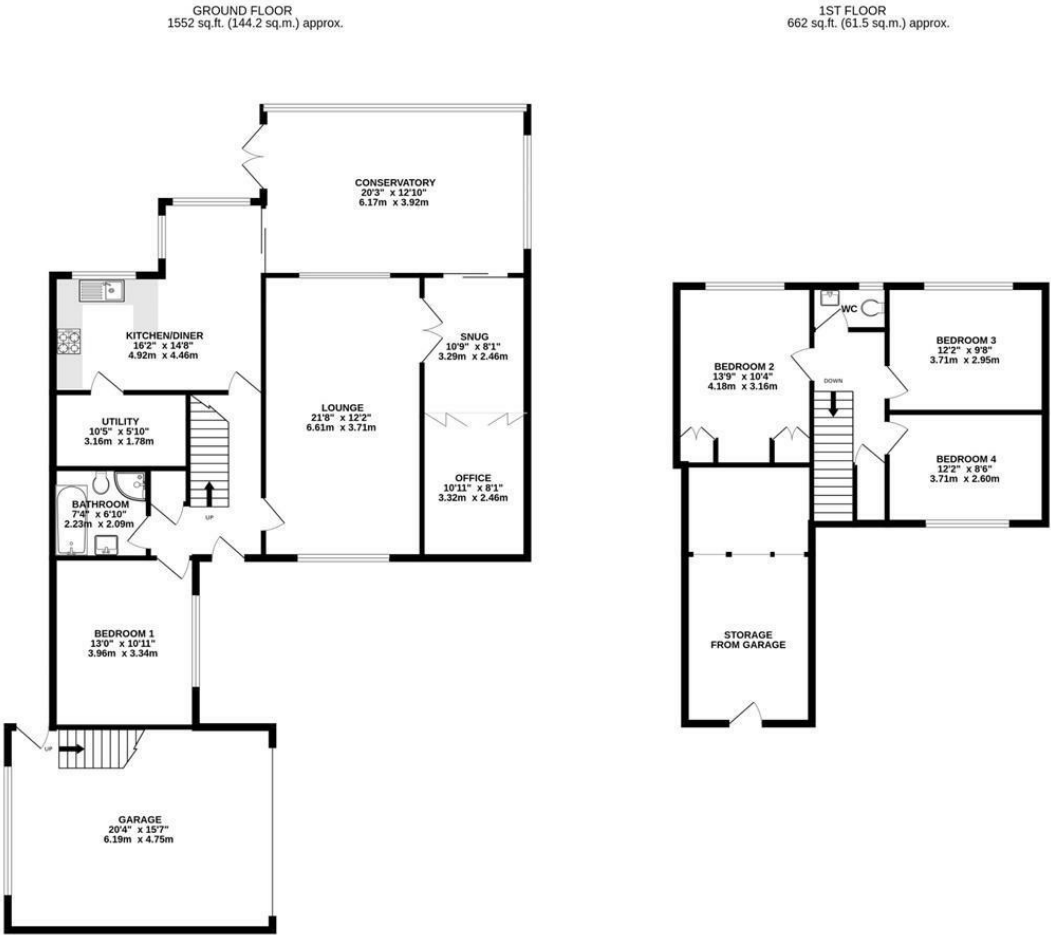


Garage 20'3" x 15'7" (6.19 x 4.75)

Snug 10'9" x 8'0" (3.29 x 2.46)



Floor Plan



TOTAL FLOOR AREA: 2214 sq.ft. (205.7 sq.m.) approx.

Whilst every attempt has been made to ensure the accuracy of the floorplan contained here, measurements of doors, windows, rooms and any other items are approximate and no responsibility is taken for any error, omission or mis-statement. This plan is for illustrative purposes only and should be used as such by any prospective purchaser. The services, systems and appliances shown have not been tested and no guarantee as to their operability or efficiency can be given.

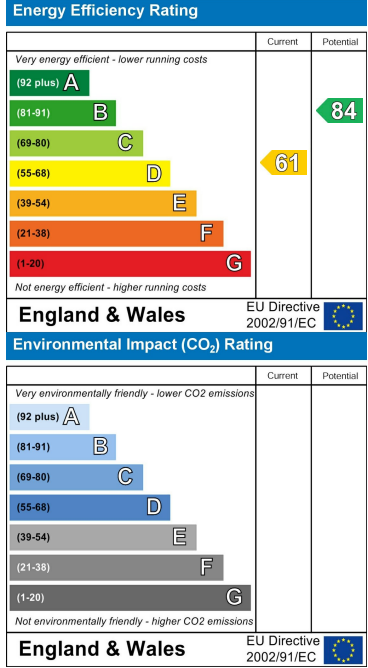
Made with Metropix ©2025



Area Map



Energy Efficiency Graph



These particulars, whilst believed to be accurate are set out as a general outline only for guidance and do not constitute any part of an offer or contract. Intending purchasers should not rely on them as statements of representation of fact, but must satisfy themselves by inspection or otherwise as to their accuracy. No person in this firms employment has the authority to make or give any representation or warranty in respect of the property.