



22 Stuart Close, Scunthorpe, DN17 2RL

£170,000

Sat in a quiet Cul de sac position and on a great size plot, this one bed bungalow is offered with no chain and available for viewings now! The property comprises of an entrance hall, lounge leading through in to dining room, modern kitchen, one double bedroom and a bathroom with four piece suite. Outside there is off road parking for a couple of cars, a single garage and a good size rear garden. To book in for a viewing, give us a call!

Entrance hall

Kitchen 10'5" x 8'9" (3.18 x 2.67)



Lounge 13'9" x 8'11" (4.20 x 2.74)



Dining room 13'6" x 11'8" (4.14 x 3.57)



Bedroom one 11'8" x 9'5" (3.57 x 2.89)

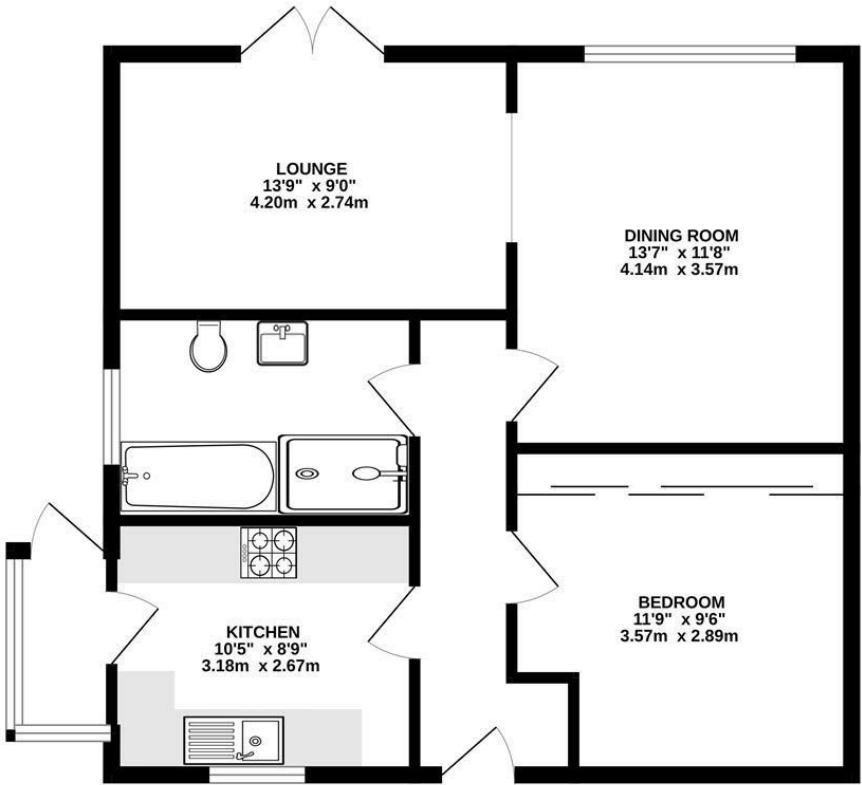


Bathroom



Outside

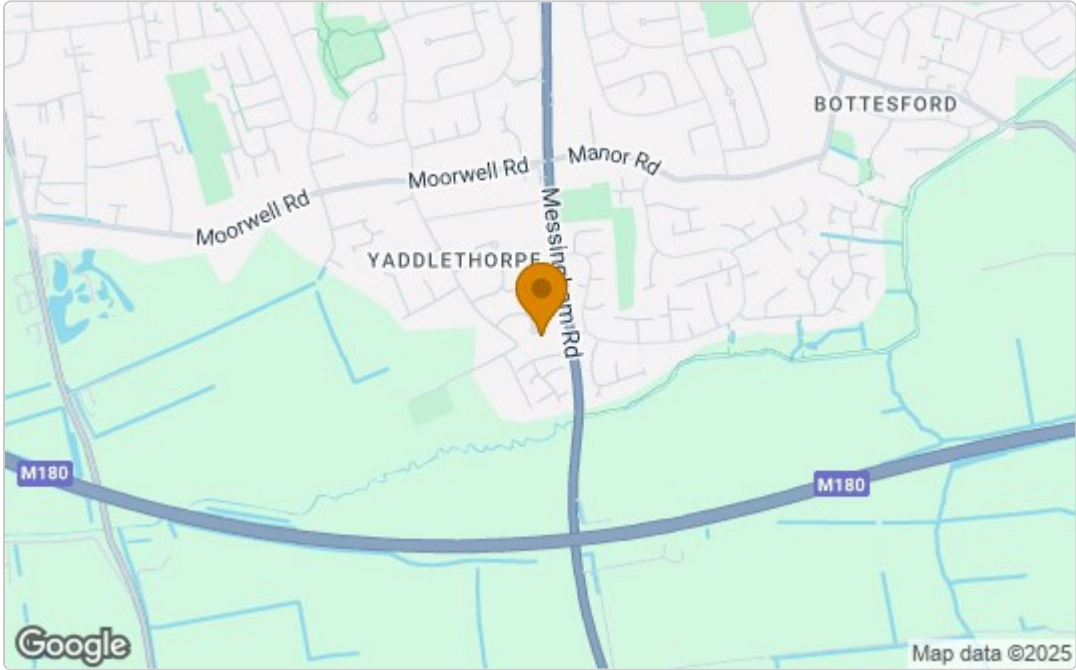
GROUND FLOOR
654 sq.ft. (60.8 sq.m.) approx.



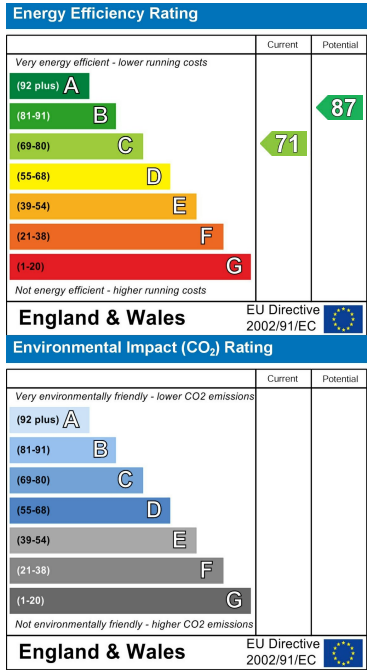
TOTAL FLOOR AREA : 654 sq.ft. (60.8 sq.m.) approx.
Whilst every attempt has been made to ensure the accuracy of the floorplan contained here, measurements of doors, windows, rooms and any other items are approximate and no responsibility is taken for any error, omission or mis-statement. This plan is for illustrative purposes only and should be used as such by any prospective purchaser. The services, systems and appliances shown have not been tested and no guarantee as to their operability or efficiency can be given.
Made with Metropix ©2025



Area Map



Energy Efficiency Graph



These particulars, whilst believed to be accurate are set out as a general outline only for guidance and do not constitute any part of an offer or contract. Intending purchasers should not rely on them as statements of representation of fact, but must satisfy themselves by inspection or otherwise as to their accuracy. No person in this firm's employment has the authority to make or give any representation or warranty in respect of the property.