



### 1 The Steadings, Scunthorpe, DN15 8XP

£279,950

A really well presented three bedroom detached family home in the lovely village of Flixborough. Located in a quiet cul de sac this home consists of an entrance hall, W.C, lounge, modern kitchen diner with separate utility area. Upstairs there are three double bedrooms the master having an en suite and a further shower room off the landing. Outside there is a low maintenance rear garden, a detached garage and off road parking. Available for viewings now please call to book your appointment.



Entrance Hall

Kitchen Diner 19'1" x 9'10" (5.84 x 3.00)



Lounge 16'3" x 11'11" (4.96 x 3.64)



W.C.

Utility

First Floor Landing

Bedroom One 19'1" x 9'10" (5.83 x 3.02)



En Suite 6'3" x 5'5" (1.92 x 1.67)



Bedroom Two 10'9" x 8'5" (3.29 x 2.57)



Bedroom Three 8'5" x 8'4" (2.57 x 2.55)

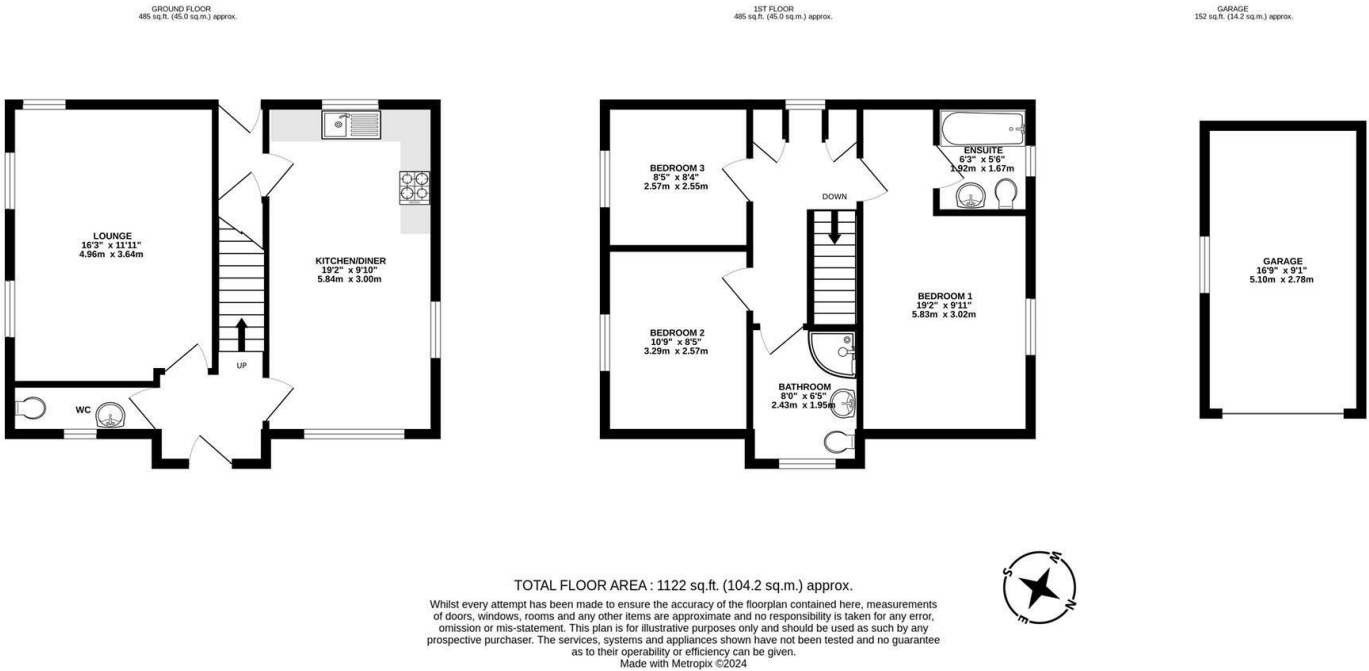
Family Bathroom



Outside



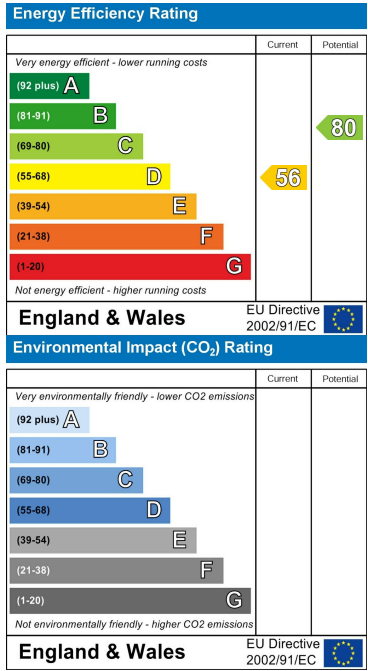
Floor Plan



Area Map



Energy Efficiency Graph



These particulars, whilst believed to be accurate are set out as a general outline only for guidance and do not constitute any part of an offer or contract. Intending purchasers should not rely on them as statements of representation of fact, but must satisfy themselves by inspection or otherwise as to their accuracy. No person in this firms employment has the authority to make or give any representation or warranty in respect of the property.