



EA
BEN
CADE



21 Orchid Rise, Scunthorpe, DN15 7AN

£350,000

Offered with no onward chain and with an attractive reduced price this extended detached family home positioned well in a private spot set back from the road with driveway behind electric gates, in a popular location close to Scunthorpe General Hospital and the train station making it an ideal position for commuters. The property itself has a modern and tasteful interior with four bedrooms, three reception rooms and the bonus of a double garage with loft room above. A lot of house for the money on this one! Viewings are by appointment only so for further information or to organise your appointment, please get in touch.

Entrance Hall 11'7" x 8'1" (3.54 x 2.47)

Lounge 16'6" x 11'11" (5.04 x 3.65)



Kitchen 12'2" x 11'3" (3.72 x 3.44)



Additional Photographs

Additional Photograph

Dining Area & Sun Room 21'9" x 11'11" (6.63 x 3.65)



Utility 5'5" x 5'2" (1.66 x 1.60)

Downstairs W.C. 5'9" x 2'9" (1.77 x 0.86)

Hallway 15'1" x 3'1" (4.60 x 0.95)

Sitting Room 15'9" x 14'1" (4.82 x 4.31)



Additional Photographs



First Floor Landing 11'10" x 4'8" (3.63 x 1.44)

Bedroom One 11'5" x 12'0" (3.49 x 3.66)



En Suite 11'6" x 5'1" (3.51 x 1.56)



Shower Room 7'8" x 6'5" (2.35 x 1.98)



Double Garage 22'3" x 20'3" (6.79 x 6.18)



Bedroom Two 12'0" x 8'11" (3.66 x 2.74)



Garage Loft Space 21'9" x 12'9" (6.65 x 3.90)



Bedroom Three 8'10" x 8'1" (2.71 x 2.47)



Outside



Bedroom Four 8'10" x 6'2" (2.71 x 1.89)

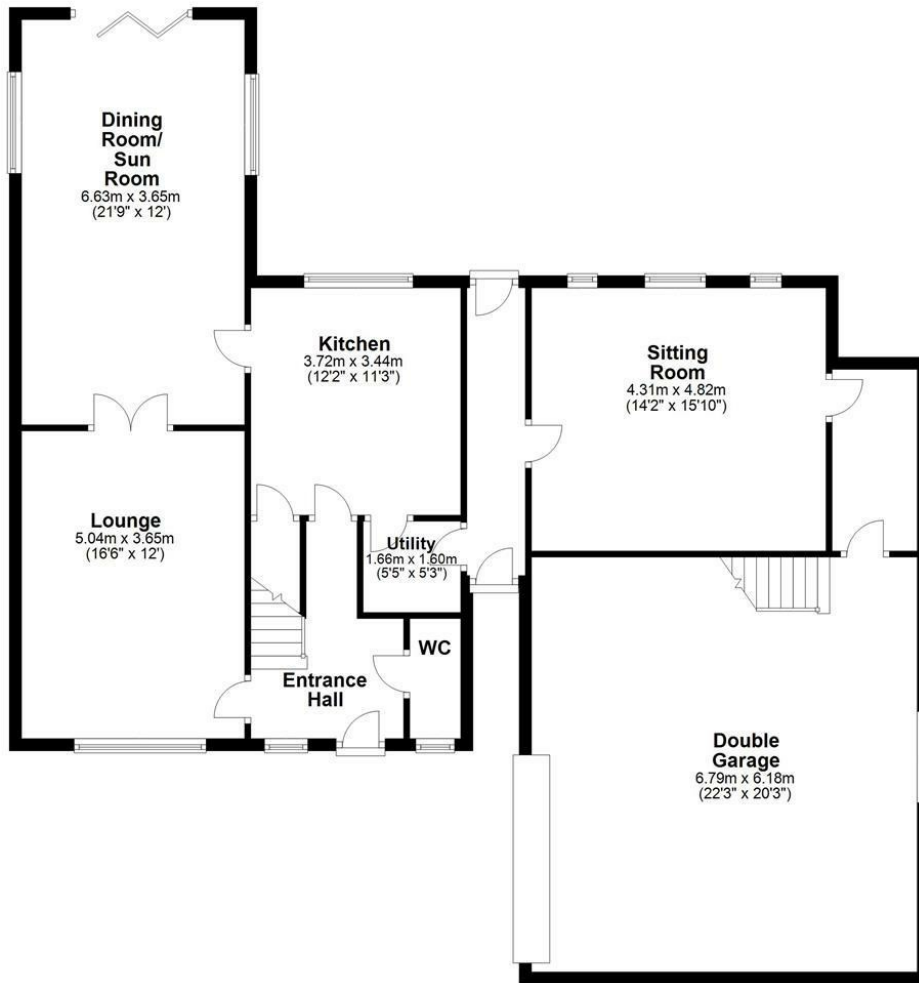
Additional Photographs



Floor Plan

Ground Floor

Approx. 144.3 sq. metres (1553.8 sq. feet)

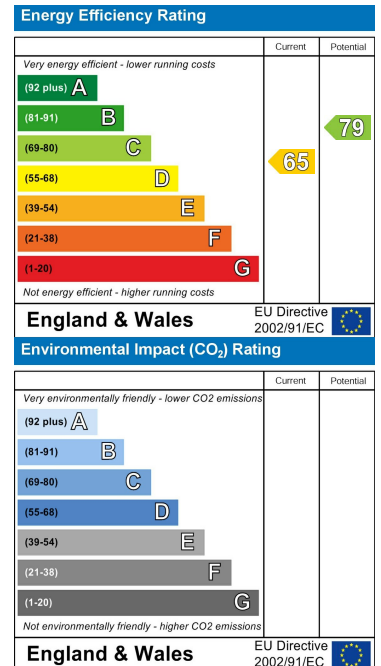


Total area: approx. 226.2 sq. metres (2434.4 sq. feet)

Area Map



Energy Efficiency Graph



These particulars, whilst believed to be accurate are set out as a general outline only for guidance and do not constitute any part of an offer or contract. Intending purchasers should not rely on them as statements of representation of fact, but must satisfy themselves by inspection or otherwise as to their accuracy. No person in this firm's employment has the authority to make or give any representation or warranty in respect of the property.