



EA  
BEN  
CADE



## Springhead Farm Close, Plot 3 High Street, Scunthorpe, DN15 8RL

£385,000

These stunning homes are built by award winning builders Qudos Homes, their latest exclusive development of just three homes all with open field views really are special. Approached over a private drive these homes sit back from the roadside in a private position. This plot has the benefit ample parking and a detached double garage. Internally the specification and finish are of real quality, underfloor heating through the ground floor and quality appliances and fittings throughout. Please see the floor plan for layout details, if you require further information or would like to book a viewing on site get in touch, we'd love to help.

## Hall



## Landing

### Bedroom one



### En suite

### Bathroom



## Open plan kitchen diner



## Lounge



### Bedroom two

### Bedroom three

### Bedroom four

### Double garage

### Outside front

### Outside rear

All images are used for illustrative purposes. In some cases it may not be possible to show photographs of the exact property, and we will utilise show home photography or photographs of another similar property. Images are for guidance.

## Study/playroom

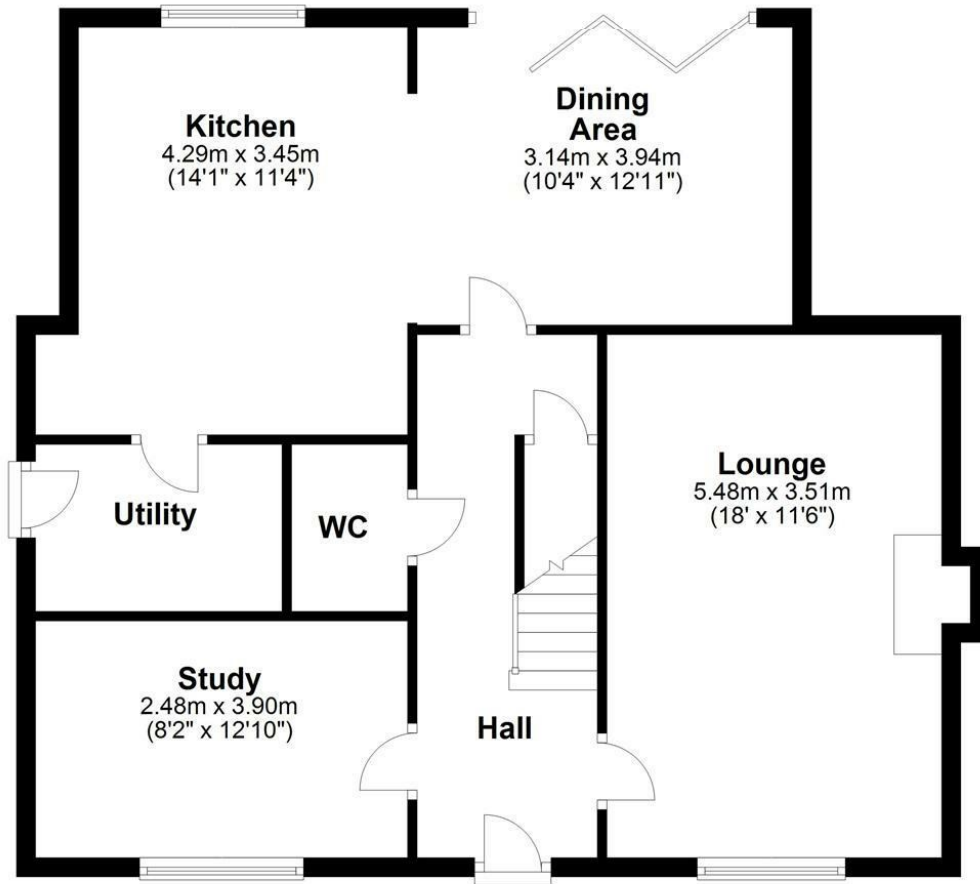


## Utility

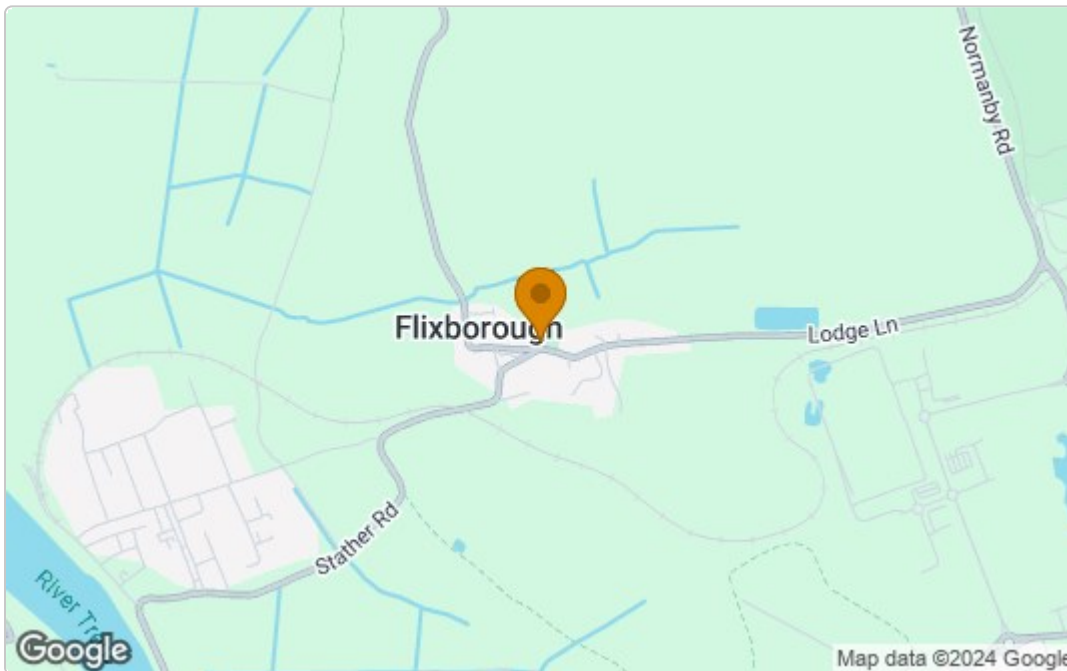
## W.C.

### Ground Floor

Approx. 76.3 sq. metres (821.4 sq. feet)



### Area Map



### Energy Efficiency Graph

Energy Efficiency Rating		Current	Potential
Very energy efficient - lower running costs			
(92 plus) <b>A</b>			
(81-91) <b>B</b>			
(69-80) <b>C</b>			
(55-68) <b>D</b>			
(39-54) <b>E</b>			
(21-38) <b>F</b>			
(1-20) <b>G</b>			
Not energy efficient - higher running costs			
<b>England &amp; Wales</b>		EU Directive 2002/91/EC	
Environmental Impact (CO <sub>2</sub> ) Rating		Current	Potential
Very environmentally friendly - lower CO <sub>2</sub> emissions			
(92 plus) <b>A</b>			
(81-91) <b>B</b>			
(69-80) <b>C</b>			
(55-68) <b>D</b>			
(39-54) <b>E</b>			
(21-38) <b>F</b>			
(1-20) <b>G</b>			
Not environmentally friendly - higher CO <sub>2</sub> emissions			
<b>England &amp; Wales</b>		EU Directive 2002/91/EC	

These particulars, whilst believed to be accurate are set out as a general outline only for guidance and do not constitute any part of an offer or contract. Intending purchasers should not rely on them as statements of representation of fact, but must satisfy themselves by inspection or otherwise as to their accuracy. No person in this firm's employment has the authority to make or give any representation or warranty in respect of the property.