



EA  
BEN  
CADE



23 Walker Drive, Scunthorpe, DN15 9PW

£160,000

Fantastic semi detached bungalow on a lovely plot currently fitted with accessible entry should you want it. Sat in a quiet cul de sac spot that is still very convenient for local amenities, outside the garden is south facing too with a landscaped garden and a detached garage. Inside we have two double bedrooms, a lounge, kitchen, wet room and it's well presented throughout with clean decor. Available with no chain this is a simple purchase, ideal as a downsize, please get in touch to book a viewing.

Entrance

Lounge 13'5" x 10'8" (4.10 x 3.27 )



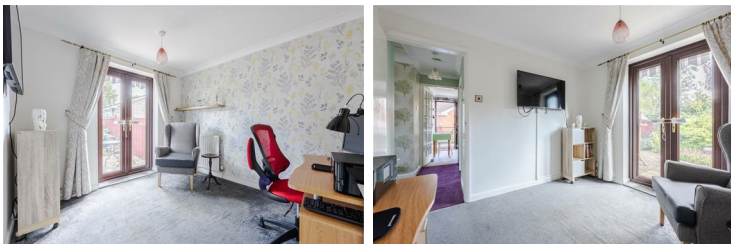
Kitchen 11'0" x 10'1" (3.36 x 3.09 )



Bedroom one 10'8" x 10'4" (3.27 x 3.16 )



Bedroom two 10'1" x 9'1" (3.09 x 2.79)



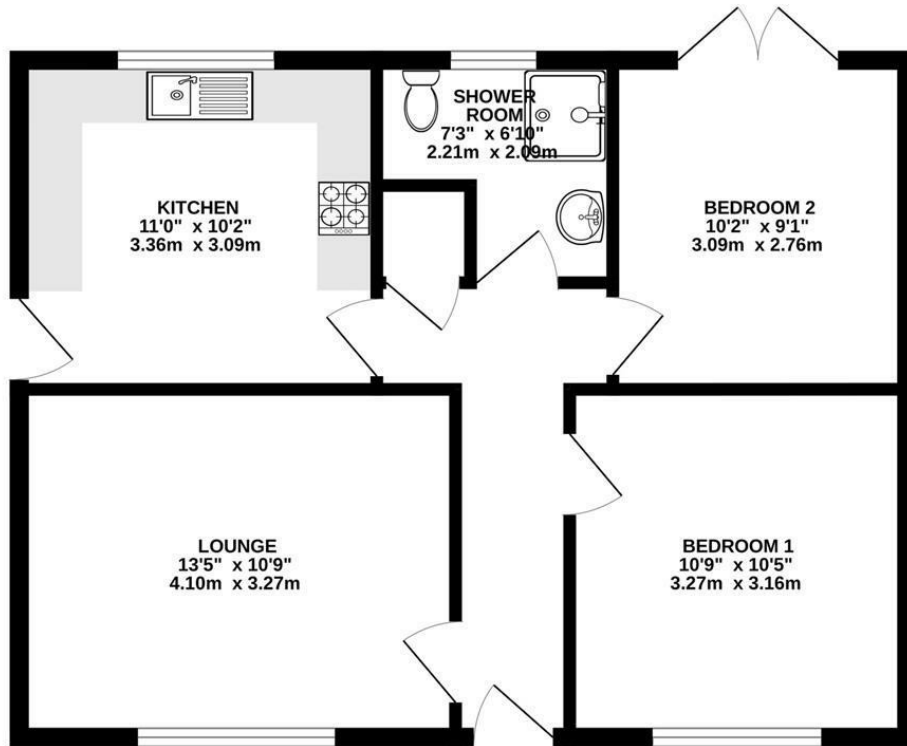
Shower room 7'3" x 6'10" (2.21 x 2.09)



Outside



GROUND FLOOR  
571 sq.ft. (53.0 sq.m.) approx.

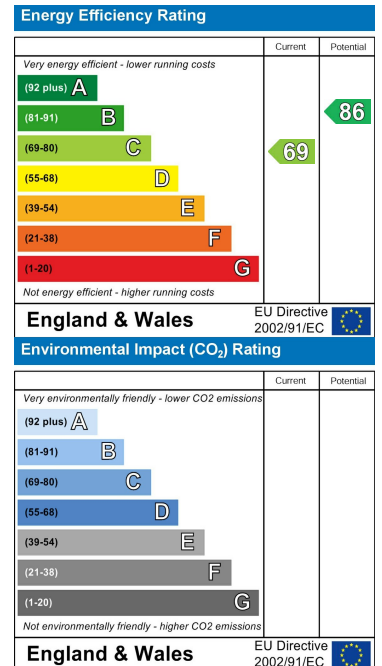


TOTAL FLOOR AREA: 571 sq.ft. (53.0 sq.m.) approx.  
Whilst every attempt has been made to ensure the accuracy of the floorplans contained here, measurements of doors, windows, rooms and any other items are approximate and no responsibility is taken for any error, omission or mis-statement. This plan is for illustrative purposes only and should be used as such by any prospective purchaser. The services, systems and appliances shown have not been tested and no guarantee as to their operability or efficiency can be given.  
Made with Metropix ©2024.

Area Map



Energy Efficiency Graph



These particulars, whilst believed to be accurate are set out as a general outline only for guidance and do not constitute any part of an offer or contract. Intending purchasers should not rely on them as statements of representation of fact, but must satisfy themselves by inspection or otherwise as to their accuracy. No person in this firm's employment has the authority to make or give any representation or warranty in respect of the property.