



7 Hawthorne Way, Scunthorpe, DN17 3HA

£269,950

Located in the village of Althorpe is this four bedroom detached family home. Downstairs there is an entrance hall, a kitchen, two reception rooms, and a spacious conservatory overlooking the rear garden. Upstairs there are four double bedrooms two of which have en suite bathrooms and a further family bathroom. Outside there is a garden laid with turf, patio area and two seating areas one which is undercover. To the front of the property there is off road parking and an integral garage. Available for viewings now please call the office to book your appointment.

Entrance hall

Lounge



En suite



Dining room

Kitchen



Bedroom two



Conservatory



En suite

Bedroom three



Landing

Bedroom one



Bedroom four



Bathroom



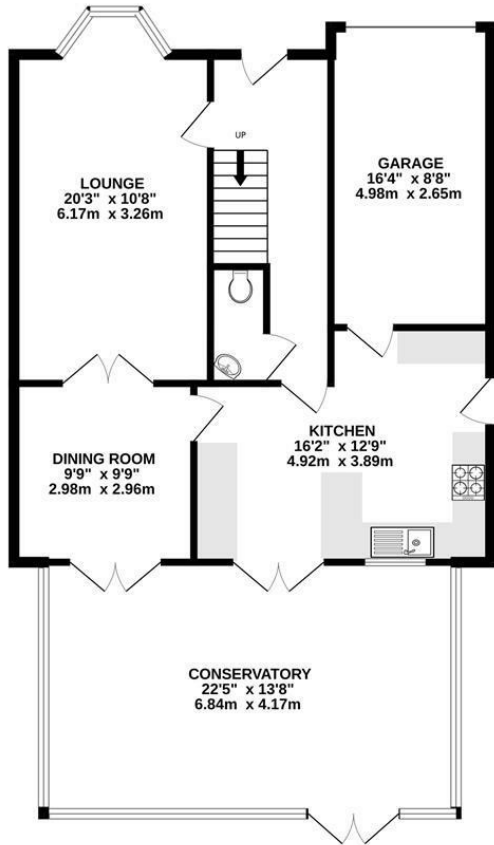
Garage

Outside

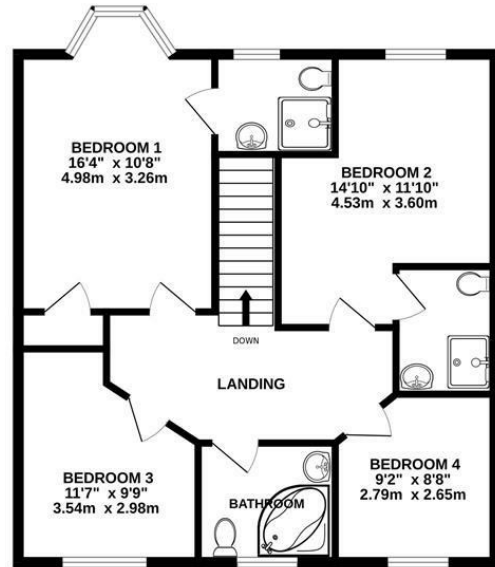


# Floor Plan

GROUND FLOOR  
1046 sq.ft. (97.2 sq.m.) approx.



1ST FLOOR  
726 sq.ft. (67.4 sq.m.) approx.



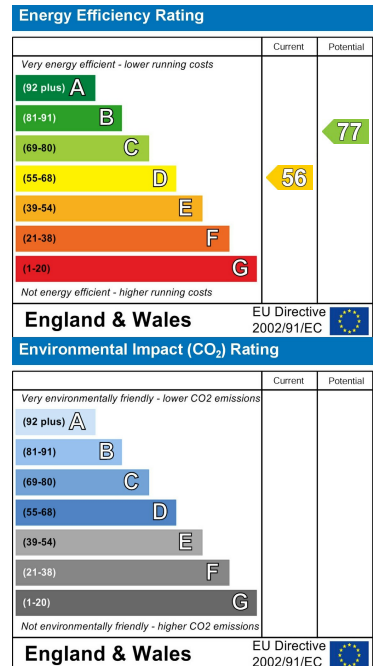
TOTAL FLOOR AREA: 1772 sq.ft. (164.7 sq.m.) approx.

Whilst every attempt has been made to ensure the accuracy of the floorplan contained here, measurements of doors, windows, rooms and any other items are approximate and no responsibility is taken for any error, omission or mis-statement. This plan is for illustrative purposes only and should be used as such by any prospective purchaser. The services, systems and appliances shown have not been tested and no guarantee as to their operability or efficiency can be given.  
Made with Metroplan ©2024

# Area Map



# Energy Efficiency Graph



These particulars, whilst believed to be accurate are set out as a general outline only for guidance and do not constitute any part of an offer or contract. Intending purchasers should not rely on them as statements of representation of fact, but must satisfy themselves by inspection or otherwise as to their accuracy. No person in this firm's employment has the authority to make or give any representation or warranty in respect of the property.