



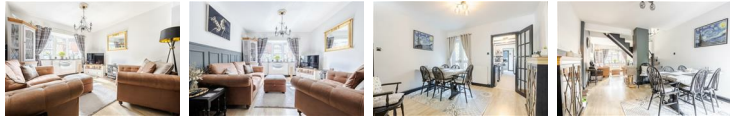
58 Victoria Road, Scunthorpe, DN16 2SA

£129,950

Incredibly good value semi detached home conveniently positioned close to Ashby. Really well presented throughout with clean decor and a very good layout, we have a spacious lounge diner with doors to the courtyard garden and to the kitchen. There is also a rear lobby, utility and w.c. making up the downstairs. Upstairs we have two double bedrooms with fitted storage and a bathroom, the gardens are also lovely with a courtyard area and then a surprisingly private and secure garden. Ideal for first time buyers in our opinion and ready to move straight into, please contact us to book.

Hall 5'10" x 6'0" (1.78 x 1.83)

Lounge diner 27'0" x 11'4" (8.24 x 3.47)



Kitchen 12'7" x 6'0" (3.85 x 1.83)



Utility W.C. 7'7" x 6'0" (2.32 x 1.83)



Utility W.C. 7'7" x 6'0" (2.32 x 1.83)



Landing

Bedroom one 10'8" x 10'8" (3.27 x 3.27)



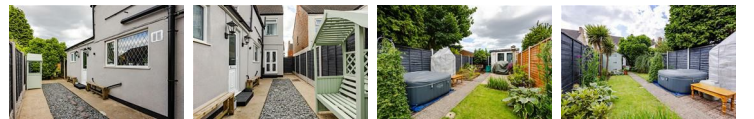
Bedroom two 12'4" x 8'1" (3.76 x 2.48)



Bathroom 12'7" x 6'0" (3.85 x 1.83)



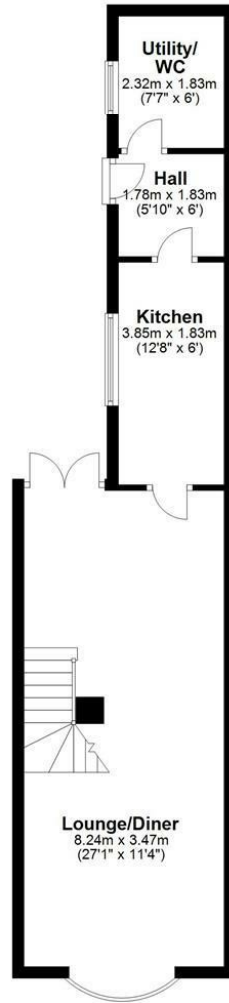
Outside



Floor Plan

Ground Floor

Approx. 43.9 sq. metres (473.0 sq. feet)

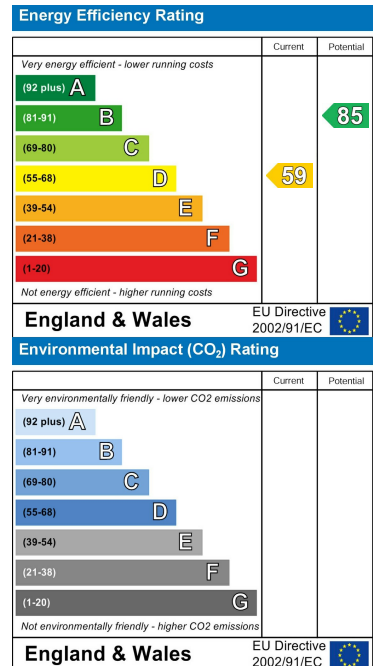


Total area: approx. 78.5 sq. metres (844.9 sq. feet)

Area Map



Energy Efficiency Graph



These particulars, whilst believed to be accurate are set out as a general outline only for guidance and do not constitute any part of an offer or contract. Intending purchasers should not rely on them as statements of representation of fact, but must satisfy themselves by inspection or otherwise as to their accuracy. No person in this firm's employment has the authority to make or give any representation or warranty in respect of the property.