



EA  
BEN  
CADE



27 Osprey Drive, Scunthorpe, DN16 3EZ

£84,995

Available with no chain we have this very affordable and low maintenance first time buy or investment property, located in the popular Lakeside area of Scunthorpe. Immaculately presented this property consists of a lobby, lounge, kitchen, one bedroom and a bathroom. Outside there is an allocated parking space and storage. Available for viewings now please call to book your appointment.

## Lobby

## Lounge



## Kitchen



## Bedroom



## Bathroom

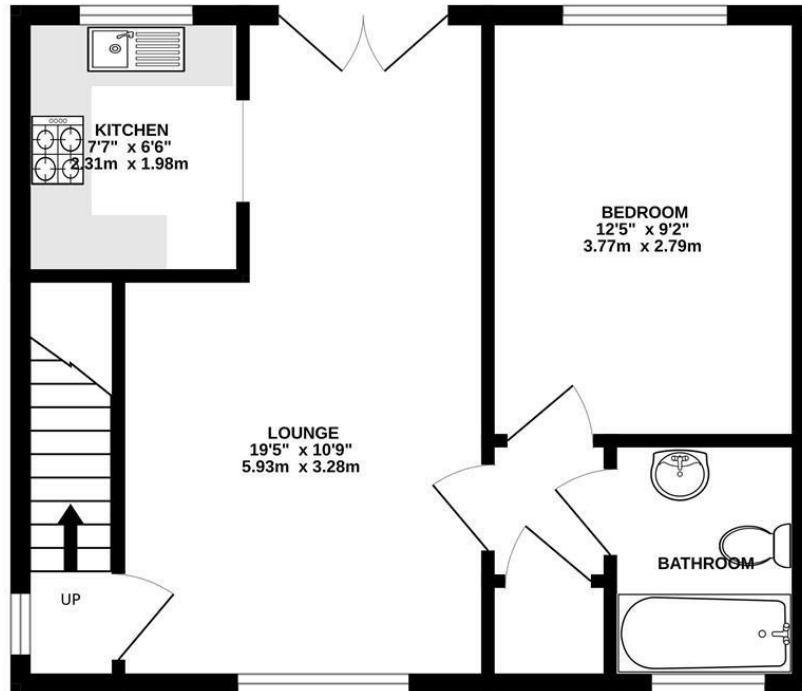


## Outside



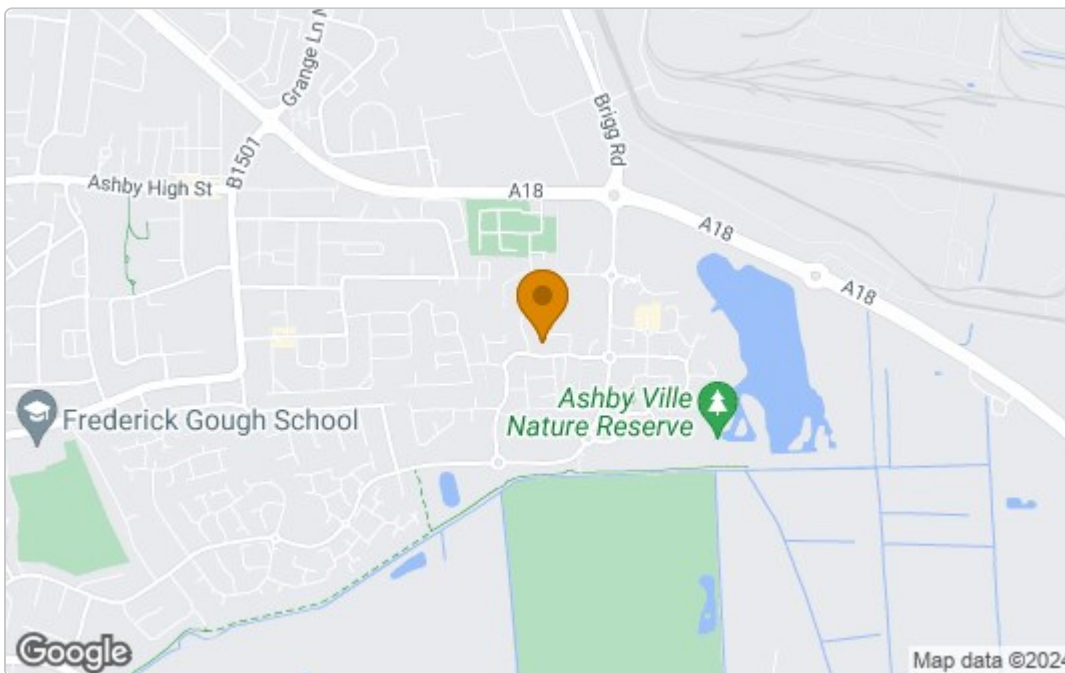
Single allocated parking space

GROUND FLOOR  
443 sq.ft. (41.1 sq.m.) approx.

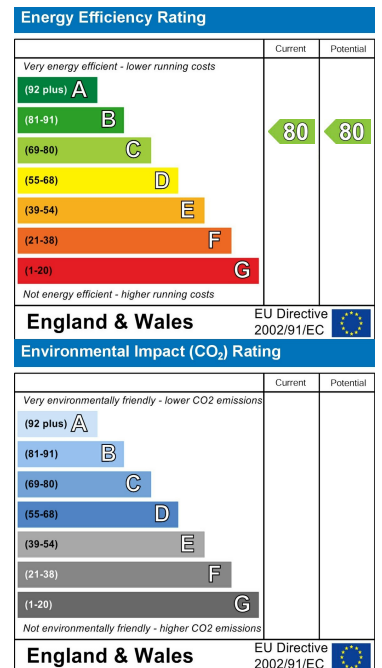


TOTAL FLOOR AREA : 443 sq.ft. (41.1 sq.m.) approx.  
Whilst every attempt has been made to ensure the accuracy of the floorplan contained here, measurements of doors, windows, rooms and any other items are approximate and no responsibility is taken for any error, omission or mis-statement. This plan is for illustrative purposes only and should be used as such by any prospective purchaser. The services, systems and appliances shown have not been tested and no guarantee as to their operability or efficiency can be given.  
Made with Metropix ©2024

Area Map



Energy Efficiency Graph



These particulars, whilst believed to be accurate are set out as a general outline only for guidance and do not constitute any part of an offer or contract. Intending purchasers should not rely on them as statements of representation of fact, but must satisfy themselves by inspection or otherwise as to their accuracy. No person in this firm's employment has the authority to make or give any representation or warranty in respect of the property.