



EA
BEN
CADE



46 Turnstone Drive, Scunthorpe, DN16 3GX

£125,000

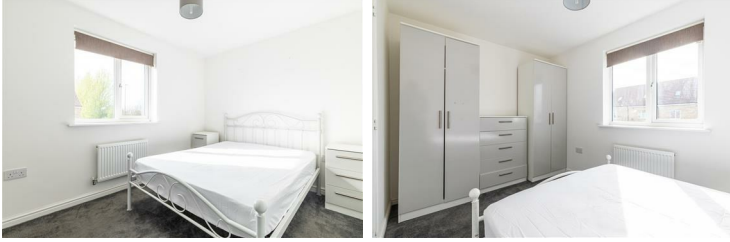
Offered with no onward chain, this two bed semi detached home is in the ever popular area of Lakeside, close to local amenities and perfect for first time buyers or a young family. Downstairs, it is neutrally decorated with an open plan living kitchen area along with a W.C. followed by French doors to the rear garden. Upstairs are two double bedrooms with a family bathroom. Outside is a rear garden with a low maintenance lawn and a parking spot at the front. Available for viewings, so please call the office to book your appointment.

Living Kitchen 22'10" x 12'1" (6.96 x 3.70)

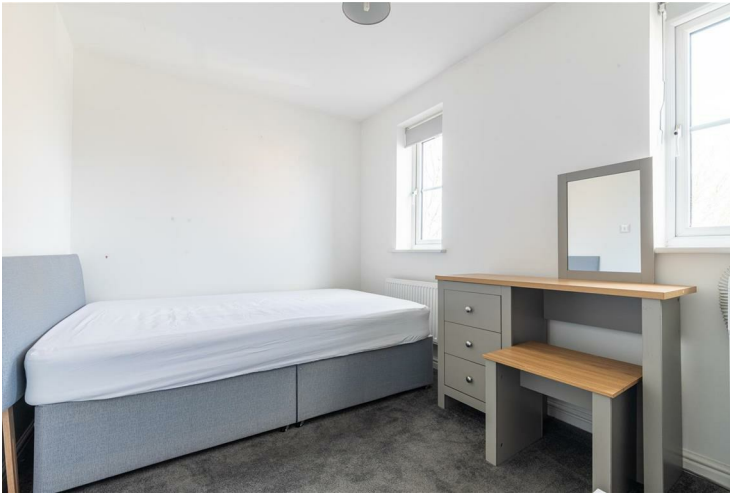


W.C.

Bedroom One 7'8" x 12'2" (2.35 x 3.72)



Bedroom Two 7'9" x 12'1" (2.38 x 3.70)



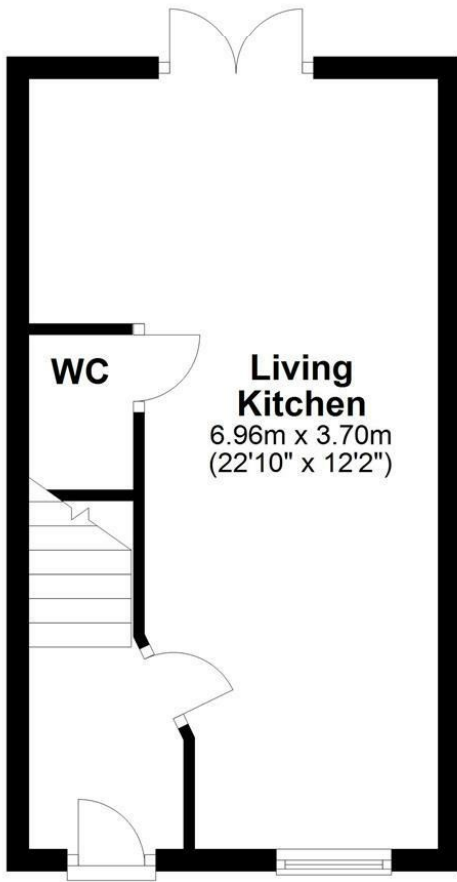
Bathroom 6'0" x 5'5" (1.85 x 1.67)



Outside

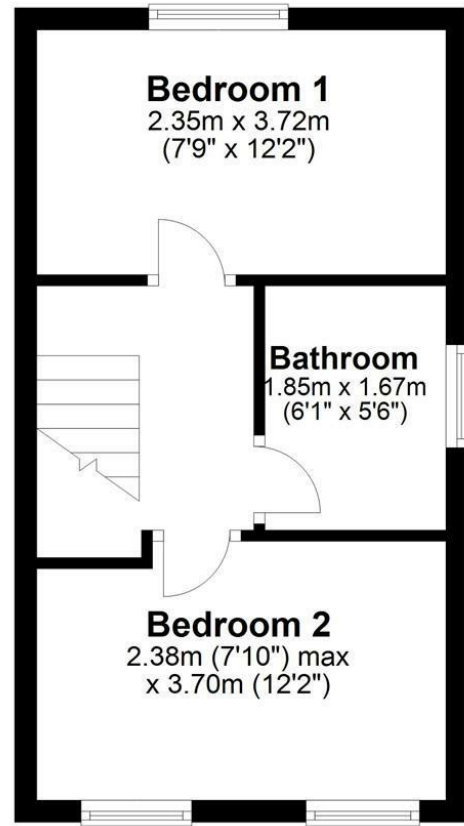
Ground Floor

Approx. 25.8 sq. metres (277.2 sq. feet)



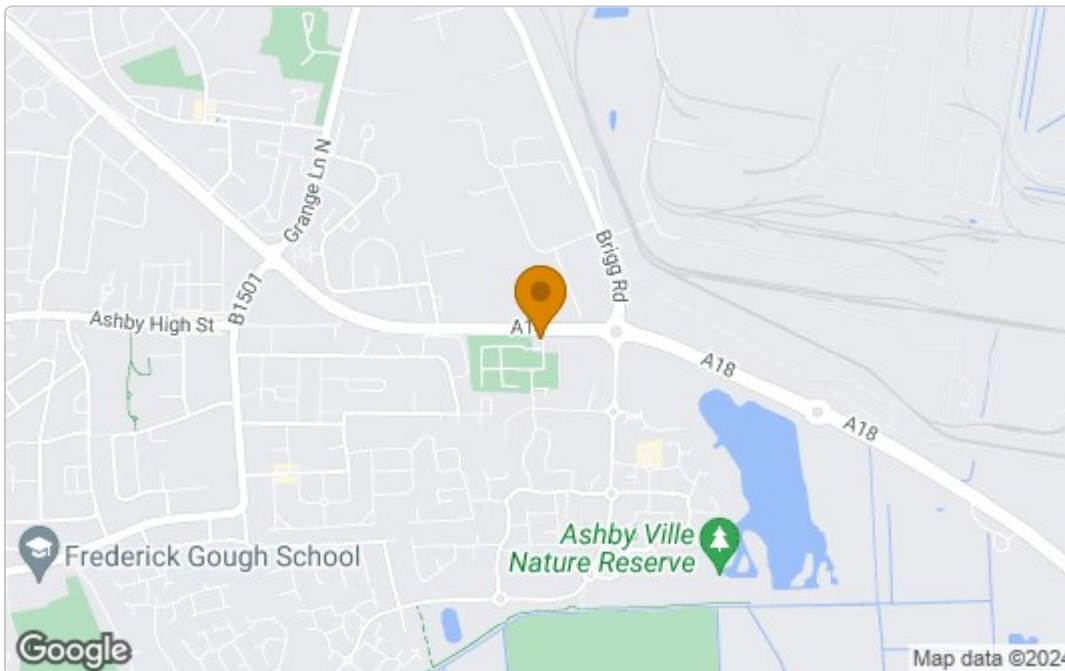
First Floor

Approx. 25.8 sq. metres (278.1 sq. feet)



Total area: approx. 51.6 sq. metres (555.3 sq. feet)

Area Map



Energy Efficiency Graph

Energy Efficiency Rating		Current	Potential
Very energy efficient - lower running costs			98
(92 plus) A			
(81-91) B		83	
(69-80) C			
(55-68) D			
(39-54) E			
(21-38) F			
(1-20) G			
Not energy efficient - higher running costs			
England & Wales		EU Directive 2002/91/EC	
Environmental Impact (CO ₂) Rating		Current	Potential
Very environmentally friendly - lower CO ₂ emissions			
(92 plus) A			
(81-91) B			
(69-80) C			
(55-68) D			
(39-54) E			
(21-38) F			
(1-20) G			
Not environmentally friendly - higher CO ₂ emissions			
England & Wales		EU Directive 2002/91/EC	

These particulars, whilst believed to be accurate are set out as a general outline only for guidance and do not constitute any part of an offer or contract. Intending purchasers should not rely on them as statements of representation of fact, but must satisfy themselves by inspection or otherwise as to their accuracy. No person in this firm's employment has the authority to make or give any representation or warranty in respect of the property.