

6 Huteson Lane, Scunthorpe, DN15 9JZ

£350,000

Immaculately presented spacious bungalow in a lovely quiet spot within the sought after Alkborough village. The plot and position are excellent, private with great a great garden, ample parking and a double garage at the back. Inside we have modern decor with updates to both the bathroom and the en suite on the principle bedroom. The layout of the bungalow is very flexible, currently four bedrooms and three reception rooms so it's bug enough to be a family home, but can easily be changed around.

Viewings are available by appointment, please get in touch to book.

Entrance hall



Bedroom one 16'3" x 9'6" (4.96 x 2.91)



En-Suite 6'10" x 5'2" (2.09 x 1.60)



Lounge 14'2" x 27'1" (4.33 x 8.28 )



Kitchen 9'9" x 11'5" (2.99 x 3.50)



Dining room 11'11" x 11'1" (3.64 x 3.40)



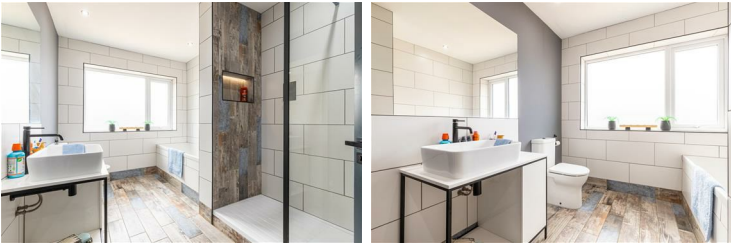
Conservatory 12'1" x 16'5" (3.70 x 5.01)



Bedroom two 14'9" x 11'5" (4.52 x 3.50 )



Family bathroom 7'8" x 11'5" (2.35 x 3.50)



Outside



Bedroom three 9'10" x 11'5" (3.01 x 3.50 )



Garage 20'10" x 9'6" (6.36 x 2.91 )

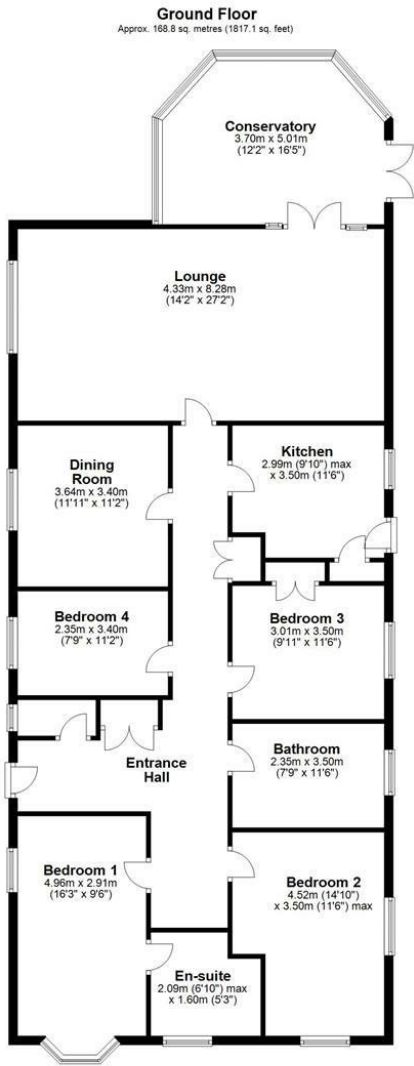


Garage 20'10" x 9'6" (6.36 x 2.91)

Bedroom four 7'8" x 11'1" (2.35 x 3.40 )



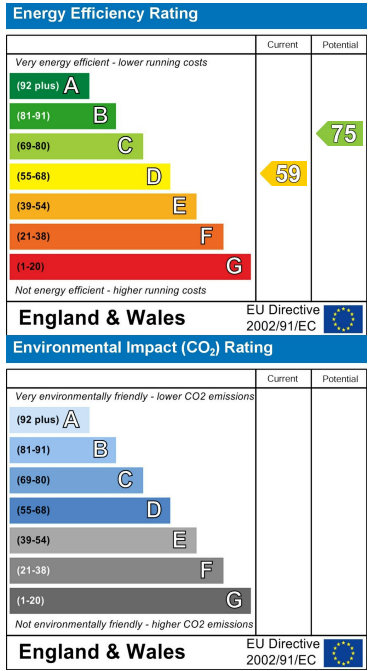
Floor Plan



Area Map



Energy Efficiency Graph



These particulars, whilst believed to be accurate are set out as a general outline only for guidance and do not constitute any part of an offer or contract. Intending purchasers should not rely on them as statements of representation of fact, but must satisfy themselves by inspection or otherwise as to their accuracy. No person in this firm's employment has the authority to make or give any representation or warranty in respect of the property.