



EA
BEN
CADE



3 Rye Walk, Hibaldstow, DN20 9FS

Offers In The Region Of £325,000

On a quiet estate with a private rear garden this Keigar built four bedroom detached family home is perfectly laid out for modern life. An open plan spacious living kitchen across the back of the house is a real wow space, alongside a lounge with inglenook fireplace, entrance hall, a utility room and a w.c. downstairs. Upstairs we have four good size bedrooms, with an en suite on the main bedroom and a modern family bathroom too. The finish through out is excellent and its presented well with neutral decor, outside the garden is a very good size for modern home, there's also a two car drive and detached garage. Viewings are available by appointment, please get in touch to book.

Entrance



Bedroom one 12'0" x 14'9" (3.68 x 4.50)



Downstairs W.C.

En-suite

Lounge 18'9" x 10'9" (5.74 x 3.28)



Kitchen dining room 18'3" x 23'11" (5.57 x 7.29)



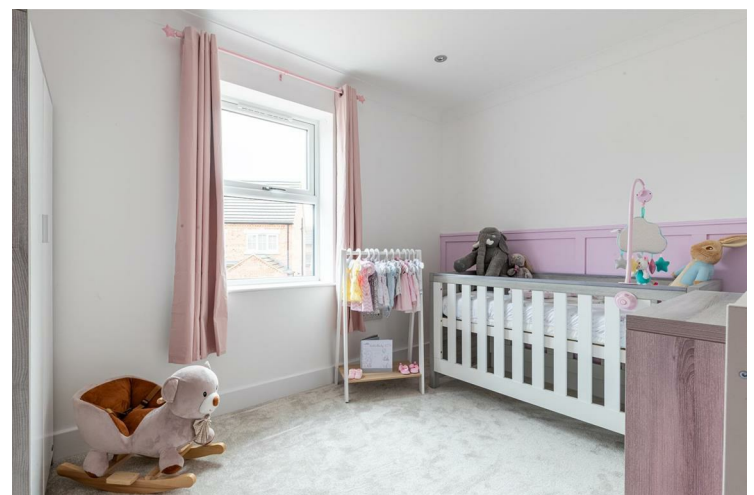
Bedroom two 13'5" x 12'9" (4.09 x 3.91)

Additional kitchen photos



Utility

Bedroom three 11'3" x 10'11" (3.45 x 3.33)



Office 10'4" x 6'0" (3.15 x 1.83)

Bedroom four 9'2" x 7'4" (2.80 x 2.26)

Landing

Bathroom



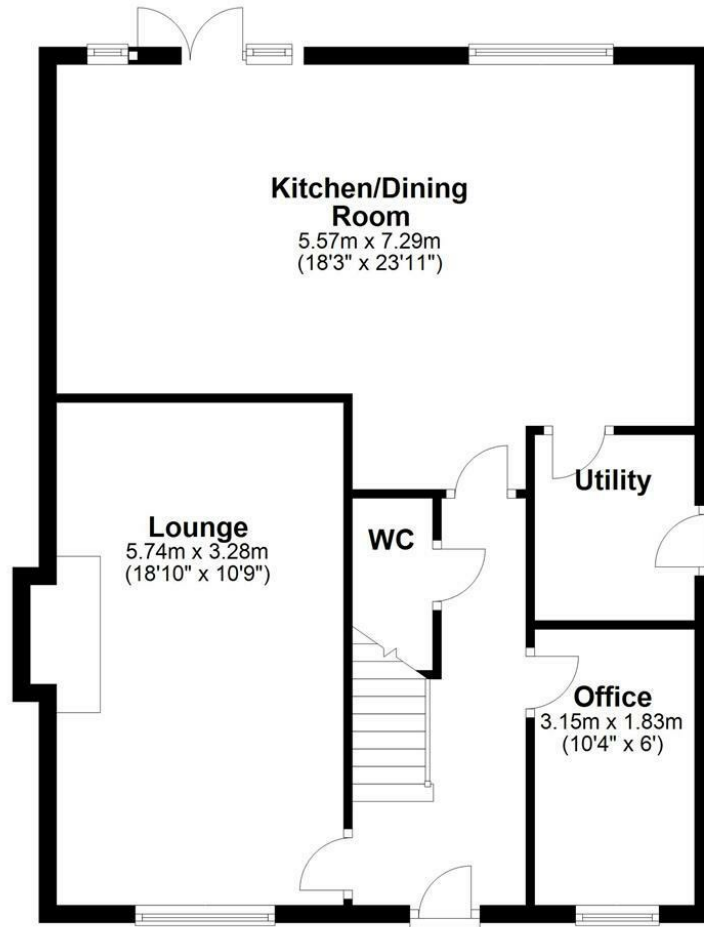
Garage 16'6" x 9'8" (5.03 x 2.95)

Outside



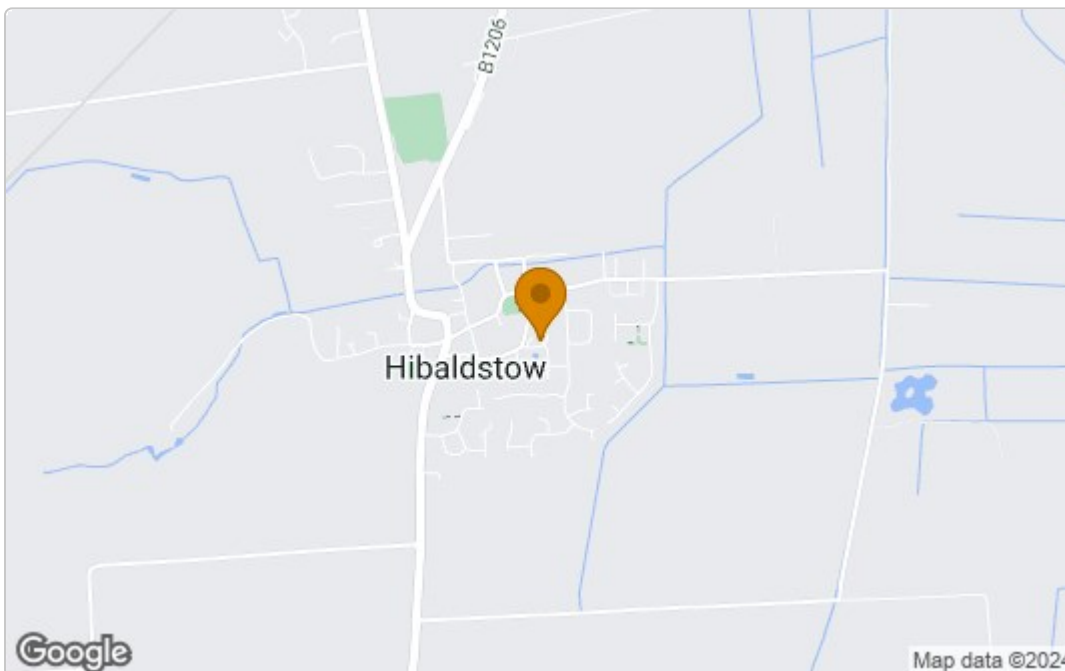
Ground Floor

Approx. 75.2 sq. metres (809.9 sq. feet)

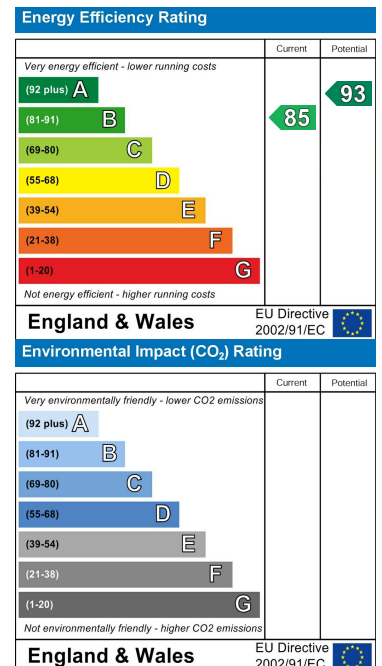


Total area: approx. 149.2 sq. metres (1605.5 sq. feet)

Area Map



Energy Efficiency Graph



These particulars, whilst believed to be accurate are set out as a general outline only for guidance and do not constitute any part of an offer or contract. Intending purchasers should not rely on them as statements of representation of fact, but must satisfy themselves by inspection or otherwise as to their accuracy. No person in this firm's employment has the authority to make or give any representation or warranty in respect of the property.