



32 School Lane, Scunthorpe, DN15 0AN

£325,000

Immaculate and well maintained throughout, sat on a lovely south facing plot with countryside to the back in the sought after Appleby village. The bungalow consists of a kitchen diner, two reception rooms, two double bedrooms, a useable loft space and a modern bathroom. Outside there is ample parking with a tandem length garage, then a beautiful rear garden with a summerhouse that the current owners use as a bar. Ready to move straight in to and available for viewings now please call to book your appointment.

Entrance

Lounge 15'4" x 11'10" (4.69 x 3.62)



Dining room 14'11" x 12'0" (4.57 x 3.67)



Kitchen diner 15'0" x 9'10" (4.59 x 3.02)



Bedroom one 11'5" x 10'1" (3.50 x 3.09)



Bedroom two 8'9" x 11'11" (2.69 x 3.65)



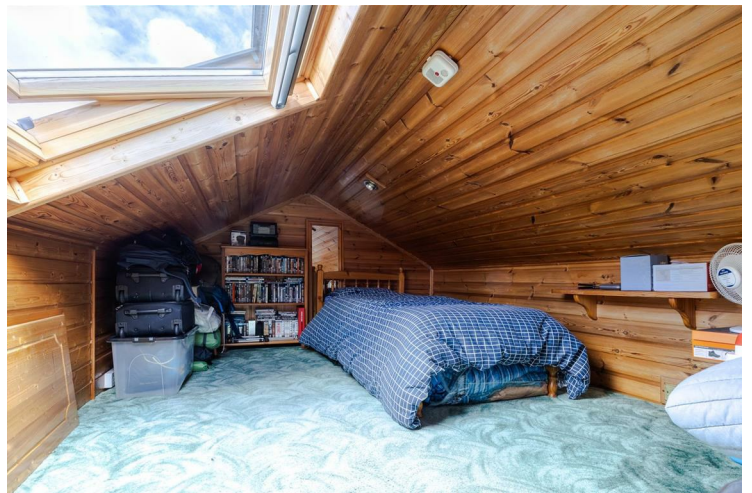
Hall

Bathroom 7'2" x 8'5" (2.20 x 2.58)



Garage 40'6" x 9'4" (12.35 x 2.86)

Loft space



Summer house



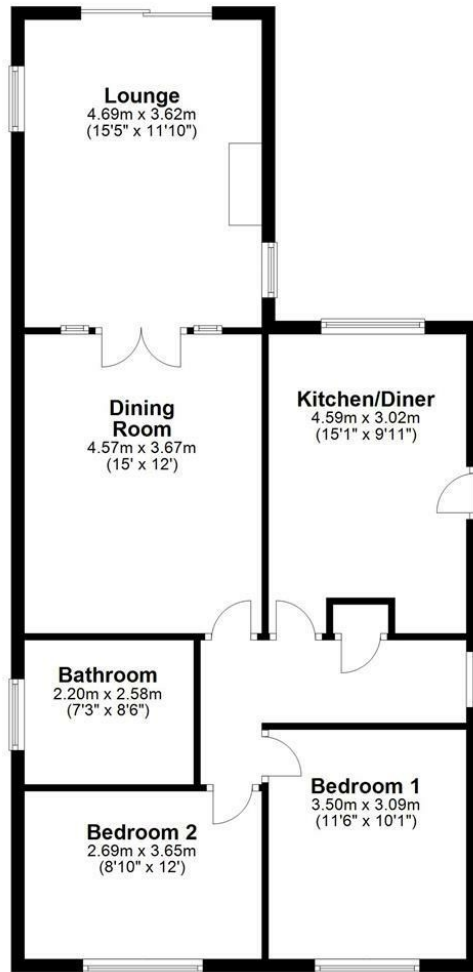
Outside



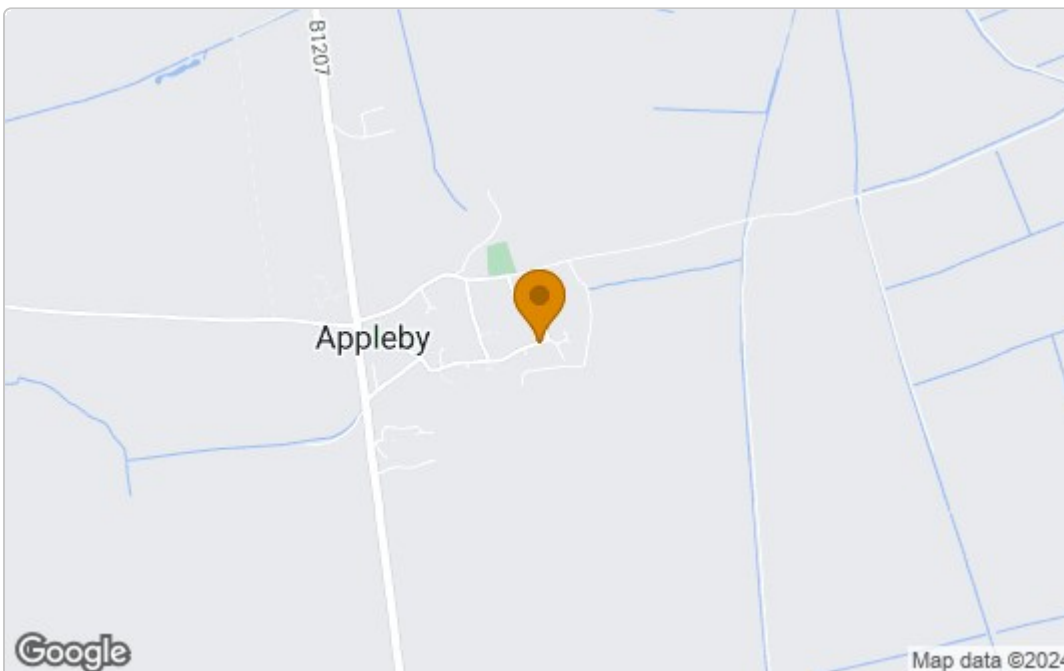
Floor Plan

Ground Floor

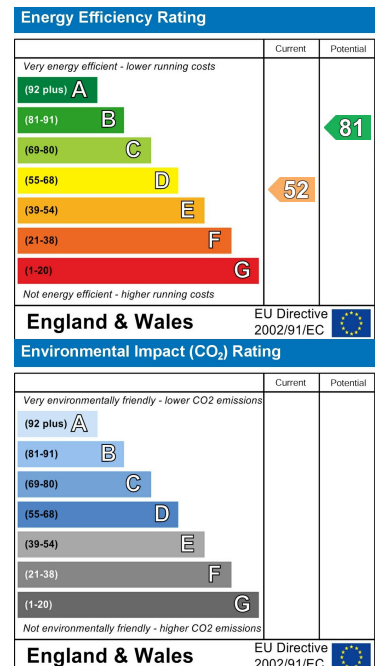
Approx. 82.6 sq. metres (889.0 sq. feet)



Area Map



Energy Efficiency Graph



These particulars, whilst believed to be accurate are set out as a general outline only for guidance and do not constitute any part of an offer or contract. Intending purchasers should not rely on them as statements of representation of fact, but must satisfy themselves by inspection or otherwise as to their accuracy. No person in this firm's employment has the authority to make or give any representation or warranty in respect of the property.