



2 Shelduck Way, Scunthorpe, DN16 3FY

£158,500

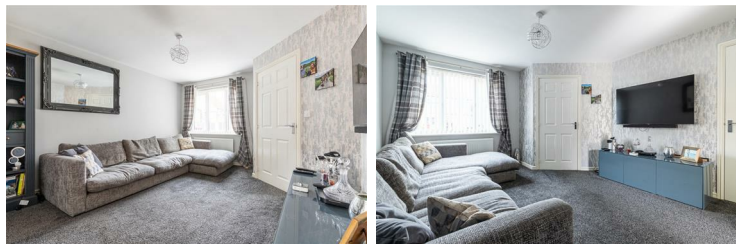
A three bedroom semi-detached home in the popular Lakeside area. Close to local amenities and in good school catchments, this home is ideal for first time buyers or a young family. The property consists of a lounge, kitchen diner and a downstairs W.C. Upstairs there are two double bedrooms, the master having an en suite and a good size single bedroom. There is also a family bathroom. Outside has a low maintenance rear garden with a decking area and the current owners have created home office. Available for viewings now please call the office to book your appointment.



Entrance hall

W.C.

Lounge 13'8" x 11'8" (4.17 x 3.58)



Kitchen diner 8'10" x 15'3" (2.71 x 4.67 )



Landing

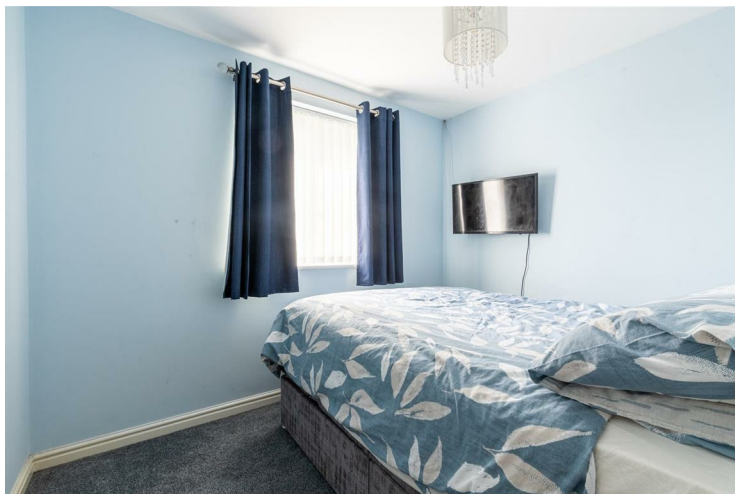
Bedroom one 9'5" x 9'1" (2.89 x 2.77 )



En suite 6'2" x 5'4" (1.89 x 1.65)



Bedroom two 7'6" x 9'1" (2.30 x 2.77)



Bedroom three 7'6" x 5'11" (2.30 x 1.82 )

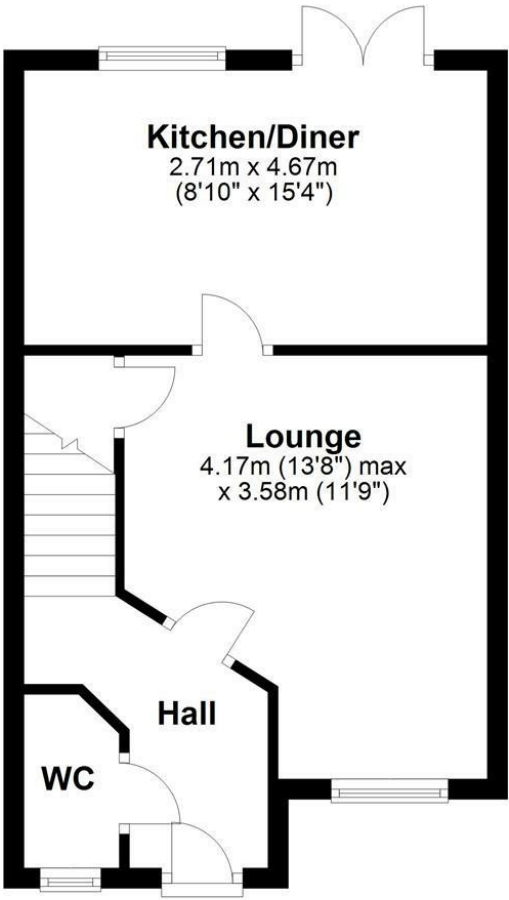
Bathroom 6'0" x 6'1" (1.83 x 1.86 )



Outside



Ground Floor  
Approx. 34.2 sq. metres (368.4 sq. feet)

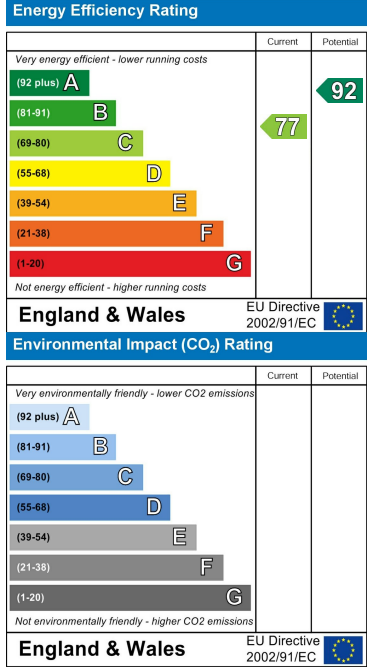


Total area: approx. 68.2 sq. metres (734.2 sq. feet)

Area Map



Energy Efficiency Graph



These particulars, whilst believed to be accurate are set out as a general outline only for guidance and do not constitute any part of an offer or contract. Intending purchasers should not rely on them as statements of representation of fact, but must satisfy themselves by inspection or otherwise as to their accuracy. No person in this firms employment has the authority to make or give any representation or warranty in respect of the property.