



**STRATOSPHERE TOWER,
LONDON E15**





A fantastic two bedroom sub penthouse apartment comprising of 1,203 sq ft living space and air conditioning. Residents benefit from access to a 24 hour concierge service, private residents' roof-top gymnasium and Wi-Fi lounge. Direct transport links servicing The City, Canary Wharf and the West End are readily accessible.

Handleless fitted units from designer Urban Myth, stone worktops, Smeg appliances. Kitchen, living room & hallway in quality wood strip laminate, bedrooms carpeted in a neutral colour tone. Décor with smooth finish to all walls & ceilings, painted in white emulsion and White satinwood finish. Bath with thermostatic rain shower mixer & glazed screen, contemporary ceramic tiling, large vanity mirror, bespoke cabinetry with built in storage & low voltage socket and two towel rails. Wardrobes to master bedroom with glass doors.

Early viewings are highly recommended.

- 2 Bedrooms
- 2 Bathrooms
- Penthouse
- Roof Terrace
- Residential gym
- Air conditioning
- 0.2 mile from Stratford Underground station
- Leasehold
- No onward chain
- EPC: B

PRICE

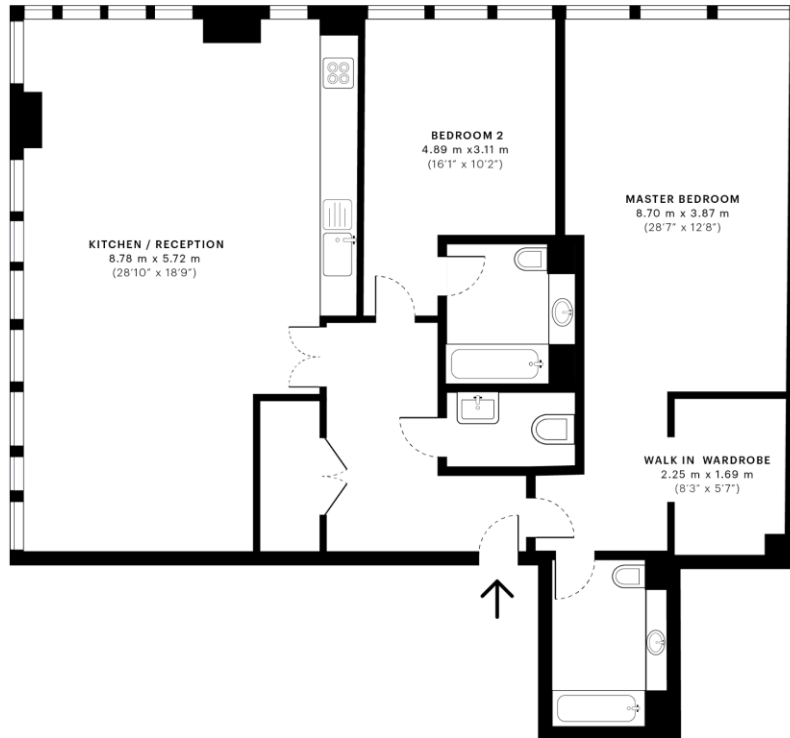
OIEO £900,000

GROSS INTERNAL AREA

1,203.2 sq ft (111.78 sq m)

LOCAL AUTHORITY

London Borough of Newham



 Restricted Head Height 0.00 Sqm / 0.00 Sqft	 External Structural Features 0.00 Sqm / 0.00 Sqft	Gross Internal Area (IPMS 3B) 111.78 Sqm / 1203.20 Sqft	Net Internal Area (IPMS 3C) 107.34 Sqm / 1155.41 Sqft
--	--	--	--

This floor plan was captured for JLL, Stratford on 04/06/2018 using 196,058,719 laser scan points, accurate to +/- 3cm and produced in accordance with the Royal Institute of Chartered Surveyors Property Measurement Standards, incorporating International Property Measurement Standard (IPMS). If you intend to rely on any measurement in a transaction you should perform your own checks.

Restricted Head Height = Limited use area under 1.5m. **External Structural Features** = Balconies, terraces or verandas or similar. **IPMS 3B** = gross internal area measured from the internal faces of external walls, including walls/obstructions and external structural features, excluding stairwell area above/below the ground floor. **IPMS 3C** = net internal area excluding internal walls/obstructions and stairwell area above/below the ground floor. **Total Internal Area** = IPMS 3B gross area + stairwell area above/below the ground floor of 0.



Unex Tower
5 Station Street
London
E15 1DA

These particulars are for general information only and do not constitute any part of an offer or contract. All statements contained therein are made without responsibility on the part of the vendors or lessors and are not to be relied upon as statement or representation of fact. Intending purchasers or lessees must satisfy themselves, by inspection, or otherwise, as to the correctness of each of the statements or dimensions contained in these particulars..