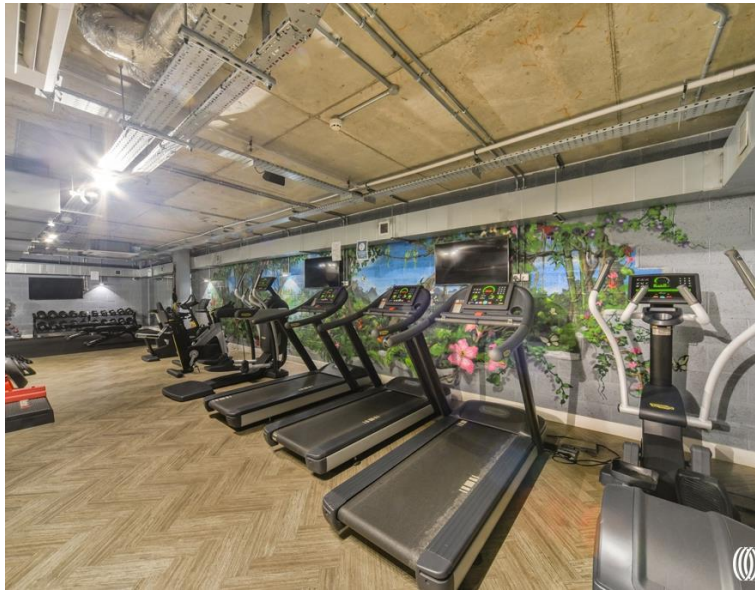


Rookwood Way, London E3

£650,000 Leasehold







Description

Nestled in the dynamic Hackney Wick area, this contemporary two bedroom, two-bathroom flat occupies a striking position within Glow Court, a premium residential development that exemplifies modern London living. The building's sleek architecture and professional management create an atmosphere of understated luxury, enhanced by the peace of mind that comes with concierge services.

The property itself celebrates natural light and outdoor living, with a south-facing balcony that captures sunshine throughout the day. The thoughtfully designed interior flows seamlessly between living spaces, while the modern two-bathroom layout provides both convenience and comfort for contemporary lifestyles. Premium finishes throughout reflect the development's commitment to quality, creating spaces that feel both sophisticated and welcoming.

Residents enjoy exclusive access to a well-equipped gym, eliminating the need for external memberships while promoting an active lifestyle within the comfort of home. The secure building entry and lift access ensure both safety and accessibility, while the professional concierge service adds an extra layer of convenience to daily life.

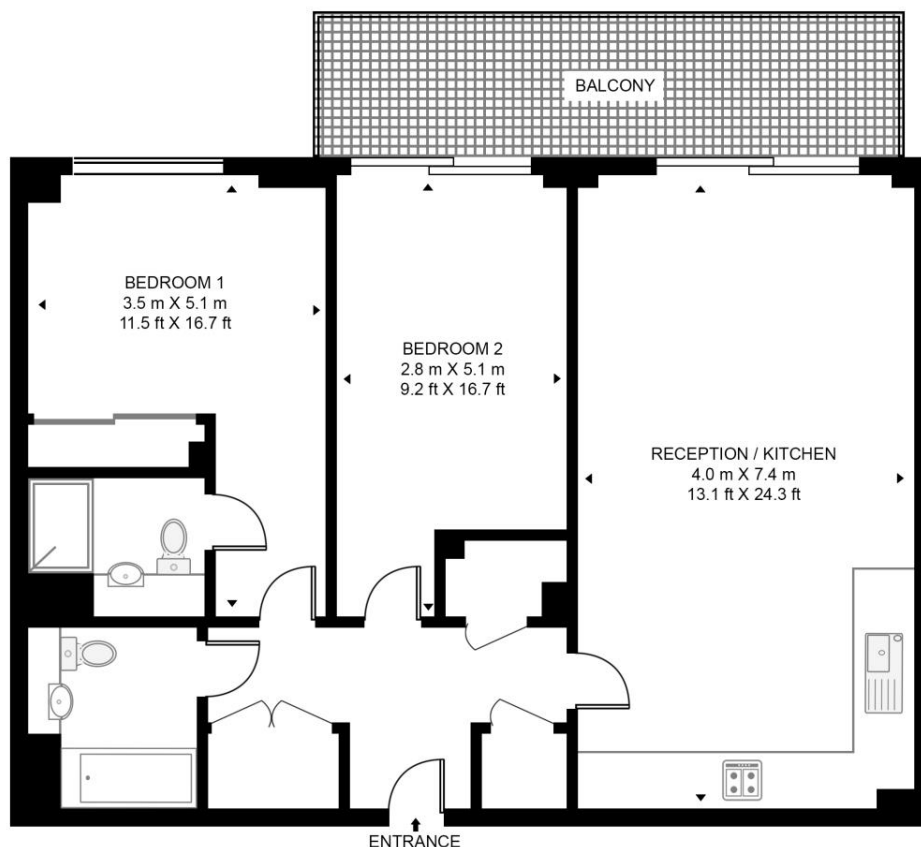
- South-facing balcony
- Resident gym access
- Concierge service
- Modern two-bathroom layout
- Premium development amenities
- Bright living spaces
- Contemporary finishes
- Secure building entry
- Lift access
- Energy efficient home

Floorplan

841 sq ft | 78 sq m

GLOW COURT, ROOKWOOD WAY, E3

APPROXIMATE GROSS INTERNAL FLOOR AREA 841 SQ.FT (78.1 SQ.M)



FOURTH FLOOR



This floor plan has been defined by the RICS Code of Measurement. This floor plan and all others are for approximate representative purposes only and upon usage is agreed to as such by the client.

WWW: hdvirtualart.com | TEL: 0203.974.1567 | EMAIL: info@hdvirtualart.com

Stratford
5 Station Street,
London E15 1DA
+4420 3147 1500
Lettingsstratford@eu.jll.com

Urban living, your way.

jll.co.uk/residential

© 2019 Jones Lang LaSalle IP, Inc. All rights reserved. All information contained herein is from sources deemed reliable; however, no representation or warranty is made to the accuracy thereof.

