



# Prospect Row, London E15

£580,000 Leasehold









## Description

Nestled within the prestigious Prospect East development in Stratford, this sophisticated two-bedroom apartment exemplifies contemporary London living at its finest. The development's striking modern architecture creates an impressive residential community that has quickly become one of the area's most desirable addresses.

Upon entry, the thoughtfully designed entrance hall immediately impresses with four generous storage cupboards, setting the tone for the apartment's practical luxury throughout. The accommodation flows seamlessly, with two spacious double bedrooms each benefiting from built-in storage solutions, while the master bedroom enjoys the added convenience of a sleek en suite bathroom. A separate modern family bathroom, finished with contemporary tiling, serves the property beautifully.

The heart of this home lies in its exceptional living quarters, where an ultra-modern fully integrated kitchen equipped with premium appliances flows effortlessly into a generous living area. This open-plan design maximises both space and natural light, creating an ideal environment for both relaxation and entertaining.

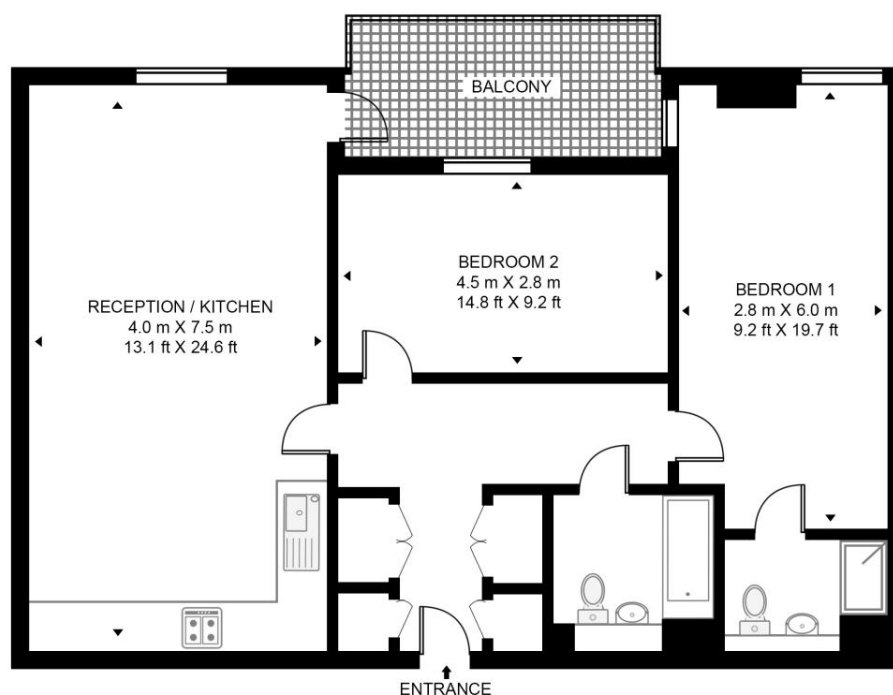
- Two bedrooms
- Two bathrooms
- Fully integrated kitchen
- 6th Floor
- Balcony Secure entry system
- Approx. 865 sq. ft (80.4 sq. m)
- EPC Rating B

# Floorplan

865 sq ft | 80 sq m

## MOGUL BUILDING, PROSPECT ROW

APPROXIMATE GROSS INTERNAL FLOOR AREA 865 SQ.FT (80.4 SQ.M)



SIXTH FLOOR



This floor plan has been defined by the RICS Code of Measurement. This floor plan and all others are for approximate representative purposes only and upon usage is agreed to as such by the client.

WWW: [hdvirtualart.com](http://hdvirtualart.com) | TEL: 0203.974.1567 | EMAIL: [info@hdvirtualart.com](mailto:info@hdvirtualart.com)

Stratford  
5 Station Street,  
London E15 1DA  
+4420 3147 1500  
[Lettingsstratford@eu.jll.com](mailto:Lettingsstratford@eu.jll.com)

*Urban living, your way.*

[jll.co.uk/residential](http://jll.co.uk/residential)

© 2019 Jones Lang LaSalle IP, Inc. All rights reserved. All information contained herein is from sources deemed reliable; however, no representation or warranty is made to the accuracy thereof.

