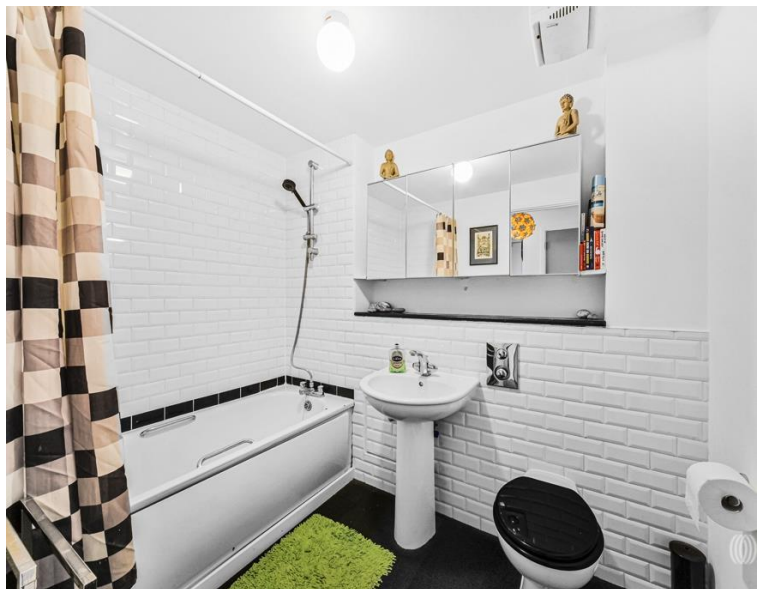


# Cam Road, London E15

£415,000 Leasehold











## Description

Positioned in the heart of Stratford's dynamic landscape, this exceptional two-bedroom apartment within the prestigious Burford Wharf development offers an unparalleled living experience with breathtaking south-facing views across to Canary Wharf's iconic skyline. The elevated position ensures the apartment is flooded with natural light throughout the day while providing a spectacular backdrop for modern city living.

The thoughtfully designed interior features a spacious living area that seamlessly flows into a fully fitted kitchen, creating an ideal space for both relaxation and entertaining. Two generously proportioned double bedrooms provide comfortable accommodation, complemented by a well-appointed family bathroom and clever storage solutions integrated throughout the property.

Residents of Burford Wharf enjoy the luxury of a daytime concierge service, secure entrance systems, and practical amenities such as dedicated bike storage. These premium facilities enhance the convenience and security of apartment living while maintaining the development's sophisticated character.

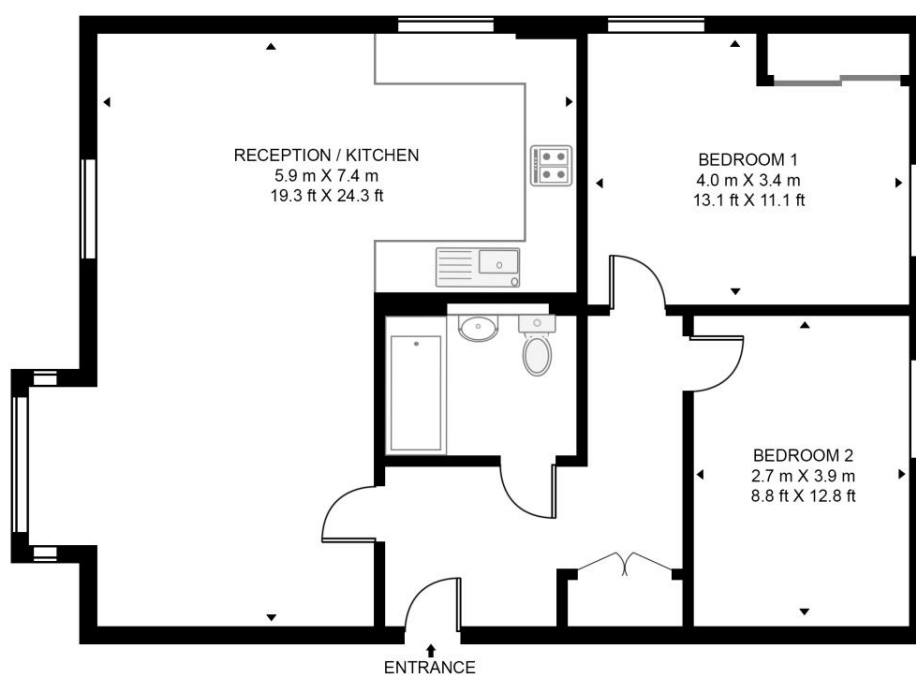
- Two bedrooms
- One bathroom
- 14th Floor
- Secure development
- Daytime concierge
- Fantastic views
- 0.3 mile walk to Stratford Station
- Approx. 813 sq. ft (75.5 sq. m)
- EPC Rating: C

# Floorplan

813 sq ft | 76 sq m

## BURFORD WHARF, CAM STREET

APPROXIMATE GROSS INTERNAL FLOOR 813 SQ.FT (75.5 SQ.M)



### FOURTEENTH FLOOR



This floor plan has been defined by the RICS Code of Measurement. This floor plan and all others are for approximate representative purposes only and upon usage is agreed to as such by the client.  
WWW: [hdvirtualart.com](http://hdvirtualart.com) | TEL: 0203.974.1567 | EMAIL: [info@hdvirtualart.com](mailto:info@hdvirtualart.com)

Stratford  
5 Station Street,  
London E15 1DA  
+4420 3147 1500  
[Lettingsstratford@eu.jll.com](mailto:Lettingsstratford@eu.jll.com)

*Urban living, your way.*

[jll.co.uk/residential](http://jll.co.uk/residential)

© 2019 Jones Lang LaSalle IP, Inc. All rights reserved. All information contained herein is from sources deemed reliable; however, no representation or warranty is made to the accuracy thereof.

