



Glasshouse Gardens, London E20

Offers In Excess Of £475,000 Leasehold







Description

Situated within the highly sought-after Glasshouse Gardens development in Stratford, this contemporary one-bedroom apartment epitomises modern urban living with its sophisticated amenities and prime location. The development's distinctive character is enhanced by its 24-hour concierge service, private residents' gym, and meticulously maintained communal gardens that create a serene oasis within this vibrant East London locale.

The apartment itself showcases thoughtful design throughout, featuring a fully integrated ultra-modern kitchen that seamlessly blends functionality with contemporary style. The bright and spacious living area flows effortlessly onto a private south-easterly facing balcony, offering delightful views over the impeccably maintained communal areas while capturing excellent natural light throughout the day. The generous double bedroom benefits from built-in storage solutions, maximising space and maintaining the clean, uncluttered aesthetic, while the three-piece tiled bathroom suite provides a fresh, modern finish. Additional practical storage is provided by a dedicated cupboard, ensuring every aspect of comfortable living has been considered.

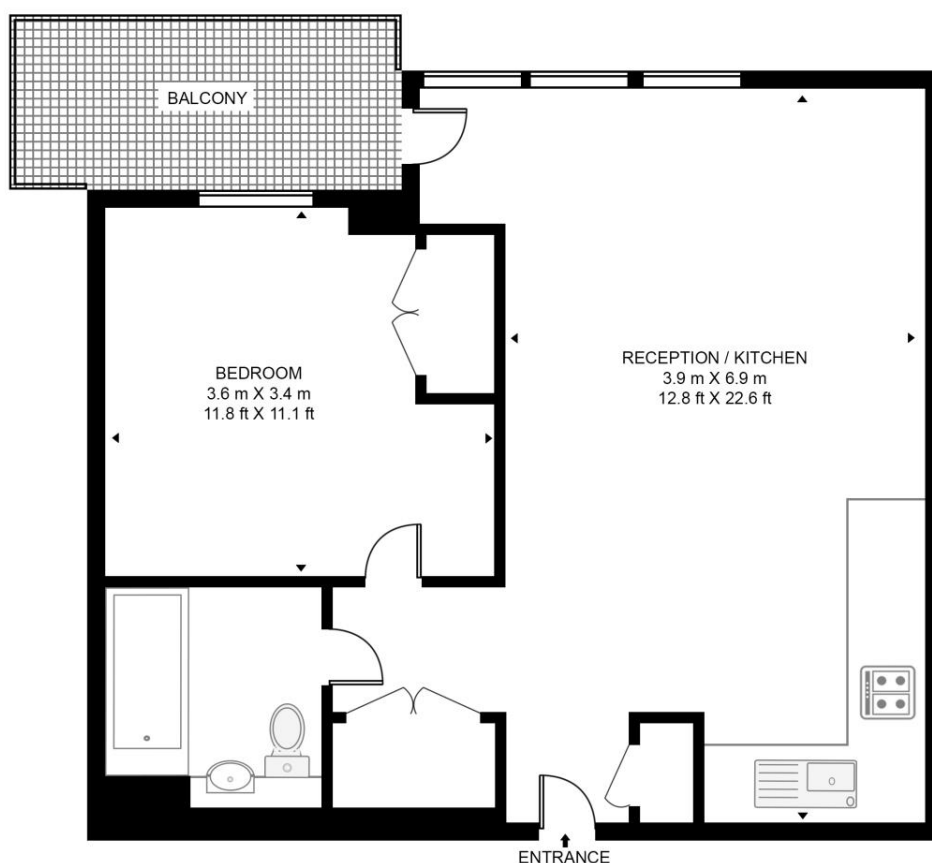
- One Bedroom
- One Bathroom
- Second Floor
- 24hr Concierge
- Residential Gym
- Private Balcony
- 0.3 mile to Stratford underground station
- Olympic Park
- East Village
- Approx. 551 sq ft (51.2 sq m)

Floorplan

538 sq ft | 50 sq m

CASSIA POINT, GLASSHOUSE GARDENS

APPROXIMATE GROSS INTERNAL FLOOR AREA 551 SQ.FT (51.2 SQ.M)



ENTRANCE

SECOND FLOOR



This floor plan has been defined by the RICS Code of Measurement. This floor plan and all others are for approximate representative purposes only and upon usage is agreed to as such by the client.

WWW: hdvirtualart.com | TEL: 0203.974.1567 | EMAIL: info@hdvirtualart.com

Stratford
5 Station Street,
London E15 1DA
+4420 3147 1500
Lettingsstratford@eu.jll.com

Urban living, your way.

jll.co.uk/residential

© 2019 Jones Lang LaSalle IP, Inc. All rights reserved. All information contained herein is from sources deemed reliable; however, no representation or warranty is made to the accuracy thereof.

