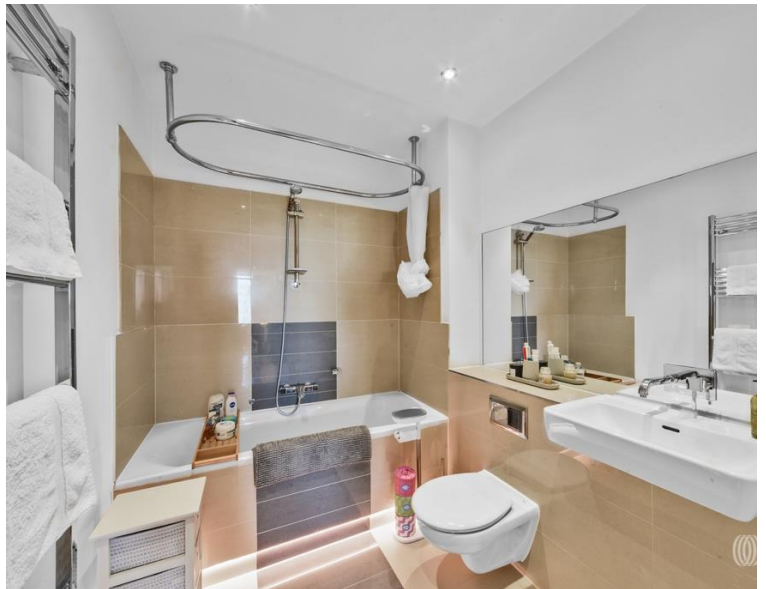


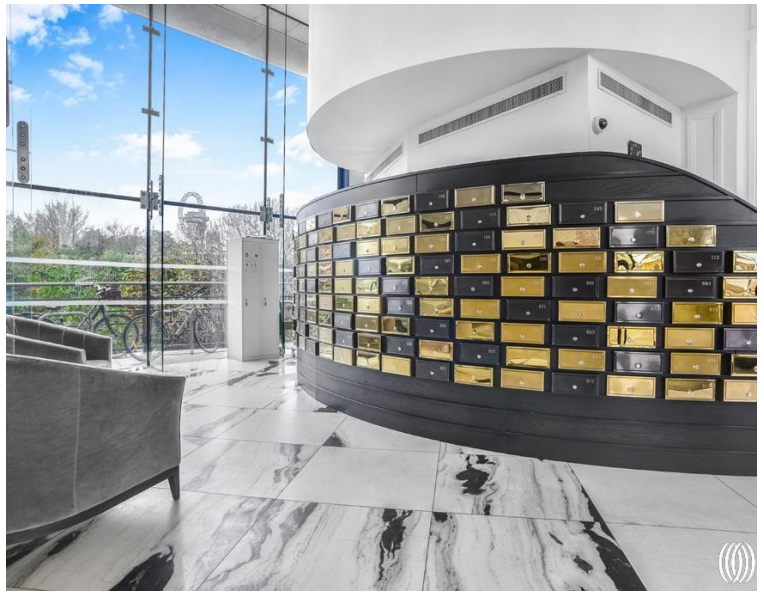


High Street, London E15

£500,000 Leasehold







Description

Situated in the heart of Stratford, River Heights represents contemporary urban living at its finest. This ultra-modern two-bedroom, two-bathroom apartment offers sophisticated city living within one of East London's most dynamic neighbourhoods. The development's striking architecture and premium amenities create an exceptional residential experience for discerning buyers seeking both comfort and convenience.

The apartment showcases contemporary design throughout, featuring a fully integrated kitchen that seamlessly blends form and function. Two private balconies extend the living space outdoors, offering elevated views across the surrounding area and providing perfect spots for morning coffee or evening relaxation. The modern specification continues throughout both bathrooms, ensuring every detail reflects the property's premium standard.

River Heights residents benefit from an exceptional array of amenities including 24-hour concierge service, ensuring security and convenience around the clock. The on-site residents' gym provides fitness facilities without leaving home, while allocated, underground parking is included for those requiring secure vehicle storage.

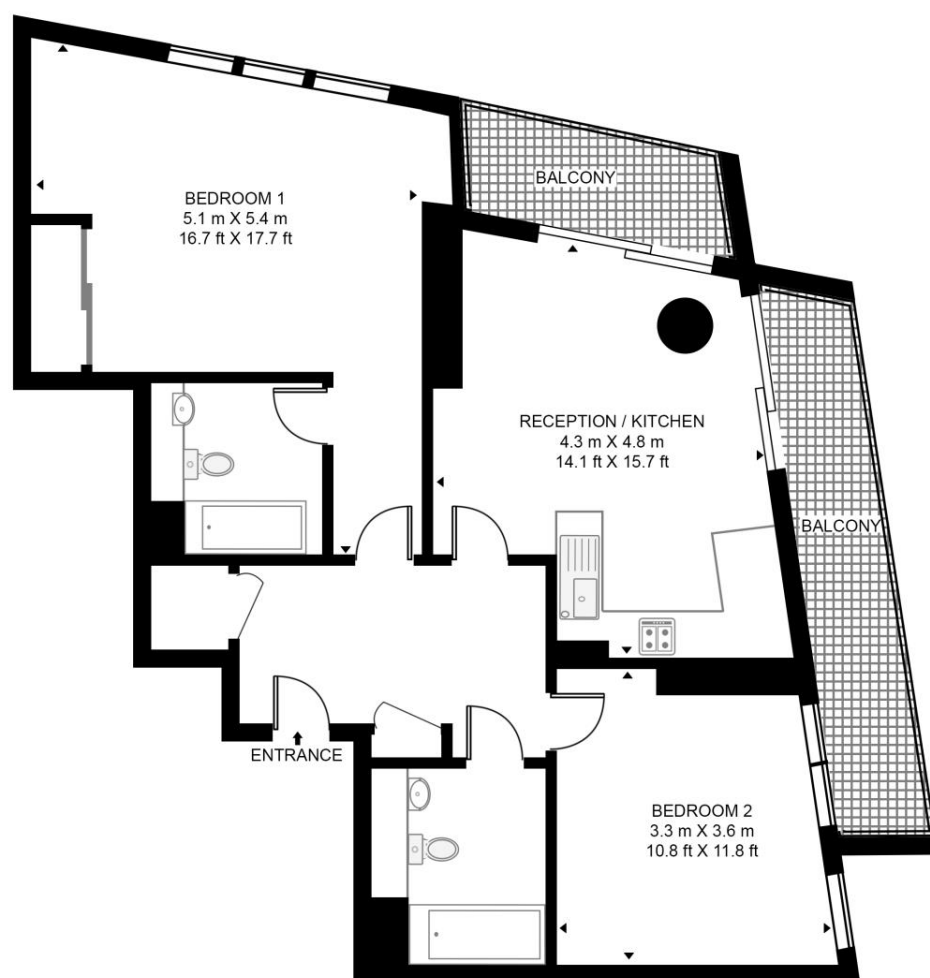
- Two double bedrooms
- Two bathrooms (one en-suite)
- Two private balconies
- 9th floor
- 24-hour concierge service
- Residents' gym access
- Ultra modern throughout
- Fully integrated kitchen
- Allocated, underground parking included
- Great elevated views

Floorplan

756 sq ft | 70 sq m

RIVER HEIGHTS, HIGH STREETS

APPROXIMATE GROSS INTERNAL FLOOR AREA 756 SQ.FT (70.2 SQ.M)



NINTH FLOOR



This floor plan has been defined by the RICS Code of Measurement. This floor plan and all others are for approximate representative purposes only and upon usage is agreed to as such by the client.

WWW: hdvirtualart.com | TEL: 0203.974.1567 | EMAIL: info@hdvirtualart.com

Stratford
5 Station Street,
London E15 1DA
+4420 3147 1500
Lettingsstratford@eu.jll.com

Urban living, your way.

jll.co.uk/residential

© 2019 Jones Lang LaSalle IP, Inc. All rights reserved. All information contained herein is from sources deemed reliable; however, no representation or warranty is made to the accuracy thereof.

