



# Peloton Avenue, London E20

£800,000 Leasehold









## Description

Situated in the heart of Queen Elizabeth Olympic Park's thriving residential quarter, this contemporary dual-aspect three-bedroom apartment occupies a prime position within a well-maintained modern development. The property benefits from elevated courtyard views and abundant natural light, creating a bright and airy living environment that epitomises modern London living. The apartment features a thoughtfully designed layout with three bedrooms overlooking the peaceful internal courtyard and two bathrooms, complemented by a private west facing balcony. The elevated position ensures excellent natural light throughout the day while maintaining a sense of privacy and tranquillity within this vibrant urban setting.

Residents enjoy access to beautifully maintained communal gardens and an internal residents-only courtyard, providing a welcome green retreat within the development. The contemporary design and quality construction reflect the high standards of modern residential development that characterise this area of East London.

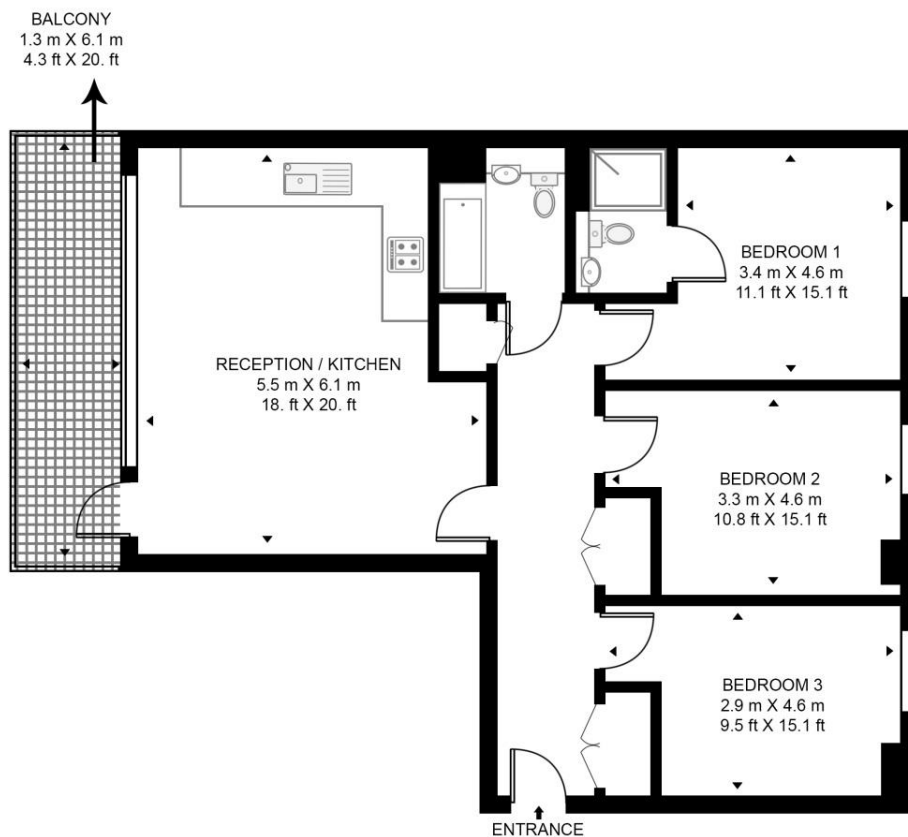
- Bedrooms facing peaceful internal courtyard
- Private sunny west facing balcony
- Contemporary development design
- Well maintained communal gardens
- Stratford transport hub proximity
- Queen Elizabeth Olympic Park
- Westfield Stratford City access
- Velodrome nearby location
- Modern apartment living

# Floorplan

1,044 sq ft | 97 sq m

## HYETT COURT

APPROXIMATE GROSS INTERNAL FLOOR AREA 1044 SQ.FT (97 SQ.M)



## THIRD FLOOR



This floor plan has been defined by the RICS Code of Measurement. This floor plan and all others are for approximate representative purposes only and upon usage is agreed to as such by the client.  
WWW: [hdvirtualart.com](http://hdvirtualart.com) | TEL: 0203.974.1567 | EMAIL: [info@hdvirtualart.com](mailto:info@hdvirtualart.com)

Stratford  
5 Station Street,  
London E15 1DA  
+4420 3147 1500  
[Lettingsstratford@eu.jll.com](mailto:Lettingsstratford@eu.jll.com)

*Urban living, your way.*

[jll.co.uk/residential](http://jll.co.uk/residential)

© 2019 Jones Lang LaSalle IP, Inc. All rights reserved. All information contained herein is from sources deemed reliable; however, no representation or warranty is made to the accuracy thereof.

