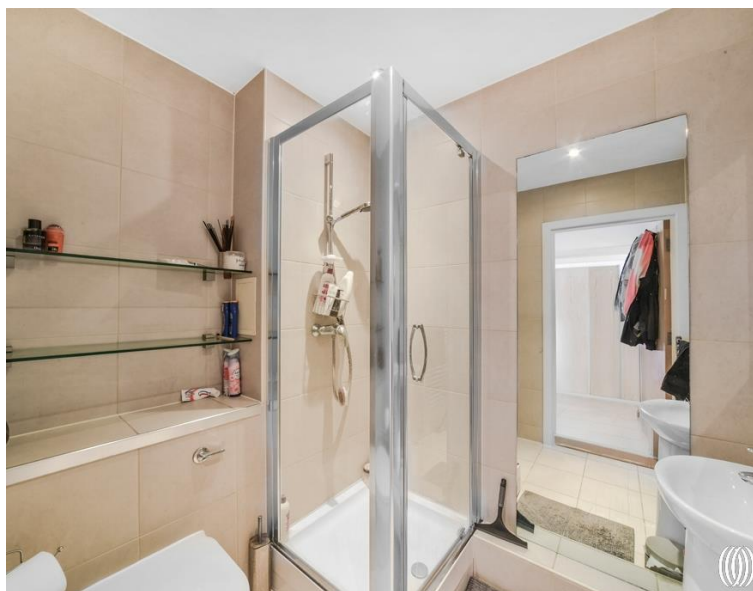


# Angel Lane, London E15

£800,000 Leasehold











## Description

JLL are proud to offer a very rare opportunity to purchase this fully air-conditioned two double bedroom, two bathroom split level penthouse apartment equipped with a private underground parking space located within The Stratford Eye development, where residents are a mere 500ft walk to Stratford Station.

This spectacular one of a kind apartment is located on the 18th & 19th floor and offers over 1250 sq. ft of internal living space with only what can be described as breath taking views over Stratford City and towards the City Of London, where landmarks such as The Shard are clear as day.

Full air-conditioned throughout, the property comprises entrance hall leading to fully tiled modern family bathroom and large second double bedroom. Moving onto the reception/kitchen area with close to 500sq. ft of living space you are greeted by a large storage cupboard, open plan living area with double height floor-to-ceiling windows, fully integrated kitchen with pantry and a large balcony with uninterrupted views from North to South.

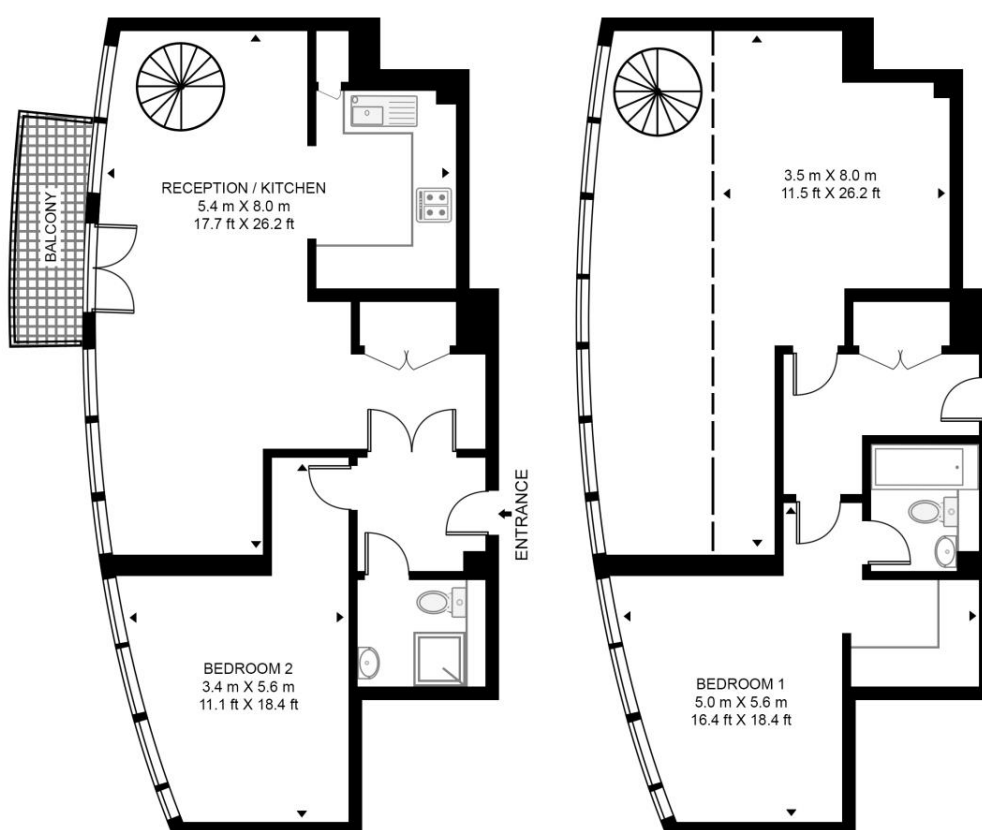
- Penthouse
- Two bedrooms
- Two bathrooms (one en-suite)
- Caretaker
- Balcony with breath taking views
- Split level 18th & 19th floor
- Air-conditioning throughout
- Underground secure parking space
- Approx. 1268 sq. ft (117.8 sq. m)
- EPC Rating B

# Floorplan

1,268 sq ft | 118 sq m

## STRATFORD EYE, 1 ANGEL LANE

APPROXIMATE GROSS INTERNAL FLOOR AREA 1268 SQ.FT (117.8 SQ.M)



This floor plan has been defined by the RICS Code of Measurement. This floor plan and all others are for approximate representative purposes only and upon usage is agreed to as such by the client.

WWW: [hdvirtualart.com](http://hdvirtualart.com) | TEL: 0203.974.1567 | EMAIL: [info@hdvirtualart.com](mailto:info@hdvirtualart.com)

Stratford  
5 Station Street,  
London E15 1DA  
+4420 3147 1500  
[Lettingsstratford@eu.jll.com](mailto:Lettingsstratford@eu.jll.com)

*Urban living, your way.*

[jll.co.uk/residential](http://jll.co.uk/residential)

© 2019 Jones Lang LaSalle IP, Inc. All rights reserved. All information contained herein is from sources deemed reliable; however, no representation or warranty is made to the accuracy thereof.

