



High Street, London E15

£475,000 Leasehold







Description

This exceptional 19th-floor, 2-bedroom, 2-bathroom apartment showcases elegant design with floor-to-ceiling windows flooding the space with natural light. The flowing open-plan living area extends to a private balcony with picturesque canal and Olympic Village views. The contemporary kitchen features a stylish central island and premium integrated appliances, creating both a functional workspace and social gathering point. The generous master bedroom includes built-in storage, while a sophisticated bathroom completes this stylish residence.

In addition to a secure underground parking space, the building provides a 24-hour concierge service for ultimate convenience and peace of mind.

Everyday amenities are conveniently located within easy reach, including a large supermarket for daily essentials and the impressive Westfield Stratford City offering extensive retail, dining, and entertainment options. For outdoor recreation, the magnificent Queen Elizabeth Olympic Park is less than 10 minutes away, providing beautiful green spaces perfect for leisure activities and relaxation.

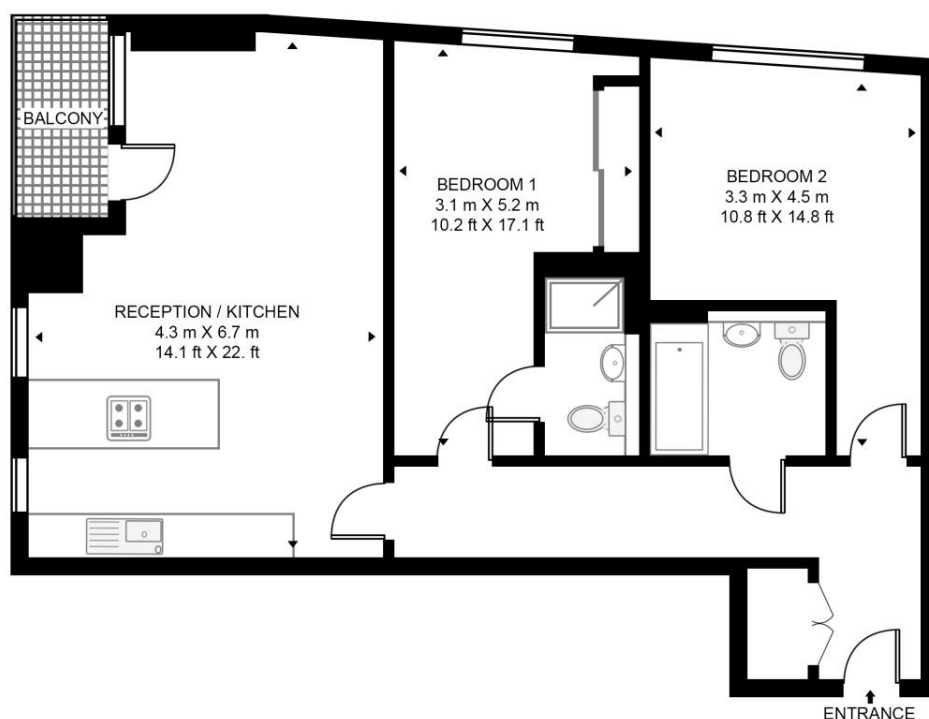
- Two bedrooms
- Two bathrooms (one en-suite)
- Balcony and communal garden
- 19th Floor (lift access)
- Underground parking
- SMEG appliances
- Canal views
- Dual aspect
- Approx. 733 sq. ft (68.1 sq. m)
- EPC Rating B

Floorplan

733 sq ft | 68 sq m

GEORGE HUDSON TOWER, HIGH STREET

APPROXIMATE GROSS INTERNAL FLOOR AREA 733 SQ.FT (68.1 SQ.M)



NINETEENTH FLOOR



HDVA

This floor plan has been defined by the RICS Code of Measurement. This floor plan and all others are for approximate representative purposes only and upon usage is agreed to as such by the client.

WWW: hdvirtualart.com | TEL: 0203.974.1567 | EMAIL: info@hdvirtualart.com

Stratford
5 Station Street,
London E15 1DA
+4420 3147 1500
Lettingsstratford@eu.jll.com

Urban living, your way.

jll.co.uk/residential

© 2019 Jones Lang LaSalle IP, Inc. All rights reserved. All information contained herein is from sources deemed reliable; however, no representation or warranty is made to the accuracy thereof.

